

Analog Electronic Circuits
Department of Electrical and Computer Engineering
Seoul National University

2014 Fall

D. K. Jeong

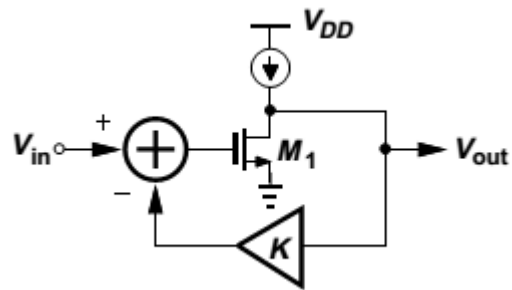
Quiz #4

November 7, 2014

Student ID number :

Student name :

1. Consider the feedback system shown in Fig.1 where the common-source stage serves as the feedforward network. Assume $\mu_n C_{ox}$ may vary by $\pm 10\%$ and λ by $\pm 20\%$. What is the minimum loop gain necessary to guarantee that the closed-loop gain varies by less than $\pm 5\%$?



[Fig. 1]