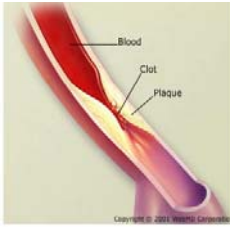


Chronic Total Occlusion (CTO) Treatment Device



Jun-Cheol Yeo, Min-Hyeng Kim, and Yan Jun
 (School of Mechanical and Aerospace Engineering, Seoul National University)

Concept & Objectives



The surgery success rate for ordinary cardiovascular disease : 95%

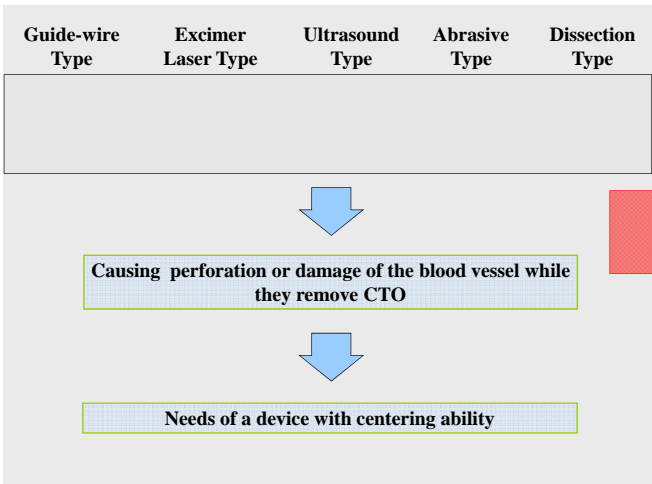
However, in the case of CTO (Chronic Total Occlusion) : **less than 60%**

Objectives :

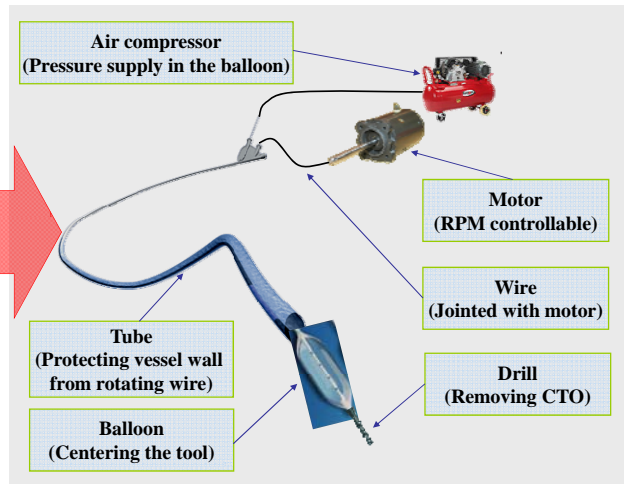
To develop a safe and effective CTO treatment device with centering ability

Conceptual Design

• The Problems of Conventional CTO Treatment Devices



• The Conceptual Design of CTO treatment Device

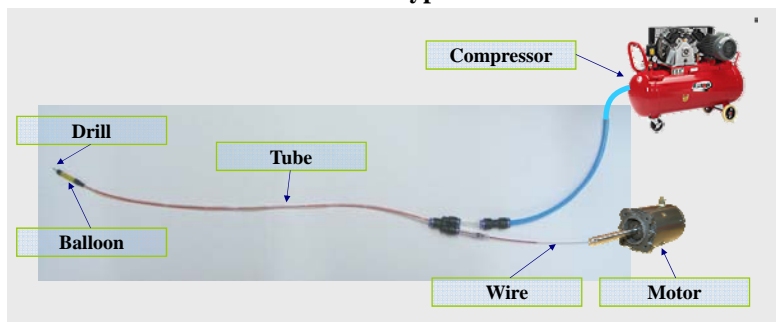


Fabrications

Tube Fabrication	Balloon Fabrication	Drill Fabrication

Prototype & Mechanism

• Prototype



• Operating Mechanism

