

MEMS 공정 및 설계
CADENCE 교육 자료

이상민/김남국

2008.3.26

Seoul National University
School of Electrical Engineering & Computer Science
Nano/Micro Systems & Controls Lab.

□ 목 차

- Xmanager Enterprise 2.0
 - 다운로드 및 설치
 - 프로그램 설정
- CADENCE (Layout) 실행
- CADENCE - Library, Cellview 생성
- Virtuoso : Layout 편집 tool
- 명령어 설명
 - Grid Control
 - Create 명령
 - Window 명령
 - Edit 명령
 - Design 명령
- Gds 파일 변환



□ Xmanager Enterprise 2.0 설치

- 프로그램 사양 (UNIX 환경)

- 지원 OS : Windows95, 98, ME, NT, 2000, XP
- 구매처 : 넷사랑 (http://www.netsarang.co.kr)
- 일련번호: 041005-156832-000926
- 패키지구성 : Xmanager 3D, Xshell, Xftp, Xlpd



- 프로그램 다운로드

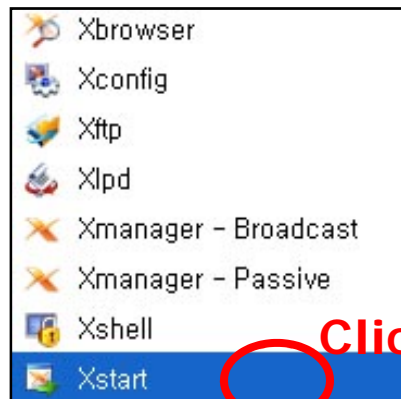
- 정보화포털 (it4u)
 - > 이용자 서비스
 - > 캠퍼스라이센스SW
 - > 다운로드



□ Xmanager Enterprise 2.0 프로그램 설정

- 프로그램 설정

- 시작 > 프로그램 > Xmanager Enterprise > Xstart



Click!

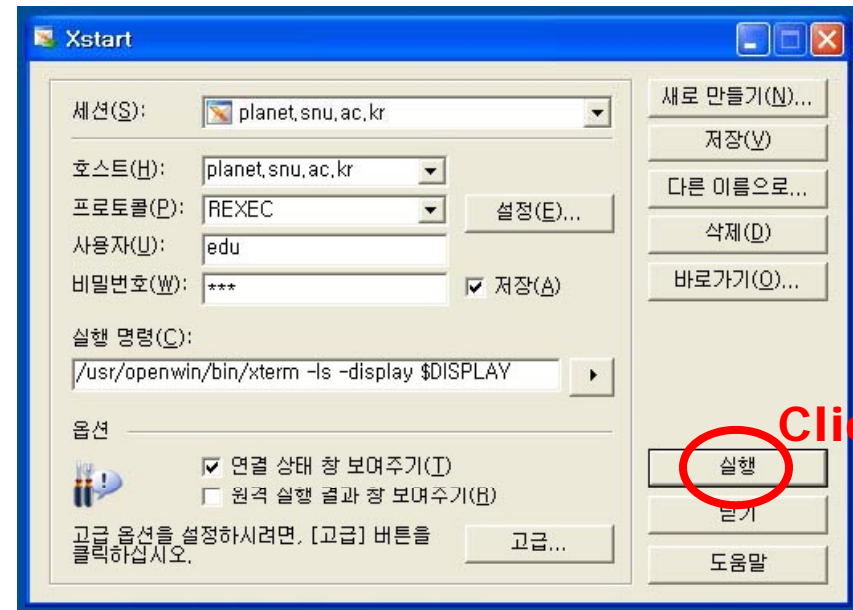
- 호스트 : planet.snu.ac.kr

- 프로토콜 : REXEC

- 사용자 : edu

- 비밀번호 : edu

- 실행명령 : /usr/openwin/bin/xterm -ls -display \$DISPLAY

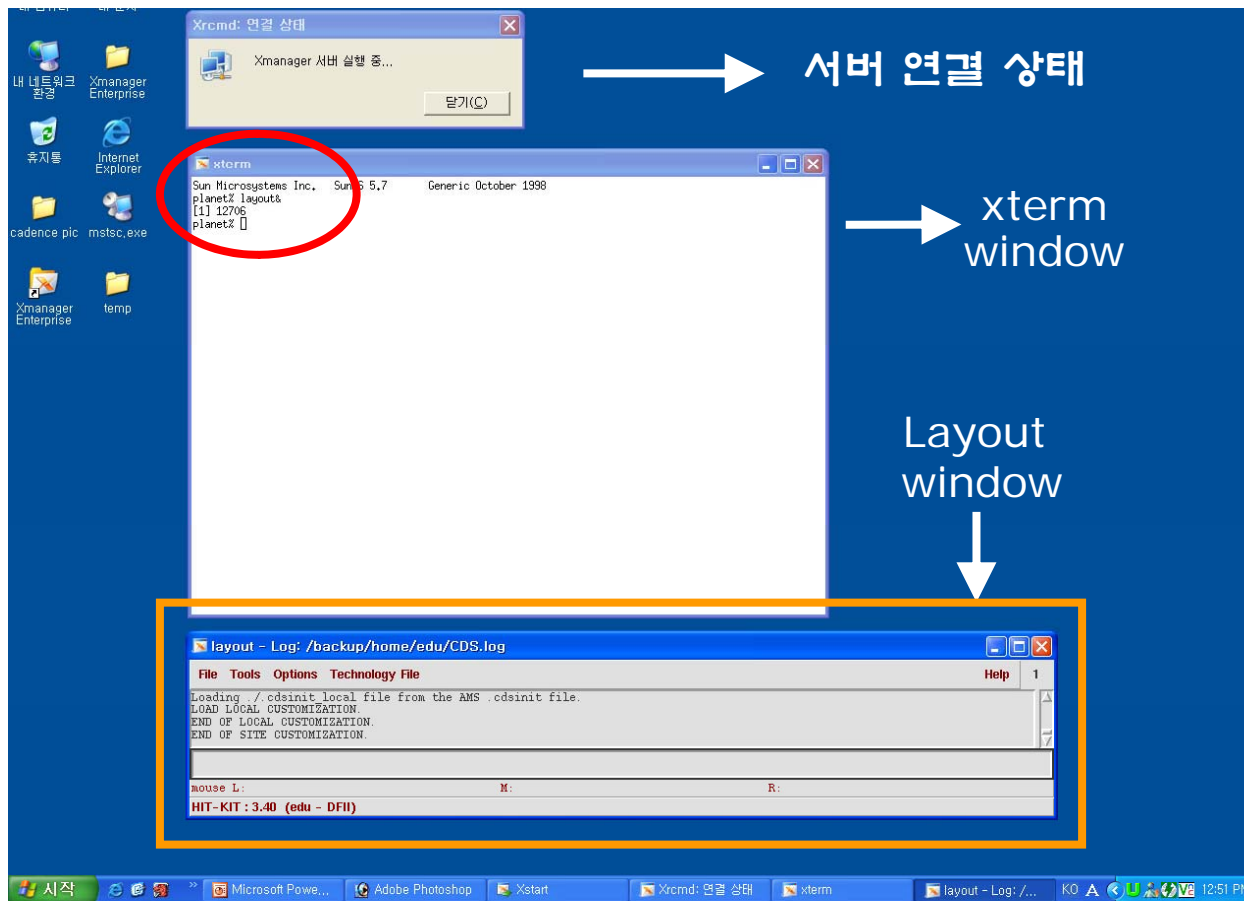


Click!



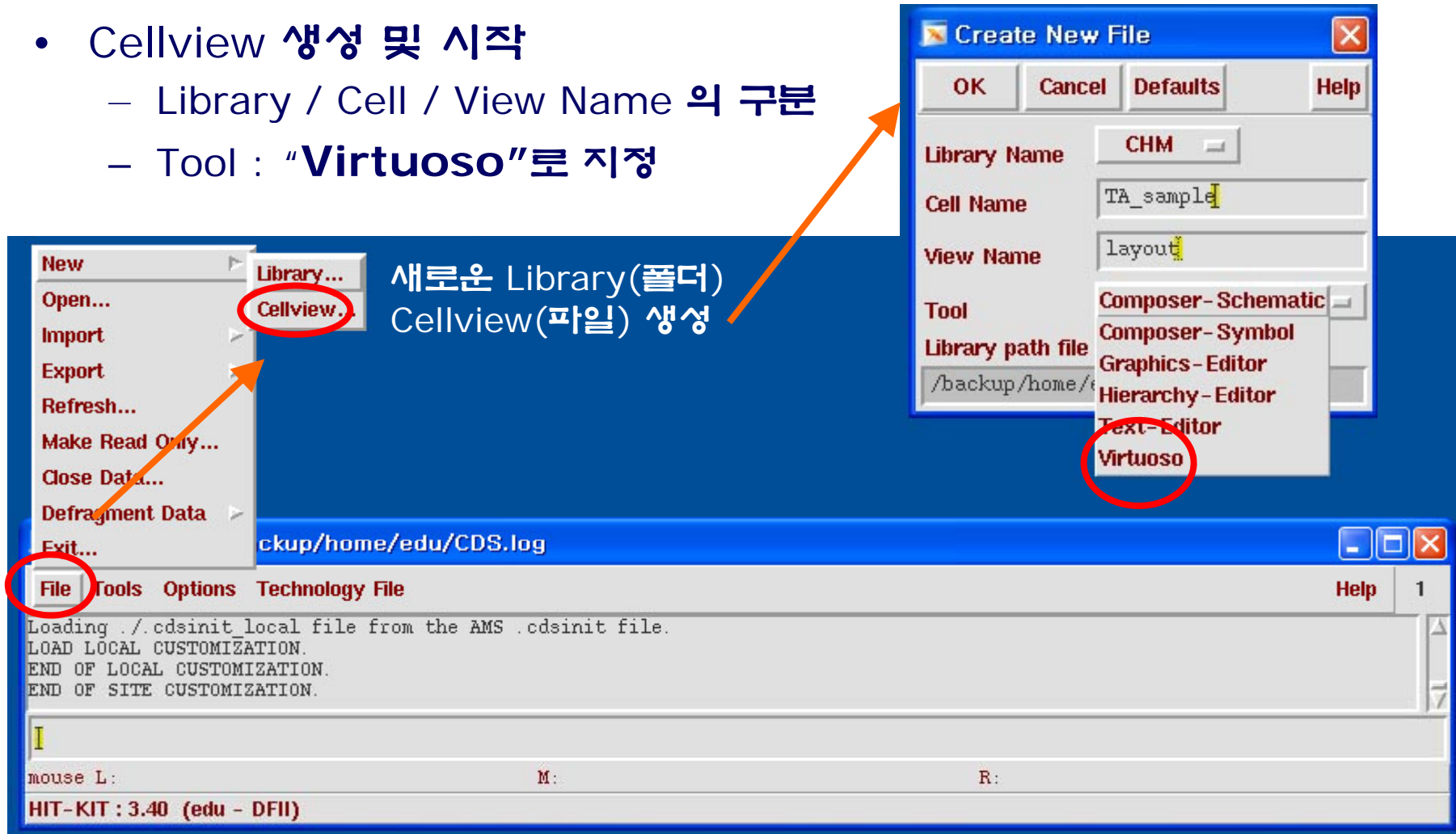
□ CADENCE (Layout) 실행

- CADENCE (Layout) 실행
 - xterm 창 프롬프트에 “layout&” 를 입력 (UNIX 환경)

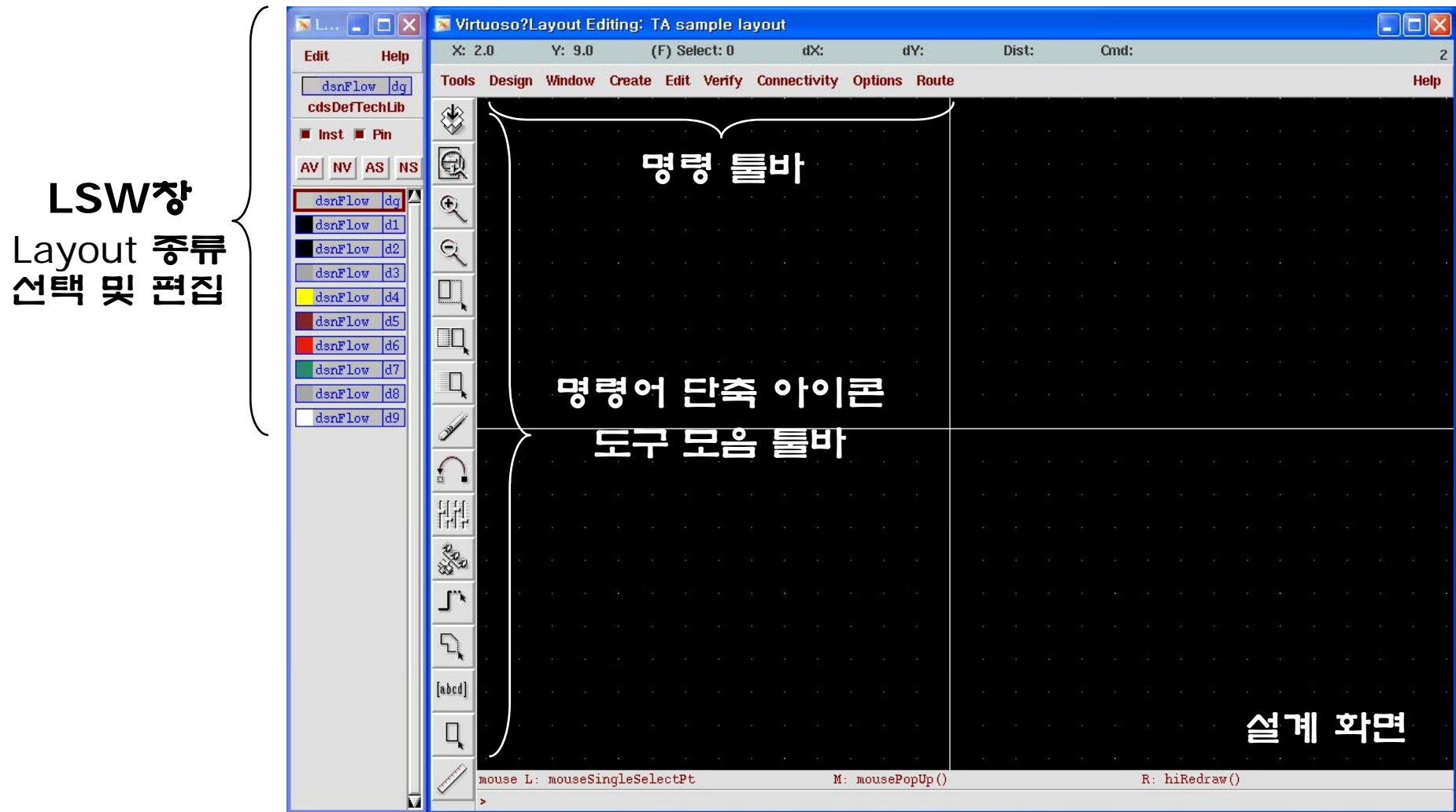


□ CADENCE – Library, Cellview 생성

- Cellview 생성 및 시작
 - Library / Cell / View Name 의 구분
 - Tool : “Virtuoso”로 지정

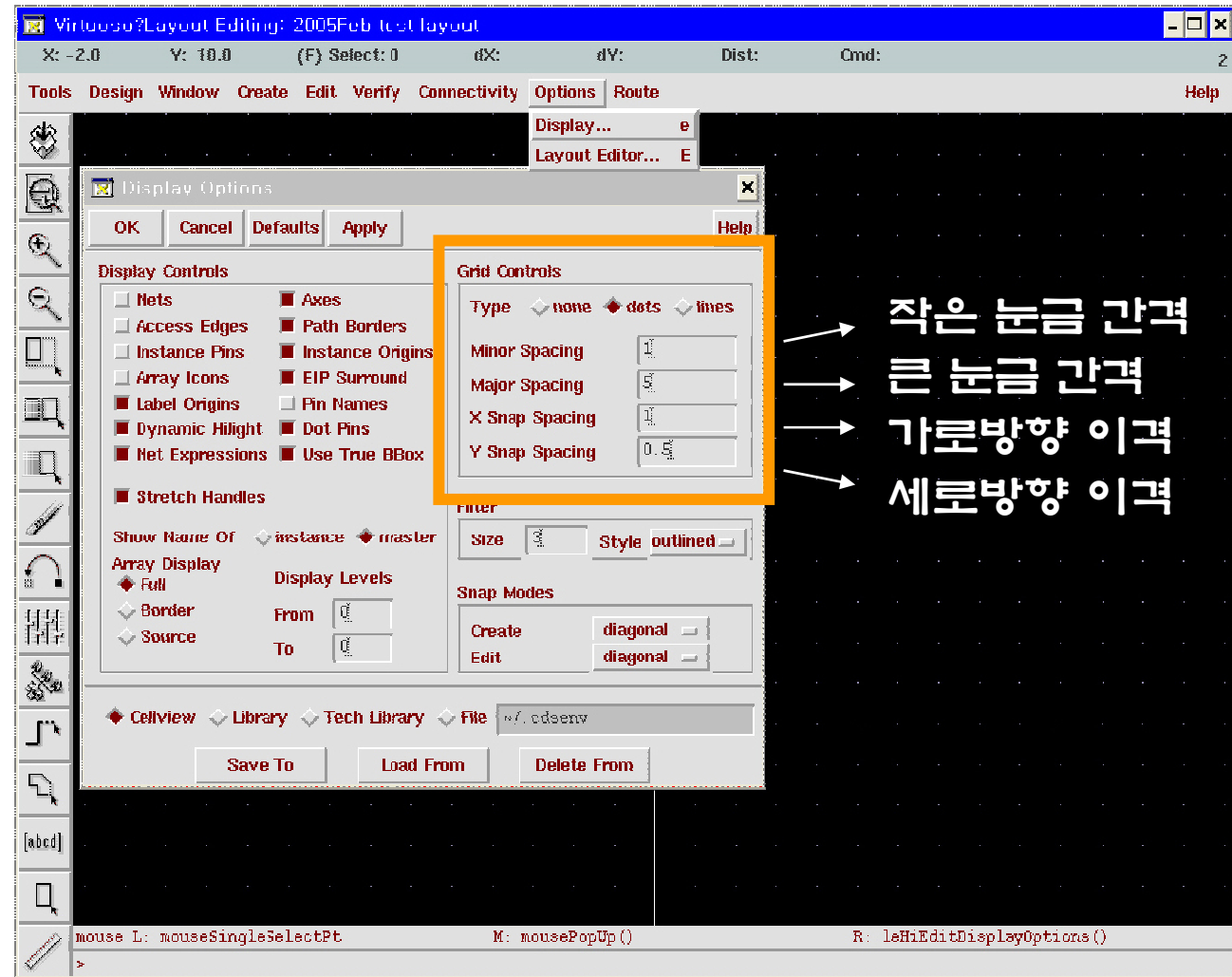


□ Virtuoso : Layout 편집 tool

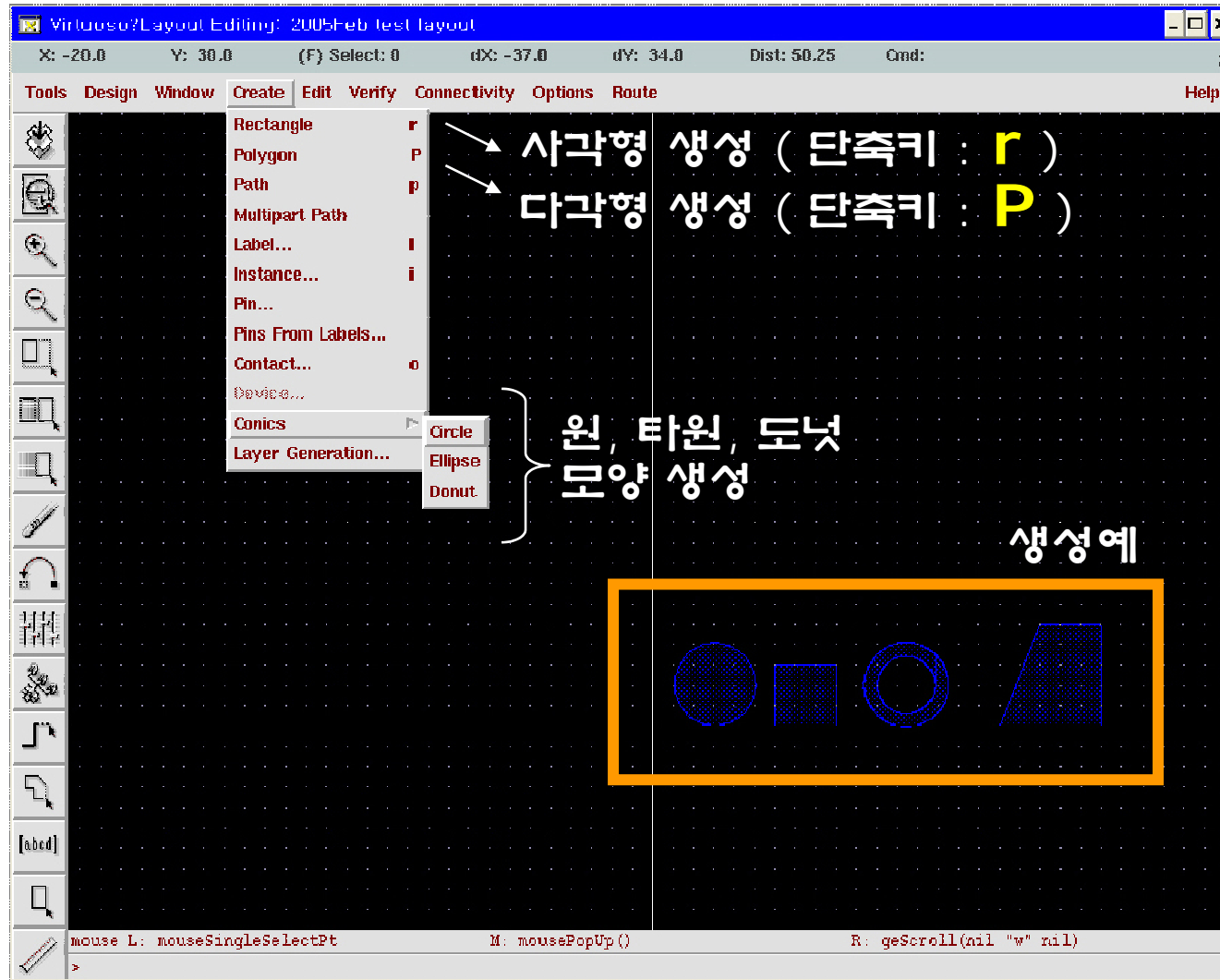


□ Grid Control (grid 및 snap의 조절)

- 단축키 : "e"



□ Create 명령어 (도형 생성)



□ Window 명령어

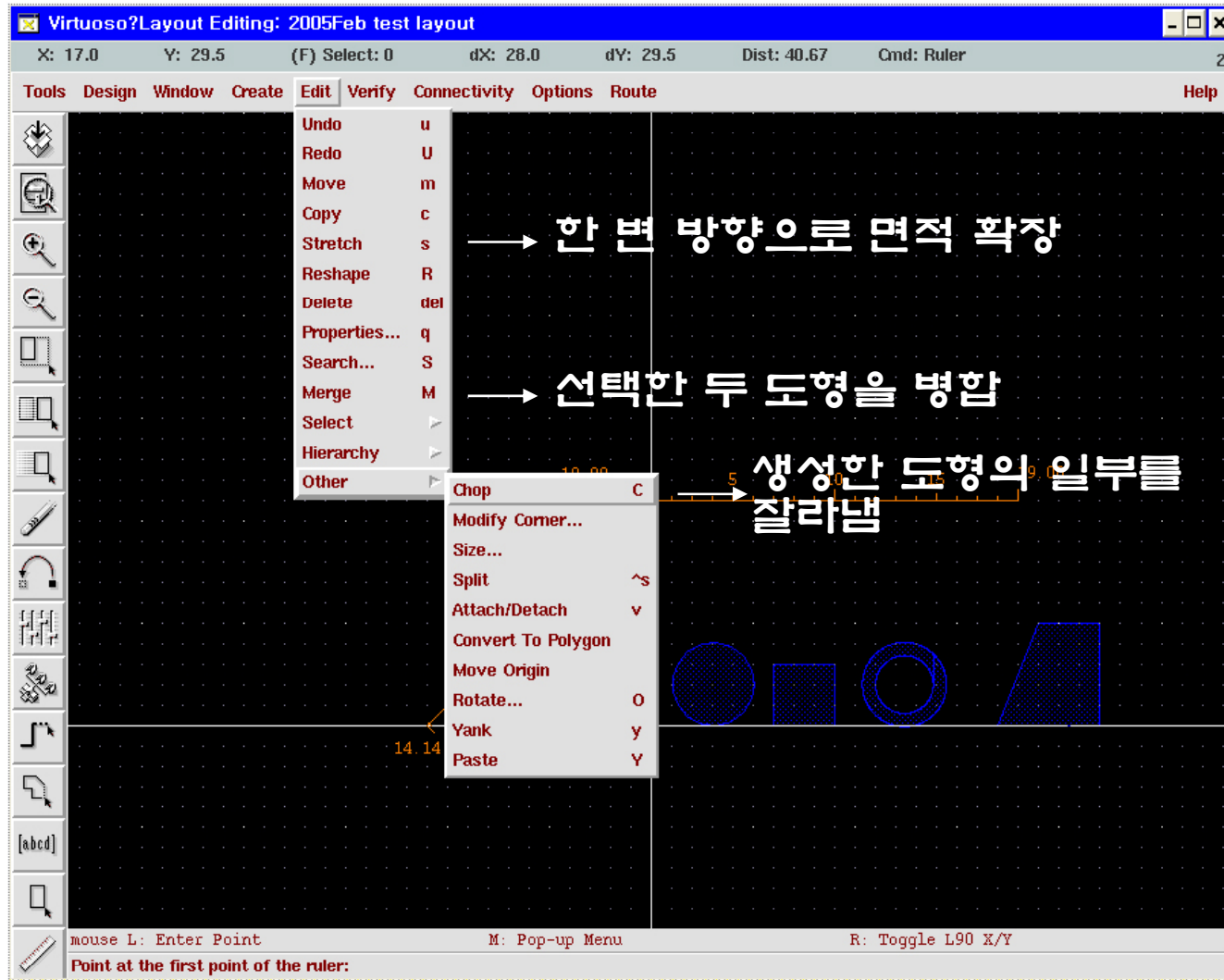
The screenshot shows the Virtuoso Layout Editor interface. The 'Window' menu is open, displaying various options. Annotations with arrows point to specific menu items:

- Zoom In** (z) → 화면확대 (단축키 : z)
- Zoom In by 2** (^z) → 화면확대 (단축키 : z)
- Zoom To Grid** (^g) → 화면축소 (단축키 : Z)
- Zoom To Sel Set** (^t) → 화면축소 (단축키 : Z)
- Zoom Out by 2** (Z) → 화면축소 (단축키 : Z)
- Create Ruler** (k) → Ruler(자) 생성 (단축키 : k)
- Clear All Rulers** (K) → 모든 Ruler(자) 제거 (단축키 : K)

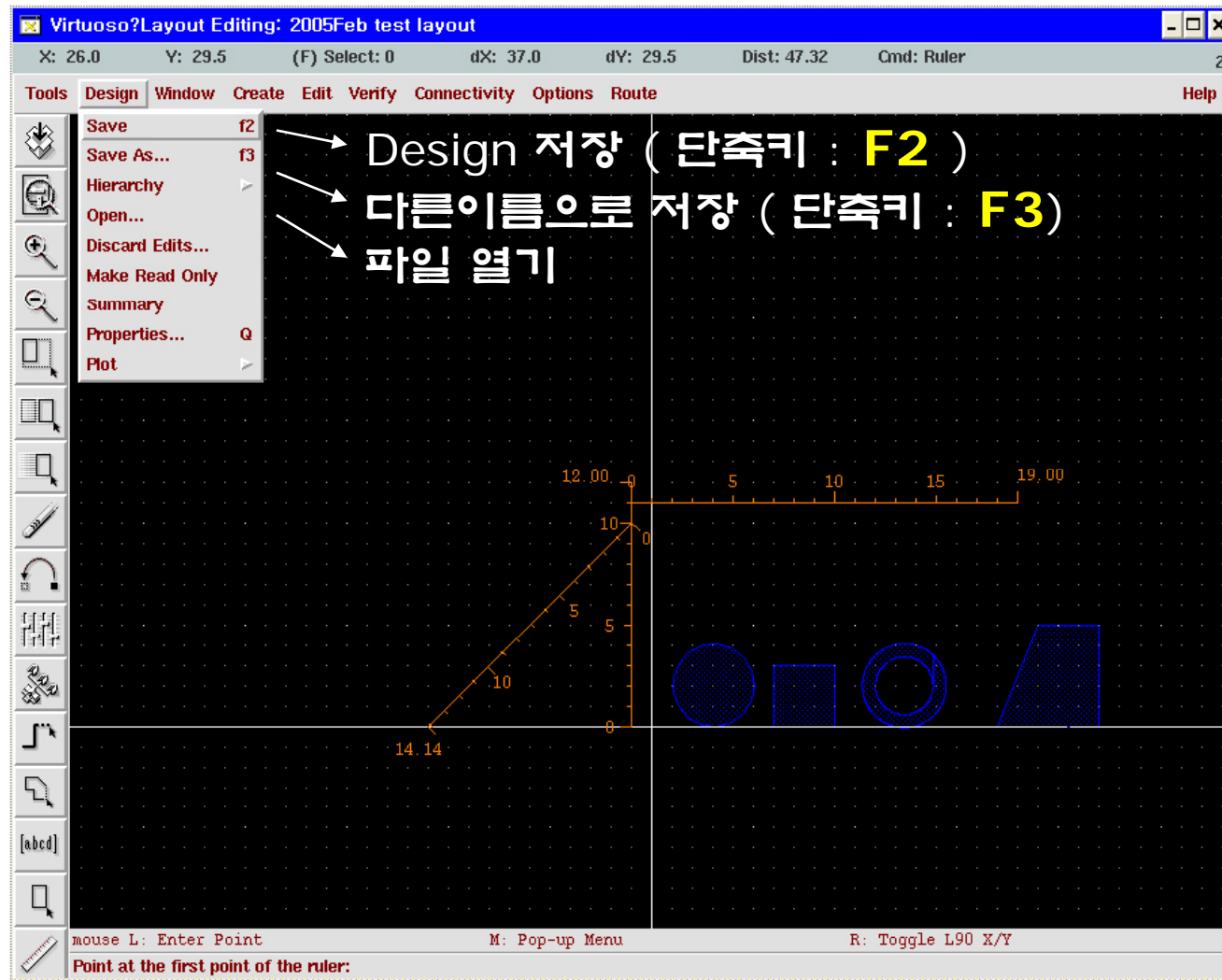
The main workspace shows a ruler and several geometric shapes (circle, rectangle, ring, trapezoid). A label '생성예' (Creation Example) points to the ruler. The status bar at the bottom indicates: 'mouse L: Enter Point', 'M: Pop-up Menu', 'R: Toggle L90 X/Y', and 'Point at the first point of the ruler:'.



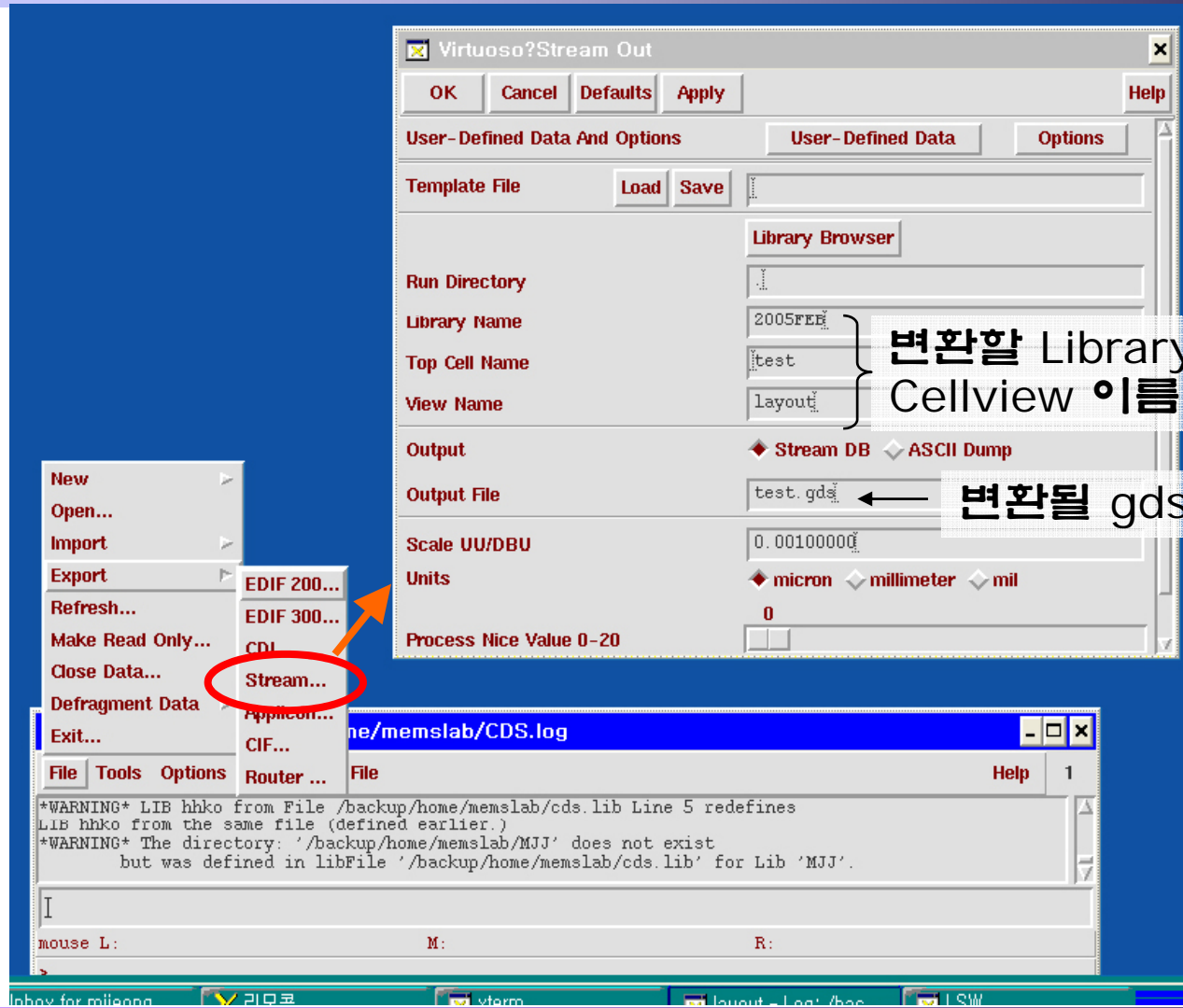
□ Edit 명령어



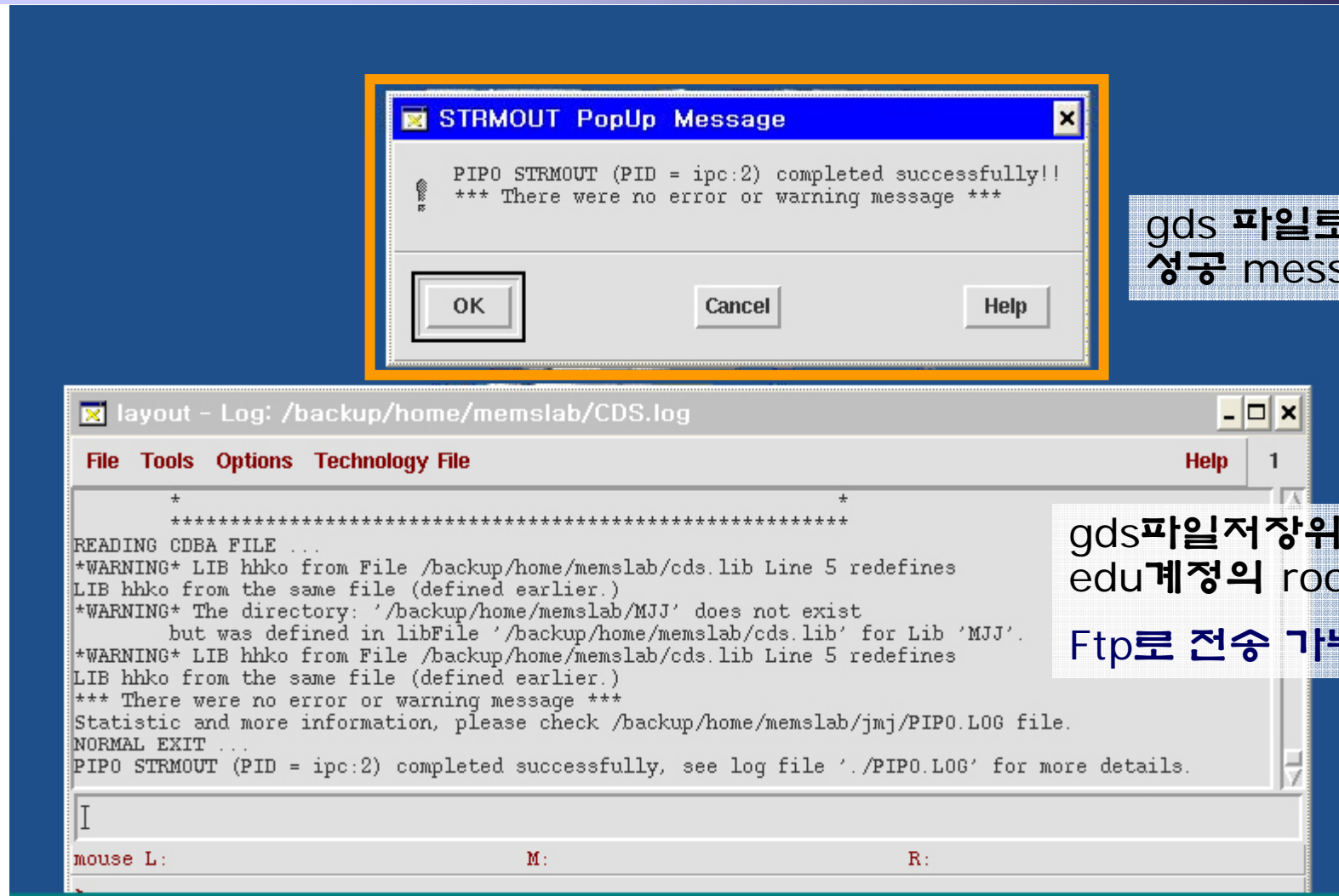
□ Design 명령어



□ Cellview 파일을 GDS 파일로 stream out



□ GDS 파일로 stream out 성공



gds 파일로 변환
성공 message

gds파일저장위치 :
edu계정의 root directory
Ftp로 전송 가능

