

Fig 5-1 A 3-D matrix definition of standards

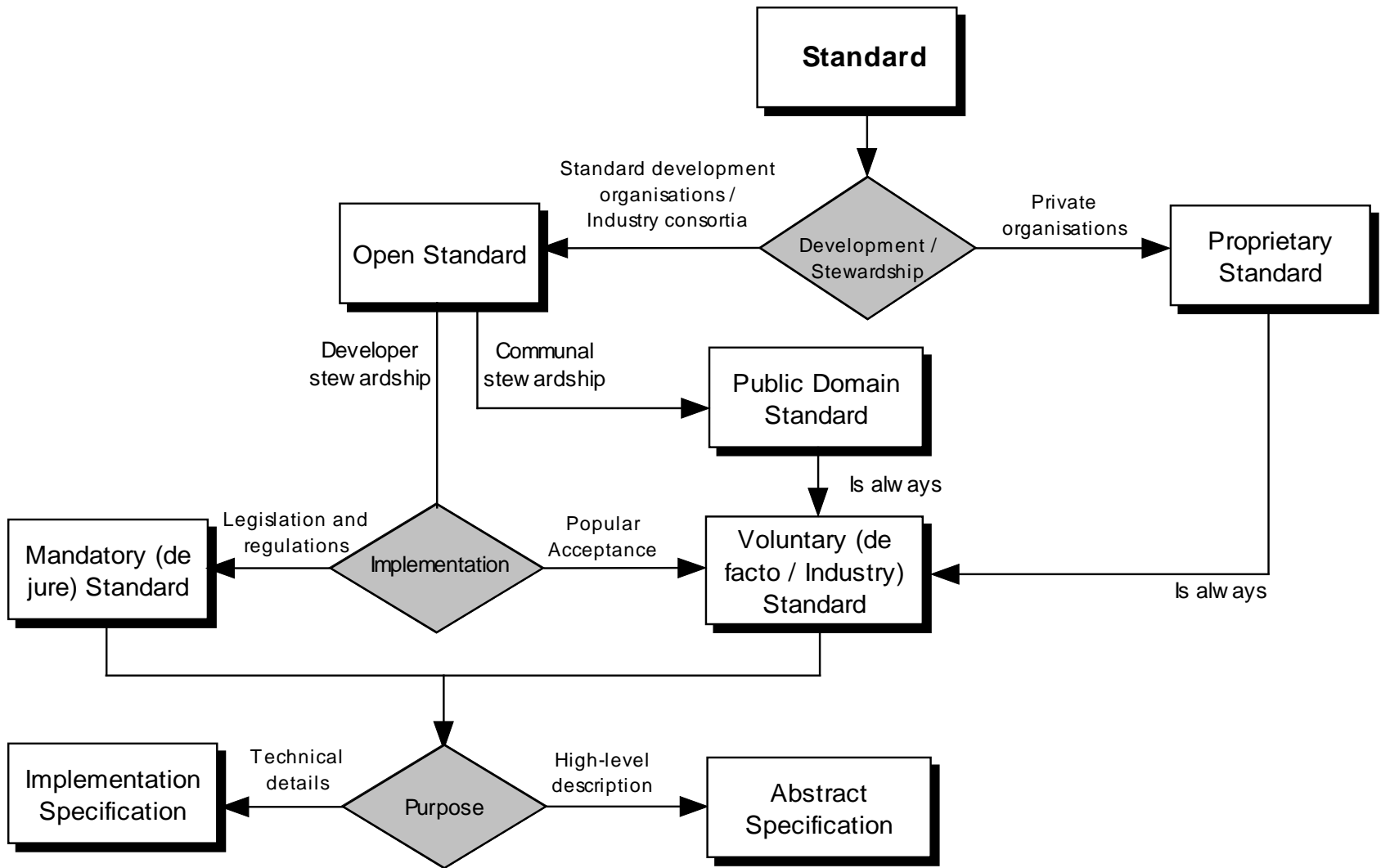


Fig 5-2 Classification of standards

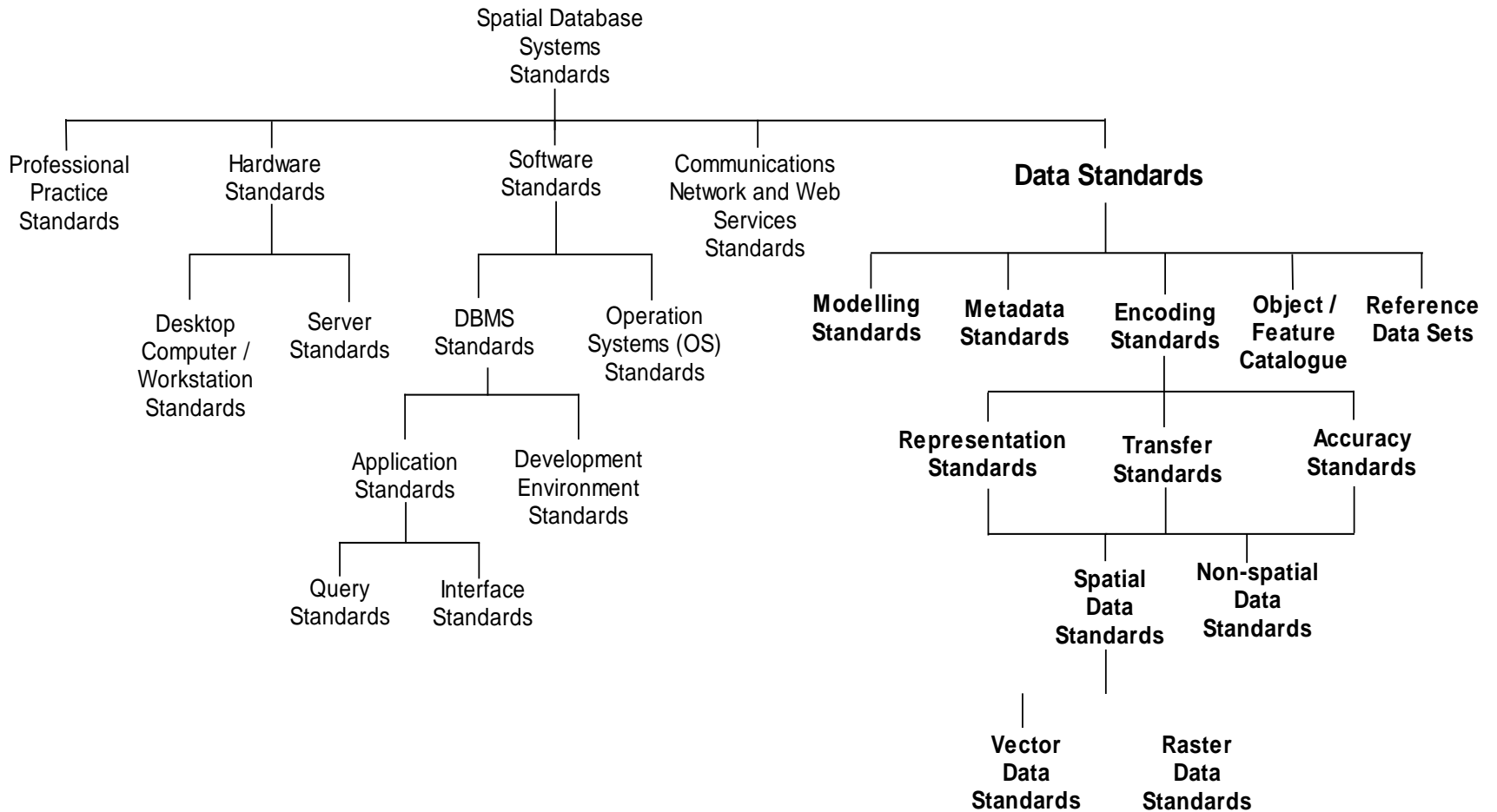


Fig 5-3 A typology of standards applicable to spatial DB systems

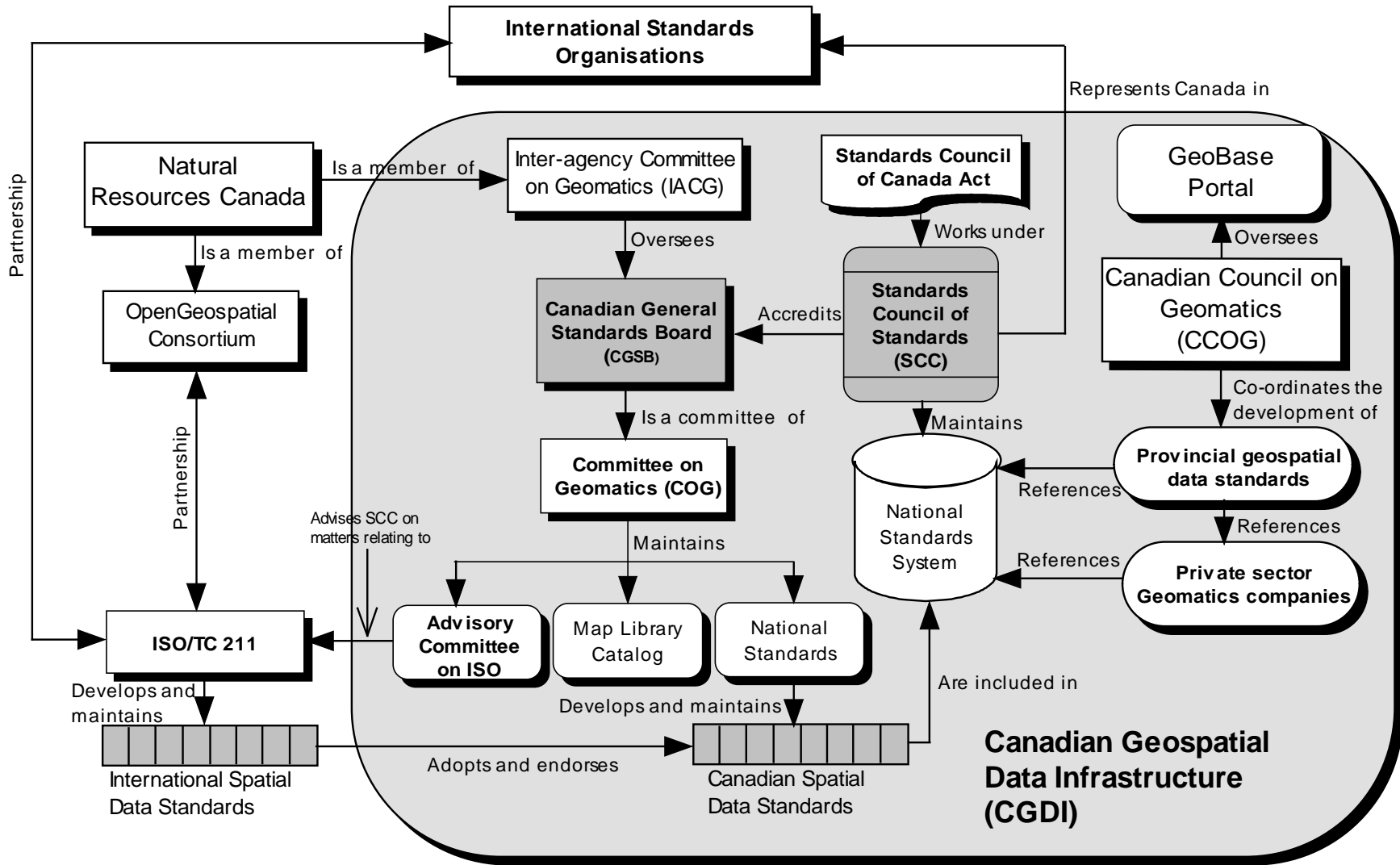


Fig 5-4 Standard development in Canada

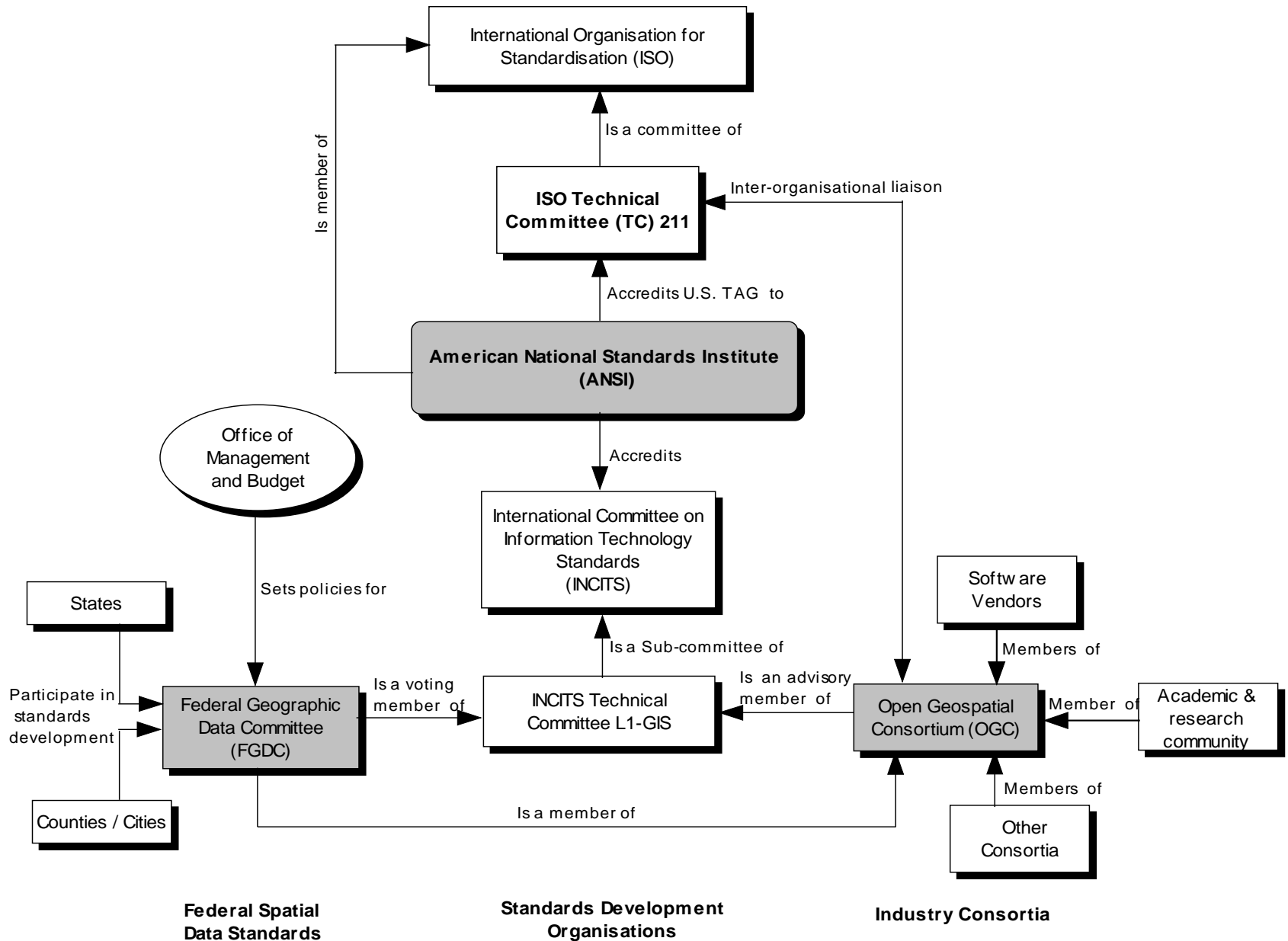


Fig 5-5 Standard development in United States

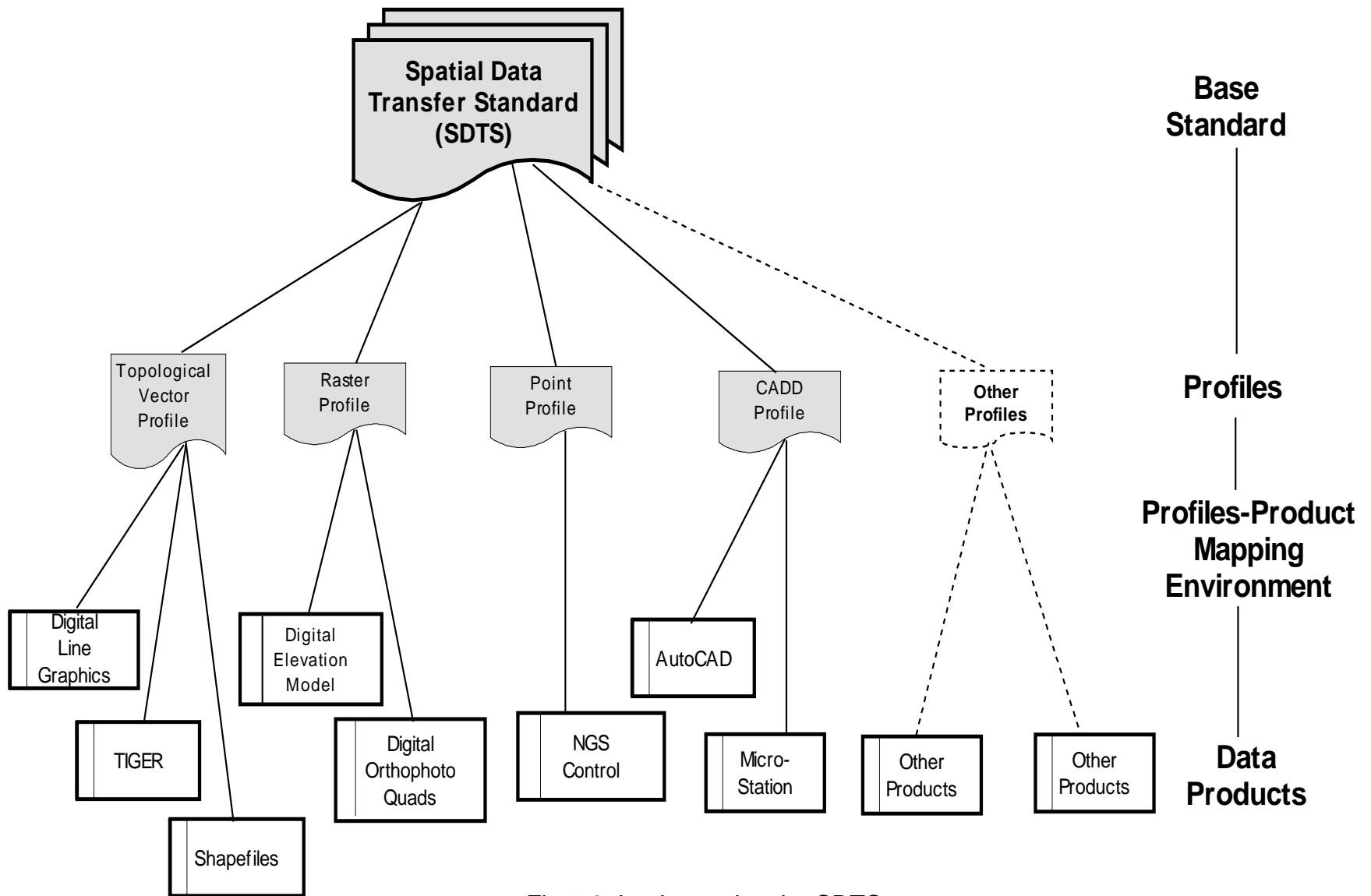


Fig 5-6 Implementing the SDTS

# Request Information Services

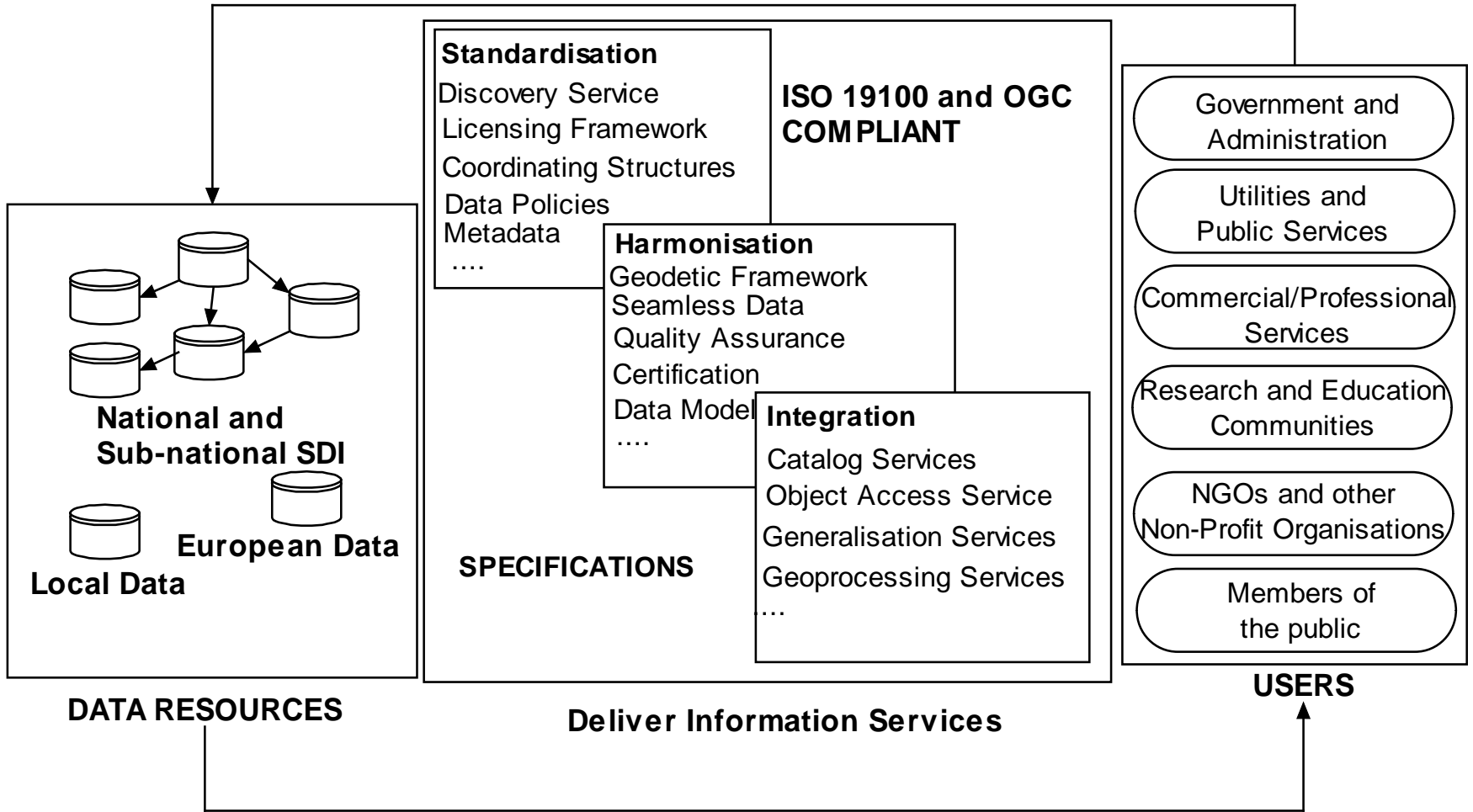


Fig 5-7 The INSPIRE spatial infrastructure high level model

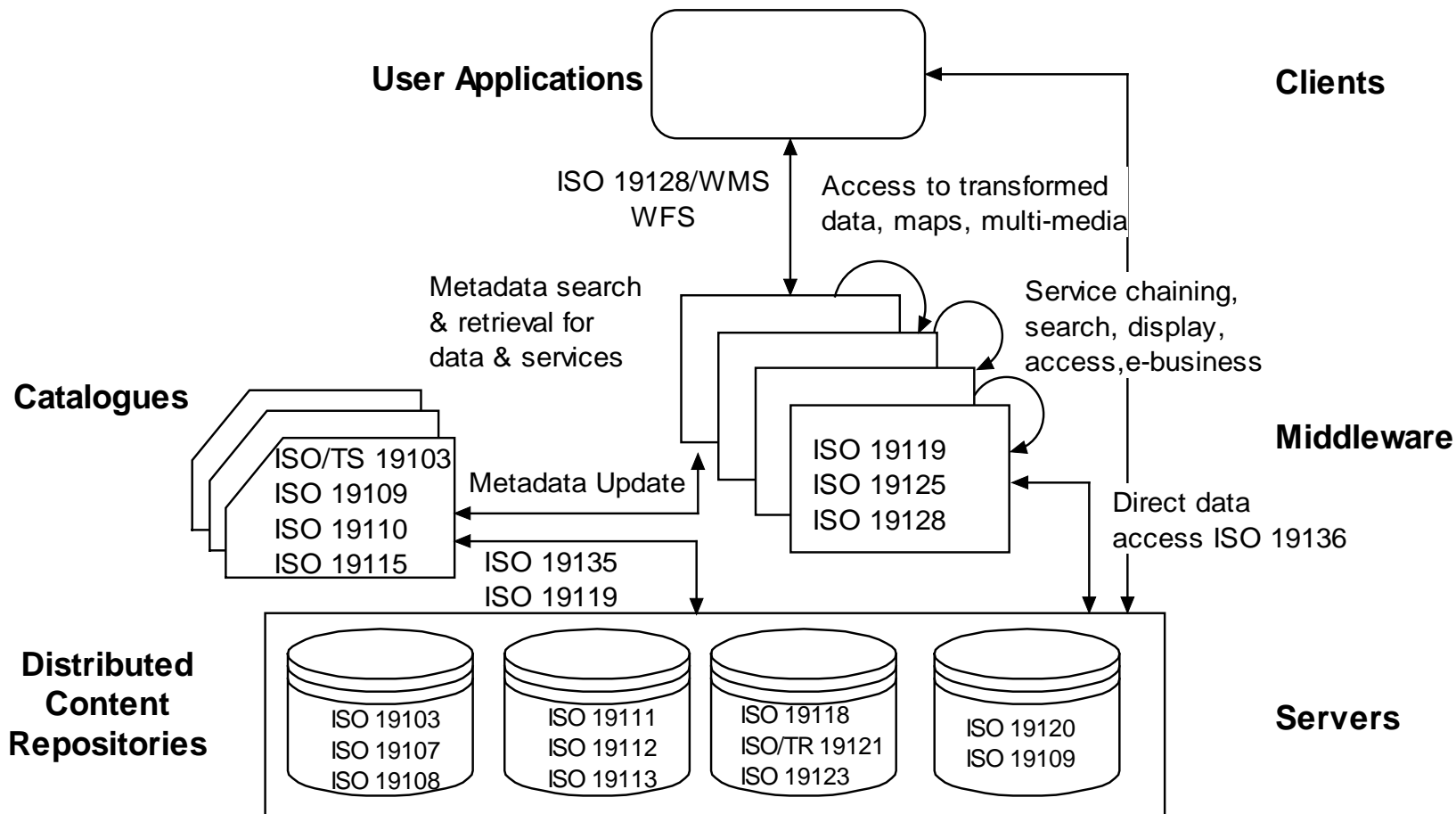


Fig 5-8 The INSPIRE architecture reference model including example ISO19100 standards



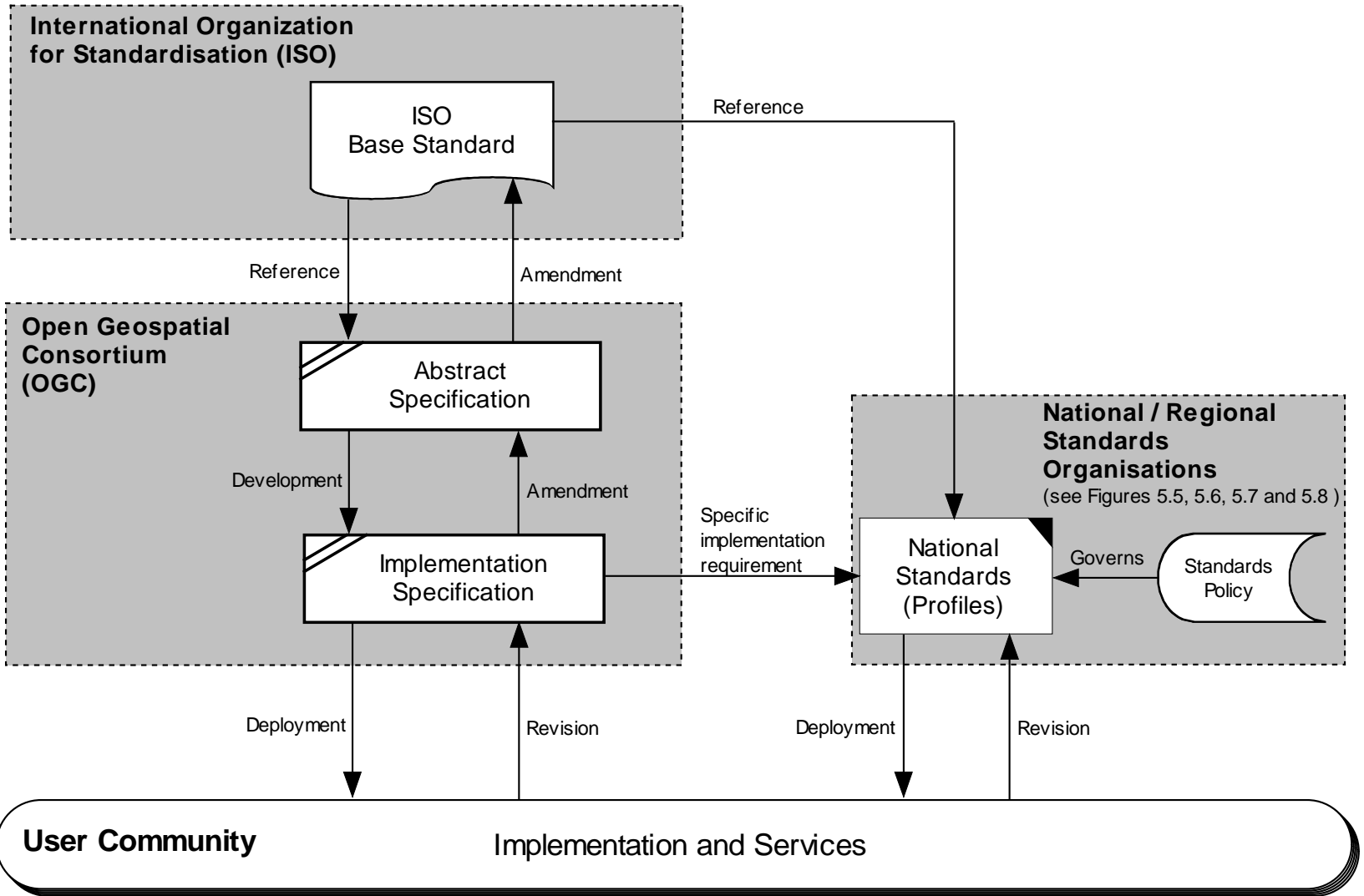


Fig 5-9 A model of a global spatial data standards infrastructure

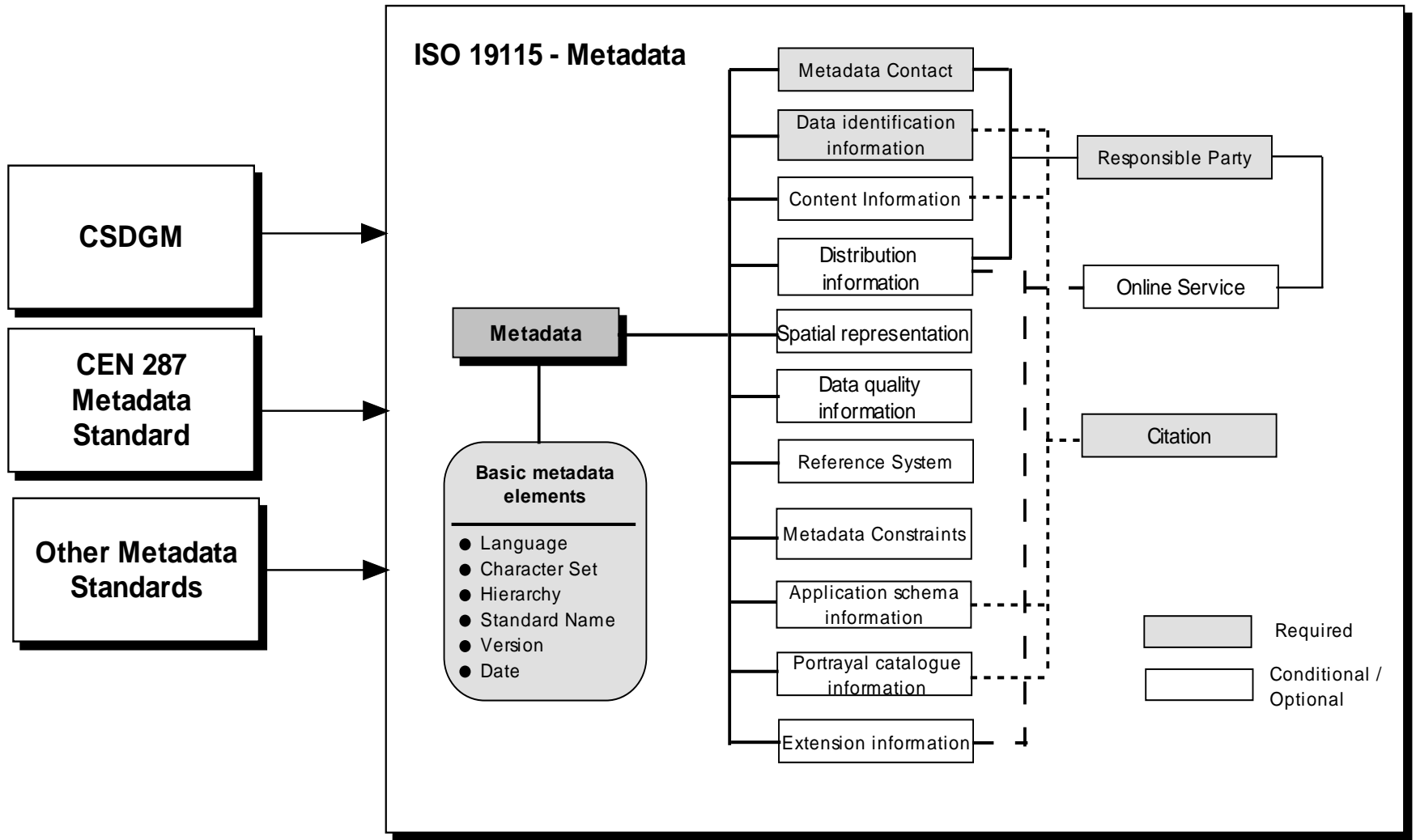


Fig 5-10 Organization of ISO 19115 metadata standard

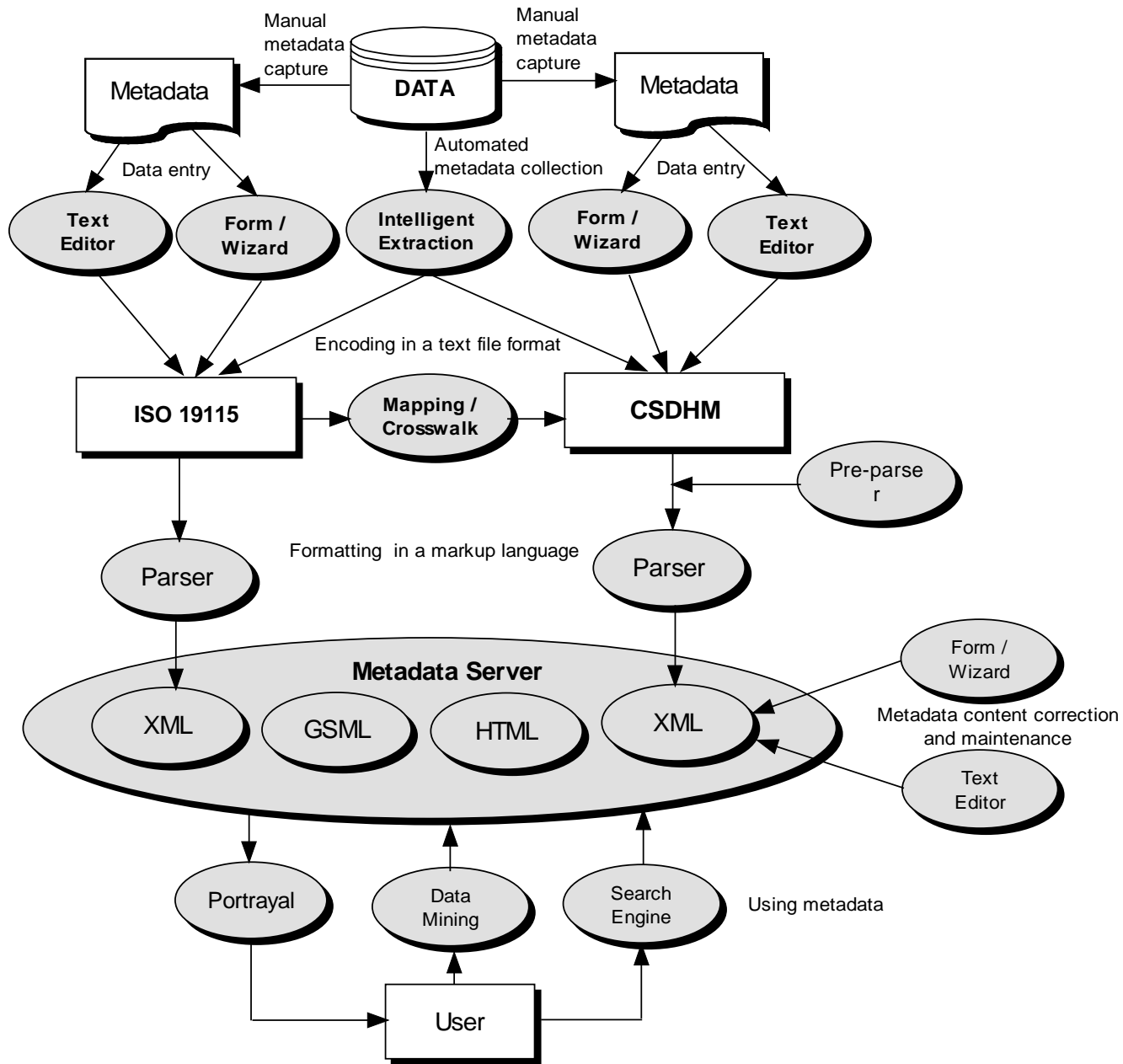


Fig 5-11 Implementing spatial metadata

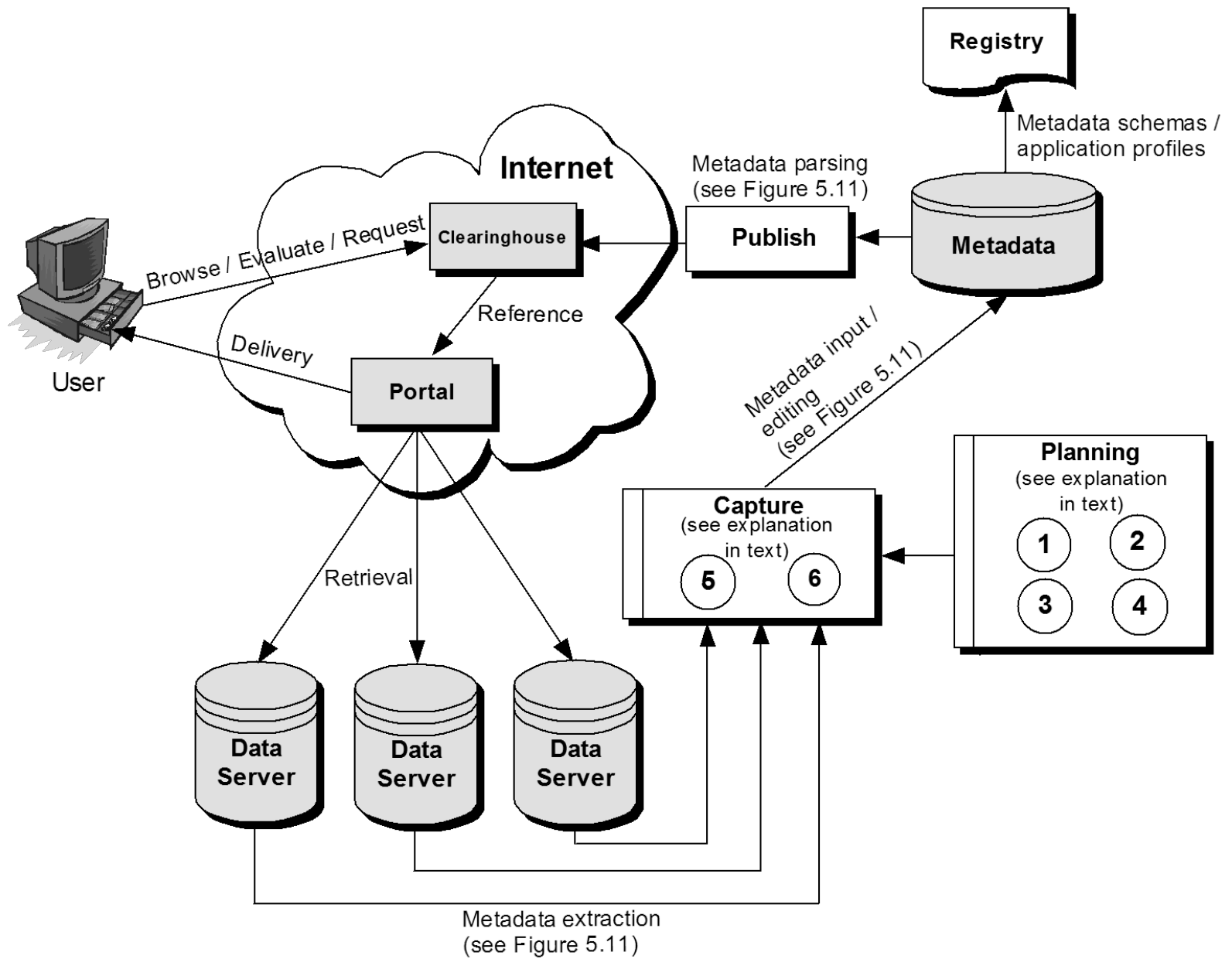


Fig 5-12 Implementing spatial metadata

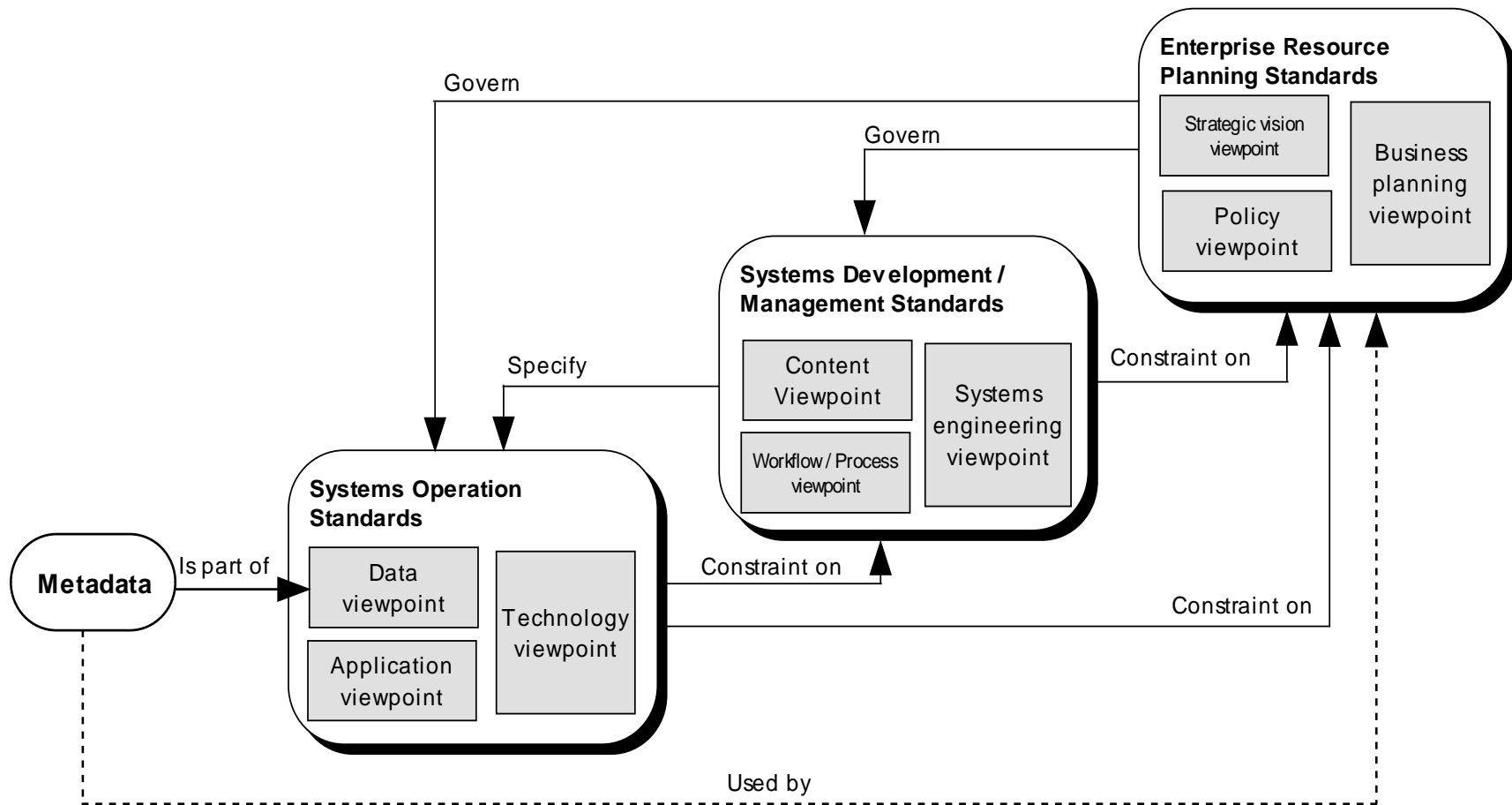


Fig 5-13 A model of a standards-based spatial DB system



Location: C:\Student\DESK2\Exercise02\Canada.gdb\Mjrroads

Stylesheet: FGDC ESRI

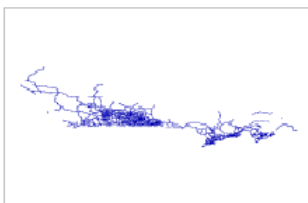
- talog
- C:\
  - COMSOL34
  - Documents and Settings
  - Flavio-Simulation
  - HDRM\_Contents
  - HNC
  - Intel
  - Program Files
  - Python25
  - RECYCLER
  - Student
    - DESK2
      - Customgeogtran
      - Exercise02
        - Canada.gdb
          - Elev
          - Mjcities
          - Mjrroads
          - Natlpark
          - PopStats
          - Province
          - Water
          - World.gdb
            - Areacode.shp
            - CanadaMap.mxd
            - Elevation.lyr
            - Geocoding\_Res
            - Parks2006.dbf
        - Exercise03
        - Exercise04
        - Exercise05
        - Exercise06
        - Exercise07
        - Exercise08
        - Exercise09
        - Exercise10
        - Exercise11
        - Exercise12
        - Exercise13
        - Exercise14
        - Geocoding
        - projection
      - DESK3
    - System Volume Informati
    - Temp
    - WINDOWS
    - XecureSSL

Contents Preview Metadata

## Canada Highways

File Geodatabase Feature Class

Description Spatial Attributes



**Keywords**  
**Theme:** line, highways, expressways, primary highways, roads, transportation  
**Place:** Canada  
**Temporal:** 2007

**Description**  
**Abstract**  
 Canada Highways represents the expressways and primary highways of Canada.

**Purpose**  
 Canada Highways provides the highway system of Canada with detail appropriate for national, regional, and provincial levels.

**Supplementary Information**  
 Largest scale when displaying the data: 1:10,000.

Status of the data

Time period for which the data is relevant

Publication Information

Data storage and access information



Location: C:\Student\WDESK2\WExercise02\WCanada.gdb\WJroads

Stylesheet: FGDC ESRI

- catalog
- C:\W
  - COMSOL34
  - Documents and Settings
  - Flavio-Simulation
  - HDRM\_Contents
  - HNC
  - Intel
  - Program Files
  - Python25
  - RECYCLER
  - Student
    - DESK2
      - Customgeogran
      - Exercise02
        - Canada.gdb
          - Elev
          - Mjcities
          - Mjroads
          - Natlpark
          - PopStats
          - Province
          - Water
        - World.gdb
        - Areacode.shp
        - CanadaMap.mxd
        - Elevation.lyr
        - Geocoding\_Res
        - Parks2006.dbf
      - Exercise03
      - Exercise04
      - Exercise05
      - Exercise06
      - Exercise07
      - Exercise08
      - Exercise09
      - Exercise10
      - Exercise11
      - Exercise12
      - Exercise13
      - Exercise14
      - Geocoding
      - projection
    - DESK3
  - System Volume Informati...
  - Temp
  - WINDOWS
  - XecureSSL

Contents | Preview | Metadata

## Canada Highways

File Geodatabase Feature Class

Description | Spatial | Attributes

### Horizontal coordinate system

Projected coordinate system name: Canada\_Albers\_Equal\_Area\_Conic

Geographic coordinate system name: GCS\_North\_American\_1983

#### Details

### Altitude System Definition

Resolution: 0.000100

Encoding Method: Explicit elevation coordinate included with horizontal coordinates

### Bounding coordinates

#### Horizontal

##### In decimal degrees

West: -148.062943

East: -34.207467

North: 72.139006

South: 35.810551

##### In projected or local coordinates

Left: -2280060.842000

Right: 3056229.454800

Top: 3584245.288800

Bottom: 334874.006100

### Lineage

#### FGDC lineage

Process step 1

Process step 2

Process step 3

#### Sources

Source 1: DMTI Spatial™ Canadian Data Bundle (DMTI Spatial Inc.)

### ESRI geoprocessing history

1. PROCESS



Location: C:\Student\DESK2\Exercise02\Canada.gdb\Mjroads

Stylesheet: FGDC ESRI

Contents | Preview | Metadata

atalog

- C:\
  - COMSOL34
  - Documents and Settings
  - Flavio-Simulation
  - HDRM\_Contents
  - HNC
  - Intel
  - Program Files
  - Python25
  - RECYCLER
  - Student
    - DESK2
      - Customgeogtran
      - Exercise02
        - Canada.gdb
          - Elev
          - Mjcities
          - Mjroads
          - Natlpark
          - PopStats
          - Province
          - Water
          - World.gdb
            - Areacode.shp
            - CanadaMap.mxd
            - Elevation.lyr
            - Geocoding\_Res
            - Parks2006.dbf
        - Exercise03
        - Exercise04
        - Exercise05
        - Exercise06
        - Exercise07
        - Exercise08
        - Exercise09
        - Exercise10
        - Exercise11
        - Exercise12
        - Exercise13
        - Exercise14
        - Geocoding
        - projection
      - DESK3
    - System Volume Informati...
    - Temp
    - WINDOWS
    - XecureSSL

**Lineage**

**FGDC lineage**

**Process step 1**

*Process description:* The following steps were performed by ESRI: Extracted shapefile from DMTI Spatial™ Canadian Data Bundle. Selected only expressways and primary highways, and converted shapefile to ArcInfo® coverage. Dissolved features based on all attributes, and converted back to shapefile. Added TYPE and KILOMETERS attributes and calculated their values. Added HWY\_NUM attribute containing the value of highway numbers only from the NAME attribute. Changed NAME values to title case. Created ArcGIS® layer file (.lyr), projection file (.prj), and spatial indices. Converted the data set to SDC.

*Process software and version:* ArcView® GIS 3, ArcGIS® 9, ArcSDE®

*Source used:* DMTI Spatial Inc.

*Process date:* 20070710

**Process step 2**

*Process description:* Dataset copied.

*Source used:* \\BIGBOWL\C\$\Desk2DevData\Canada.gdb

**Process step 3**

*Process description:* Dataset copied.

*Source used:* \\Rushmore\ILT Courses\desk2\_93\Data\_Working\Student\DESK2\Exercise02\Canada.gdb

**Sources**

**Source 1: DMTI Spatial™ Canadian Data Bundle (DMTI Spatial Inc.)**

*Media:* CD-ROM

*Scale denominator:* 1000-50000

*Contribution:* Attribute and geospatial data

**Currentness of this source**

**ESRI geoprocessing history**

1. Process
2. Process

---

**Spatial data quality**

**Horizontal positional accuracy**

The positional accuracy is unknown.

---

**Spatial data description**

**Vector data information**

**ESRI description**

**Mjroads**





Location: C:\Student\DESK2\Exercise02\Canada.gdb\Mjroads

Stylesheet: FGDC ESRI

- talog
- C:\
  - COMSOL34
  - Documents and Settings
  - Flavio-Simulation
  - HDRM\_Contents
  - HNC
  - Intel
  - Program Files
  - Python25
  - RECYCLER
  - Student
    - DESK2
      - Customgeogtran
      - Exercise02
        - Canada.gdb
          - Elev
          - Mjcities
          - Mjroads
          - Natlpark
          - PopStats
          - Province
          - Water
        - World.gdb
          - Areacode.shp
          - CanadaMap.mxd
          - Elevation.lyr
          - Geocoding\_Res
          - Parks2006.dbf
      - Exercise03
      - Exercise04
      - Exercise05
      - Exercise06
      - Exercise07
      - Exercise08
      - Exercise09
      - Exercise10
      - Exercise11
      - Exercise12
      - Exercise13
      - Exercise14
      - Geocoding
      - projection
    - DESK3
  - System Volume Informati
  - Temp
  - WINDOWS
  - XecureSSL

Contents Preview Metadata

### Canada Highways

File Geodatabase Feature Class

Description Spatial Attributes

**Details for Mjroads**  
Type of object: Feature Class  
Number of records: 39629

- Description**
- Attributes**
- OBJECTID
  - ObjectID
  - Shape
  - NAME
  - TYPE
  - HWY\_NUM
  - Shape\_Length
  - KILOMETERS



당신 지금 뭐라고 했어?

아 이따 귀신 이거 나와