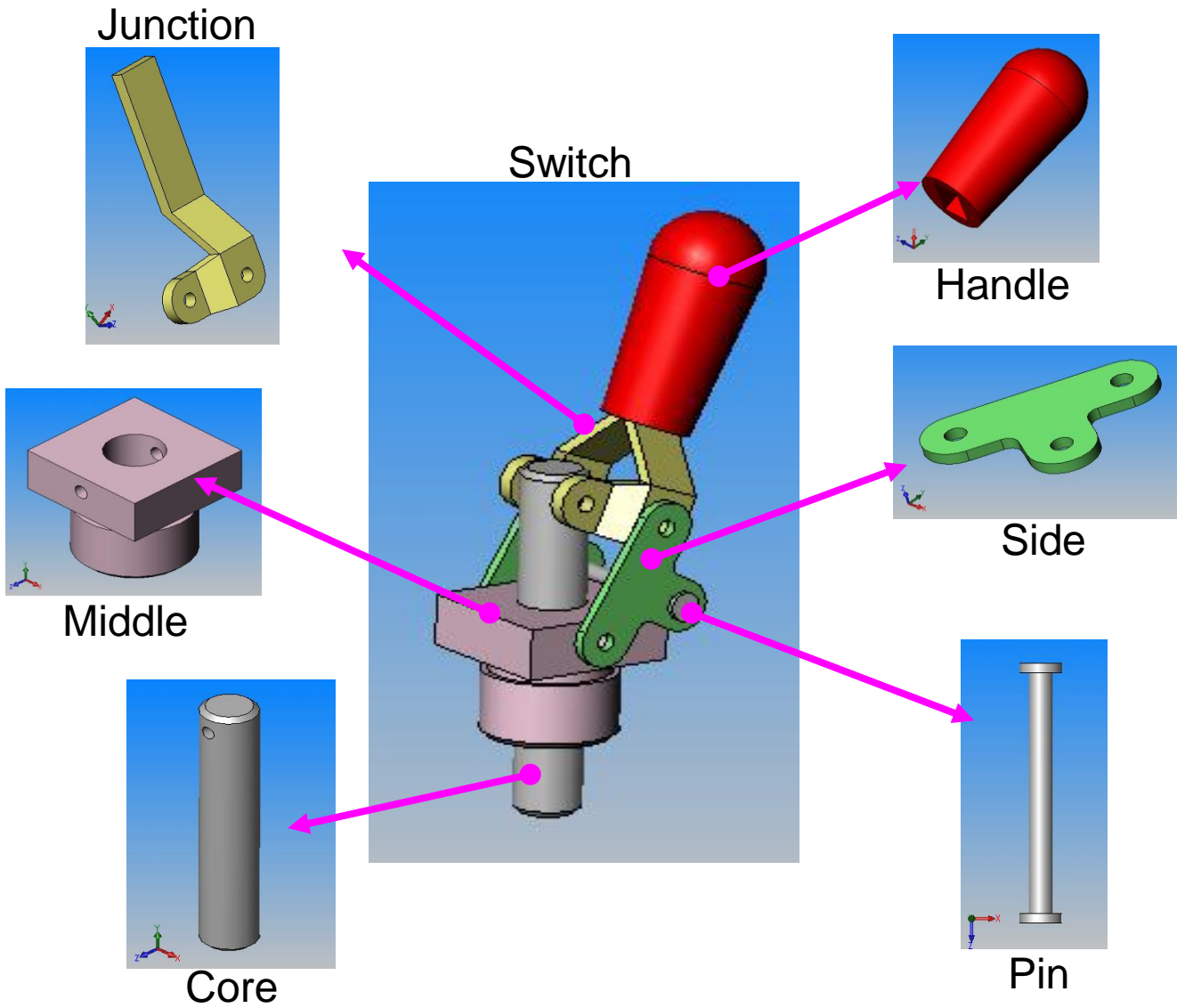


CAD/CAM

Homework 1

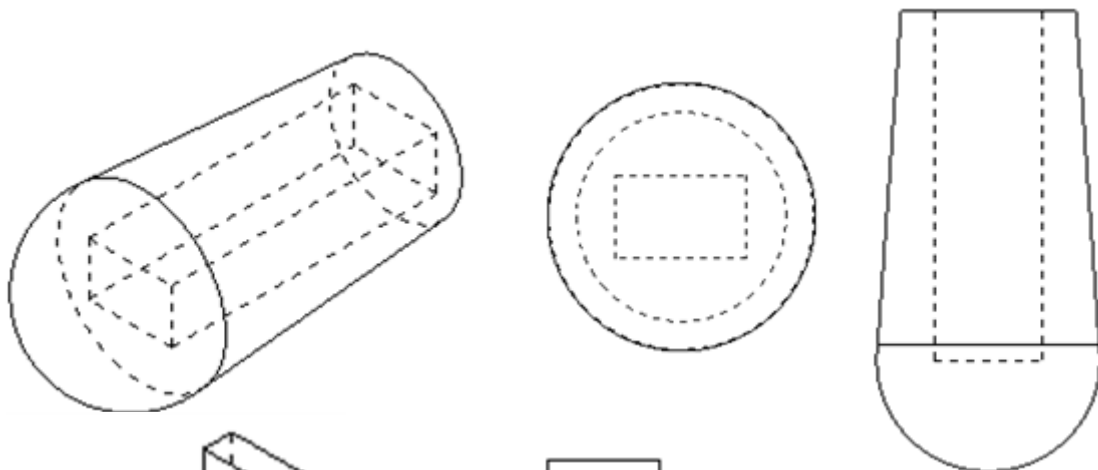
Top Down Modeling in SolidWorks
Due Date : 2007.10.17. 23:30:00

Switch Modeling

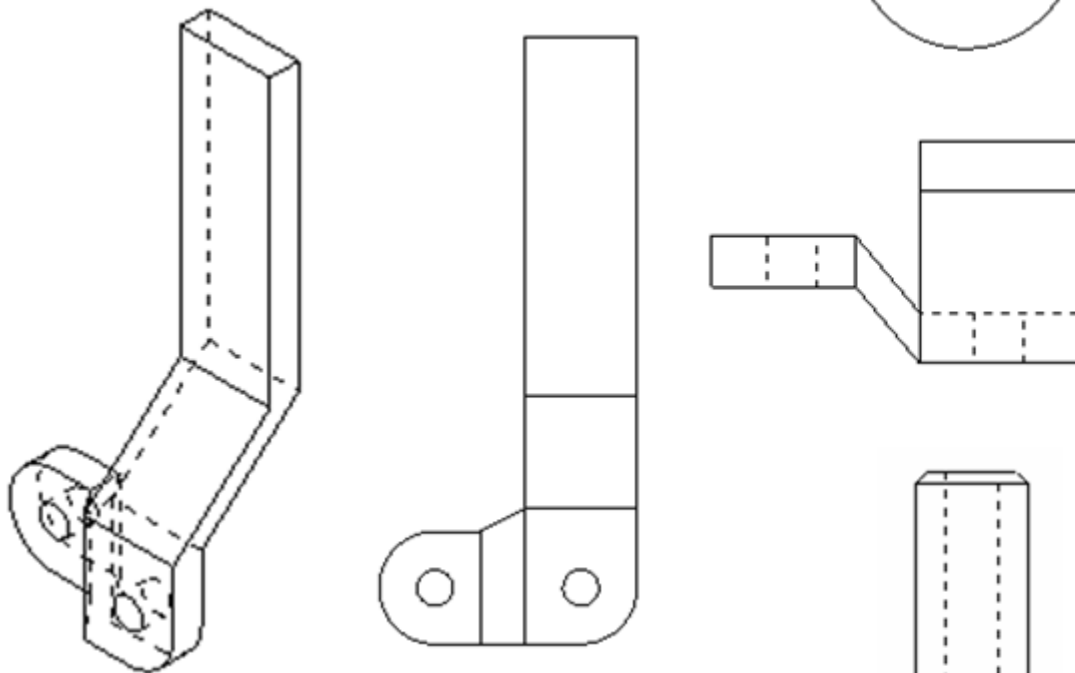


Handle / Junction / Core

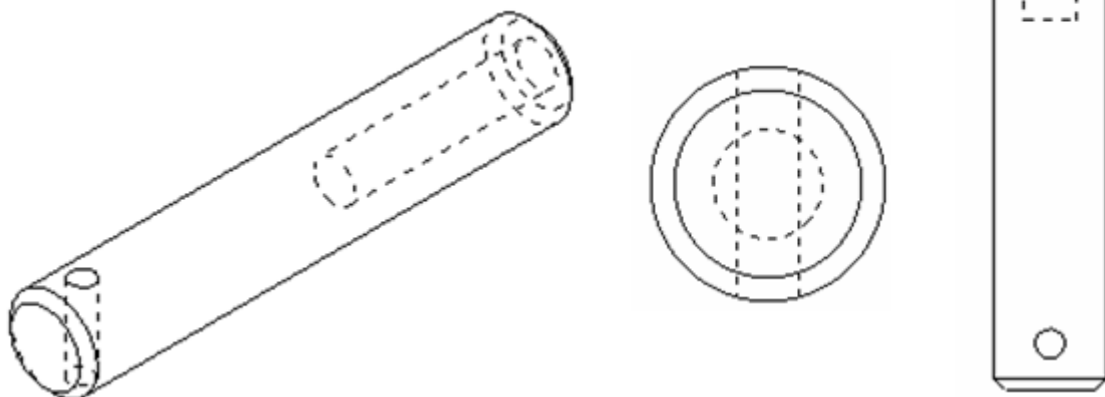
Handle



Junction

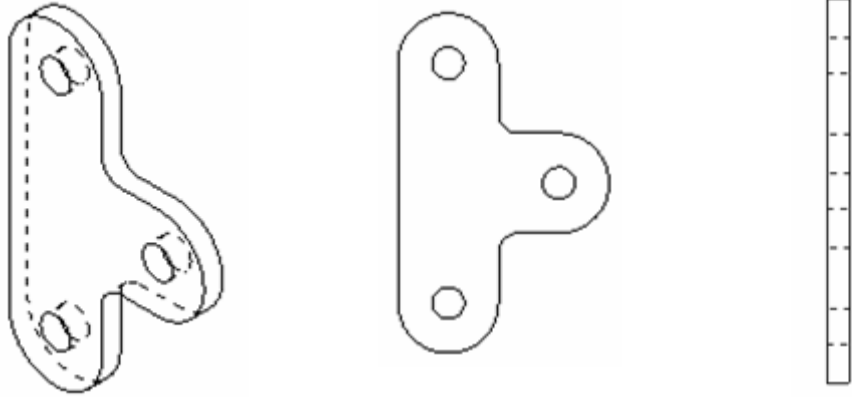


Core

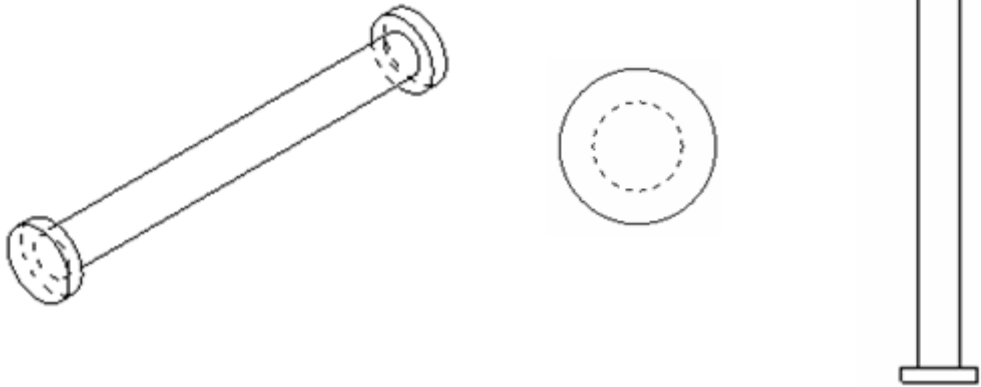


Side / Pin / Middle

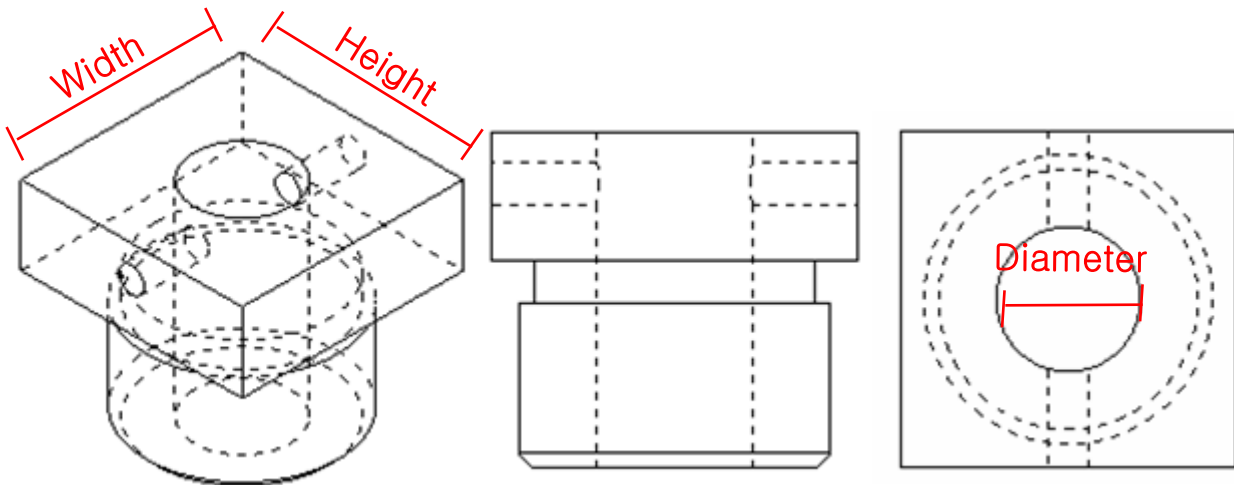
Side



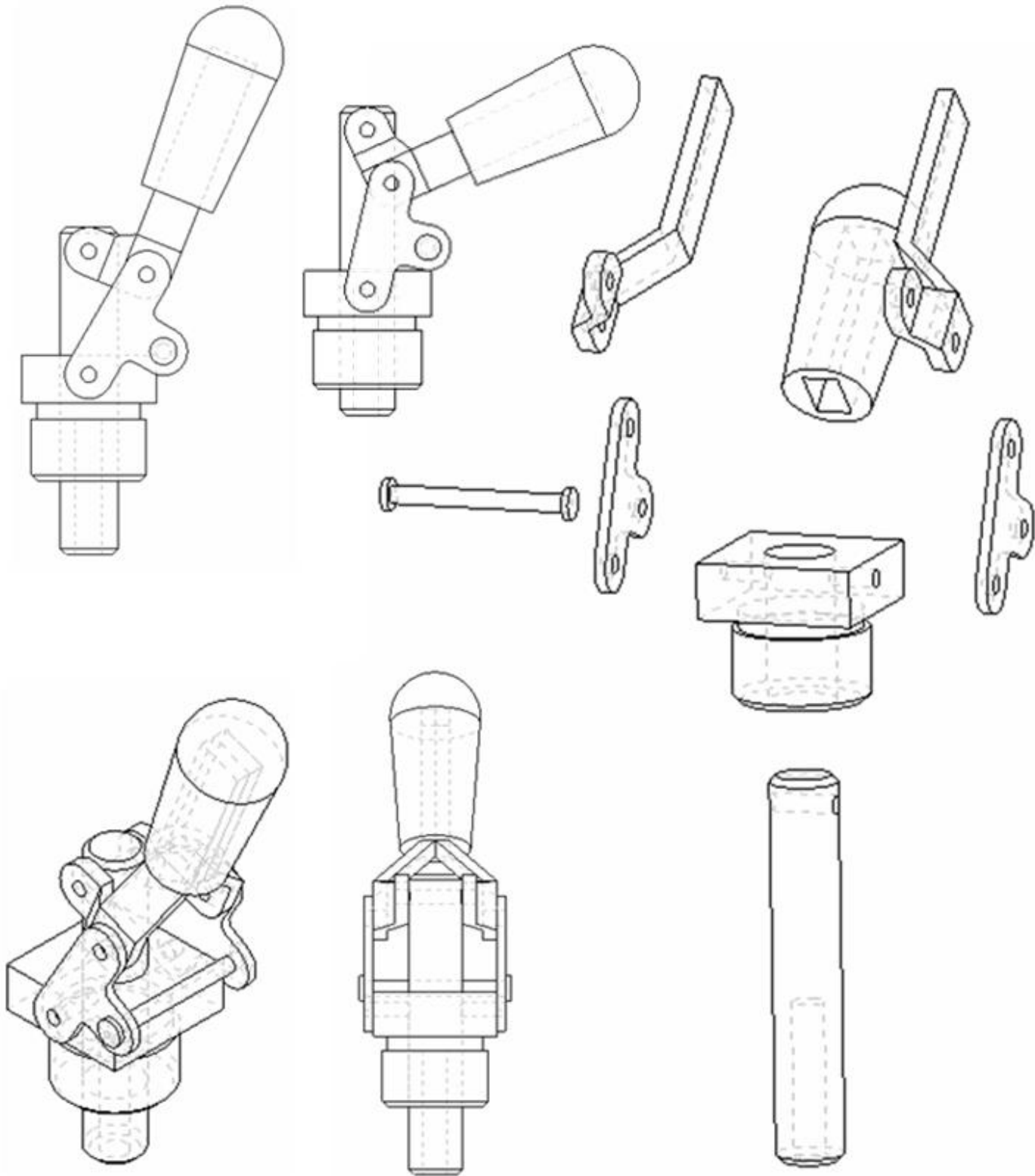
Pin



Middle



Switch Motion / Explode



Requirements

- Make a **top layout** sketch in the assembly.
- Make parts from the top layout.
- Name each parts/assembly as pictures.
- Use proper dimensions in your discretion.
- Make all sketches as **fully defined** state.
- Insert **mating condition** to move core after moving handle.
- Requirements for **Equations**
 - Top Layout sketch must include 'Middle' Part
 - Height(or Width), Diameter are Key values
 - User equation with key values
 - If Key values are changed, other dimension should be changed properly
 - If Height(or Width) be changed, followings should be changed
 - >> Distance between Side parts
 - >> **Distance between Junction parts (Optional)**
 - If Diameter be changed, followings should be changed
 - >> Diameter of Core part
 - >> **Distance between Junction parts (Optional)**
 - Changed of distance of Junctions is Optional (Extra points)

Submission Details

- Due : Oct 17, 2007, 23:30:00.
 - Credit : 10 points + α
 - Delay penalty : 2 point per 24 hours.

- Objects on demand :
 - SolidWorks Assembly/Part files
 - Write a short REPORT.TXT file which describes your implementation.

- Submit : <http://etl.snu.ac.kr>
 - You must compress above all files as a **Zip** file named "HW1_(student ID).zip"
 - Upload to Assignment Board (과제)
 - Ex) HW1_200012345.zip

- Question :
 - E-mail : icy7902@snu.ac.kr
 - Tel : 02 - 880 - 7447