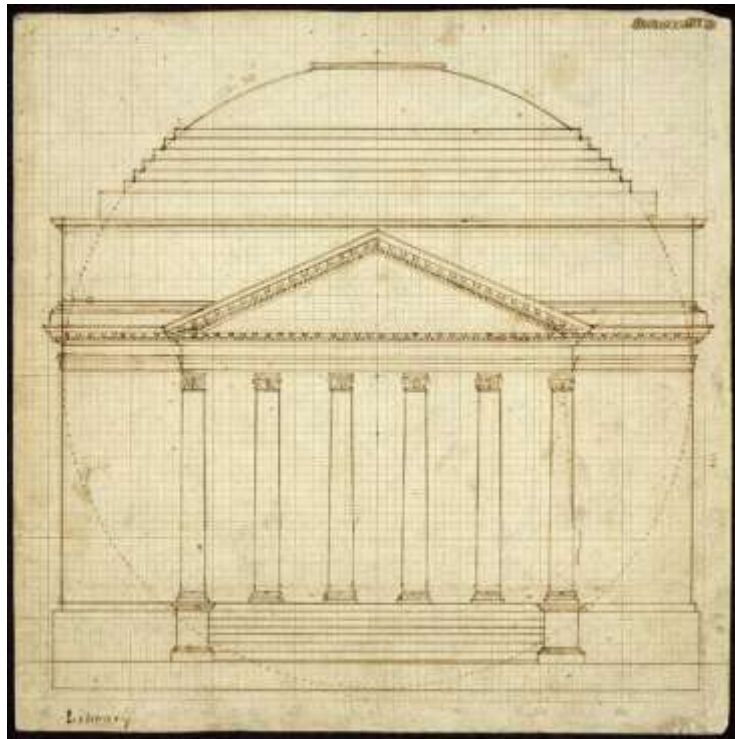
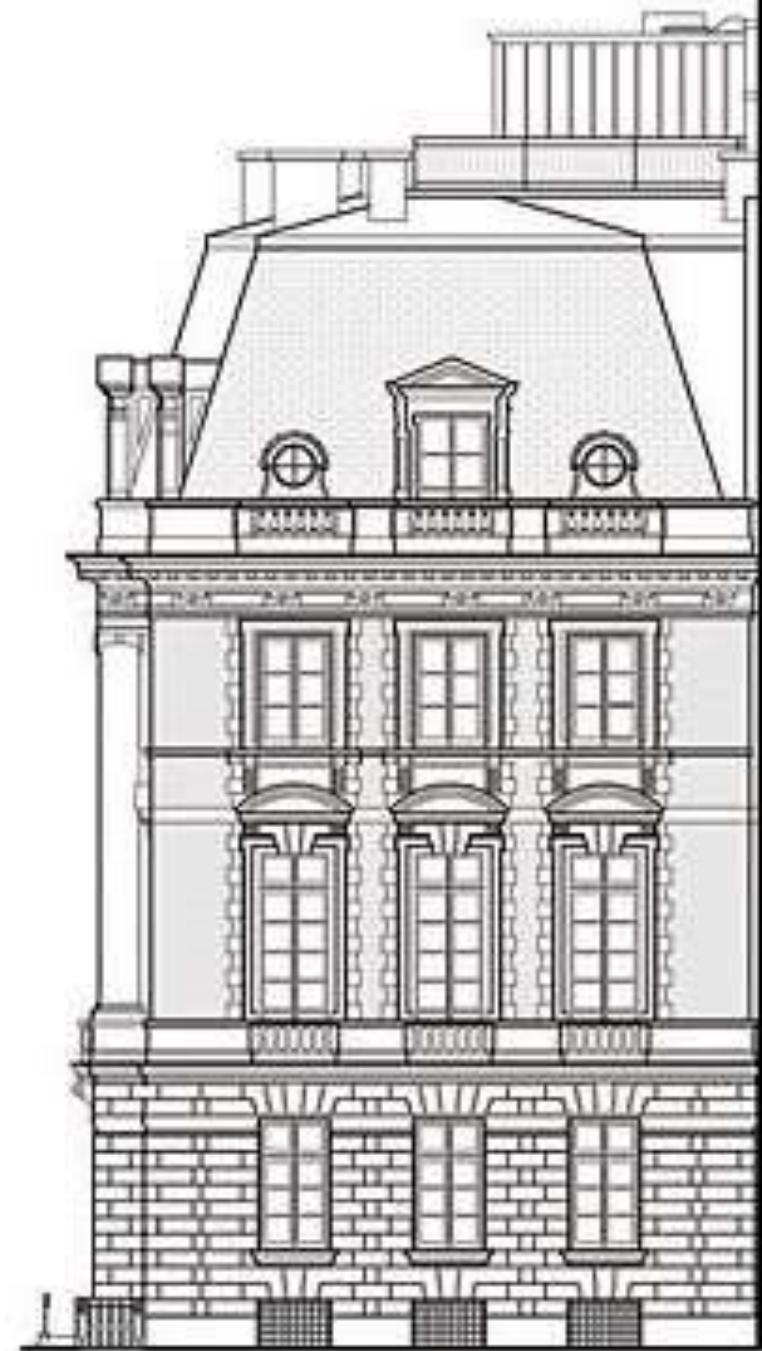
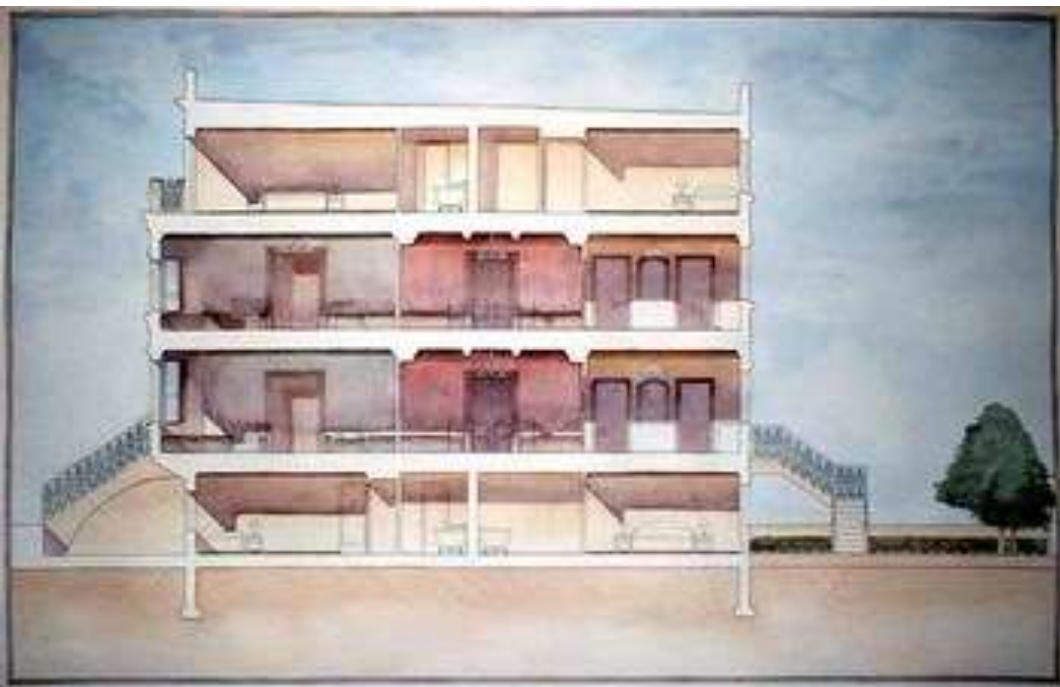


Composite Representation

Hong Studio – SNU DAAE





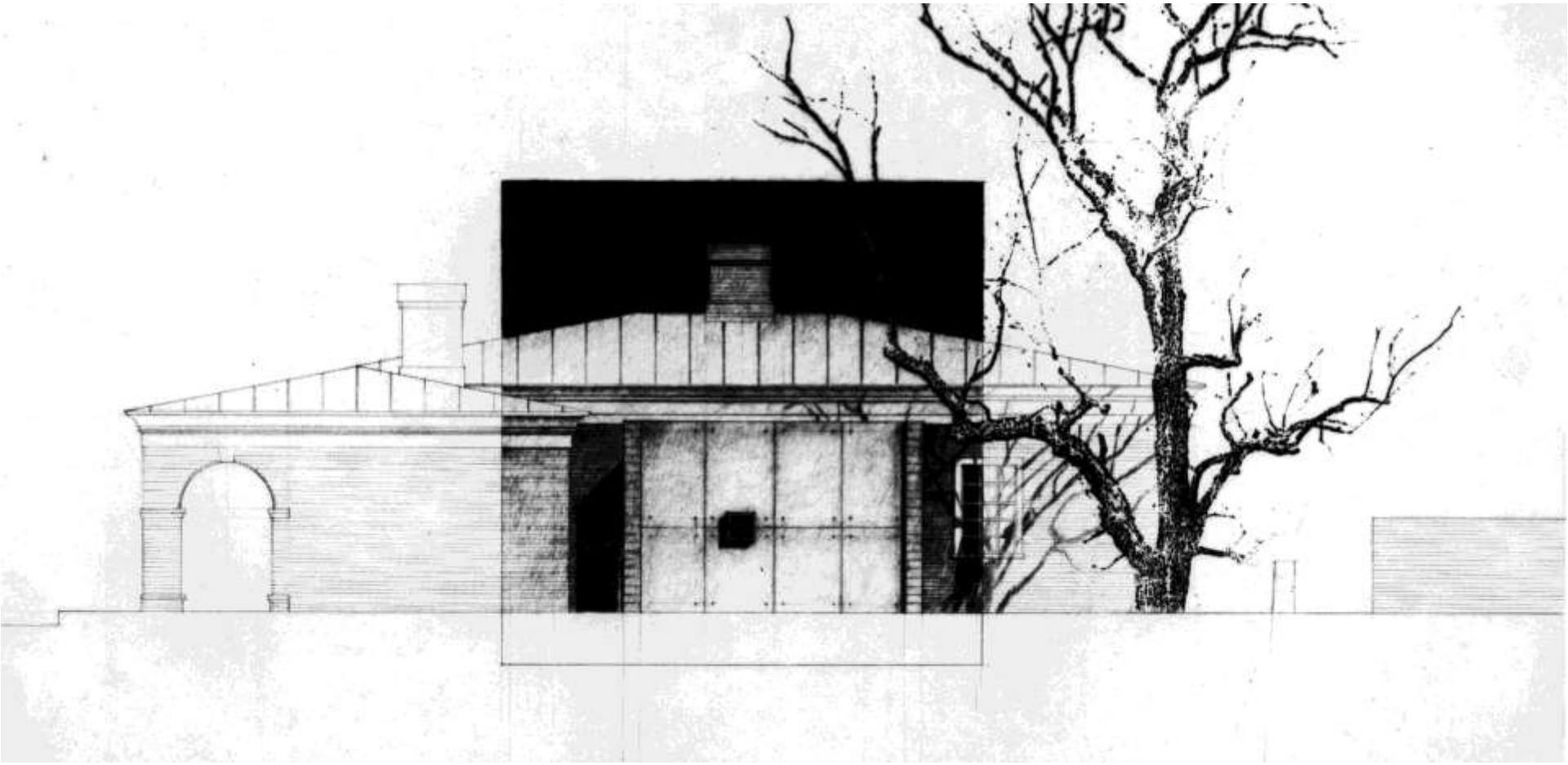
THE REBIRTH OF CLASSICAL ARCHITECTURE

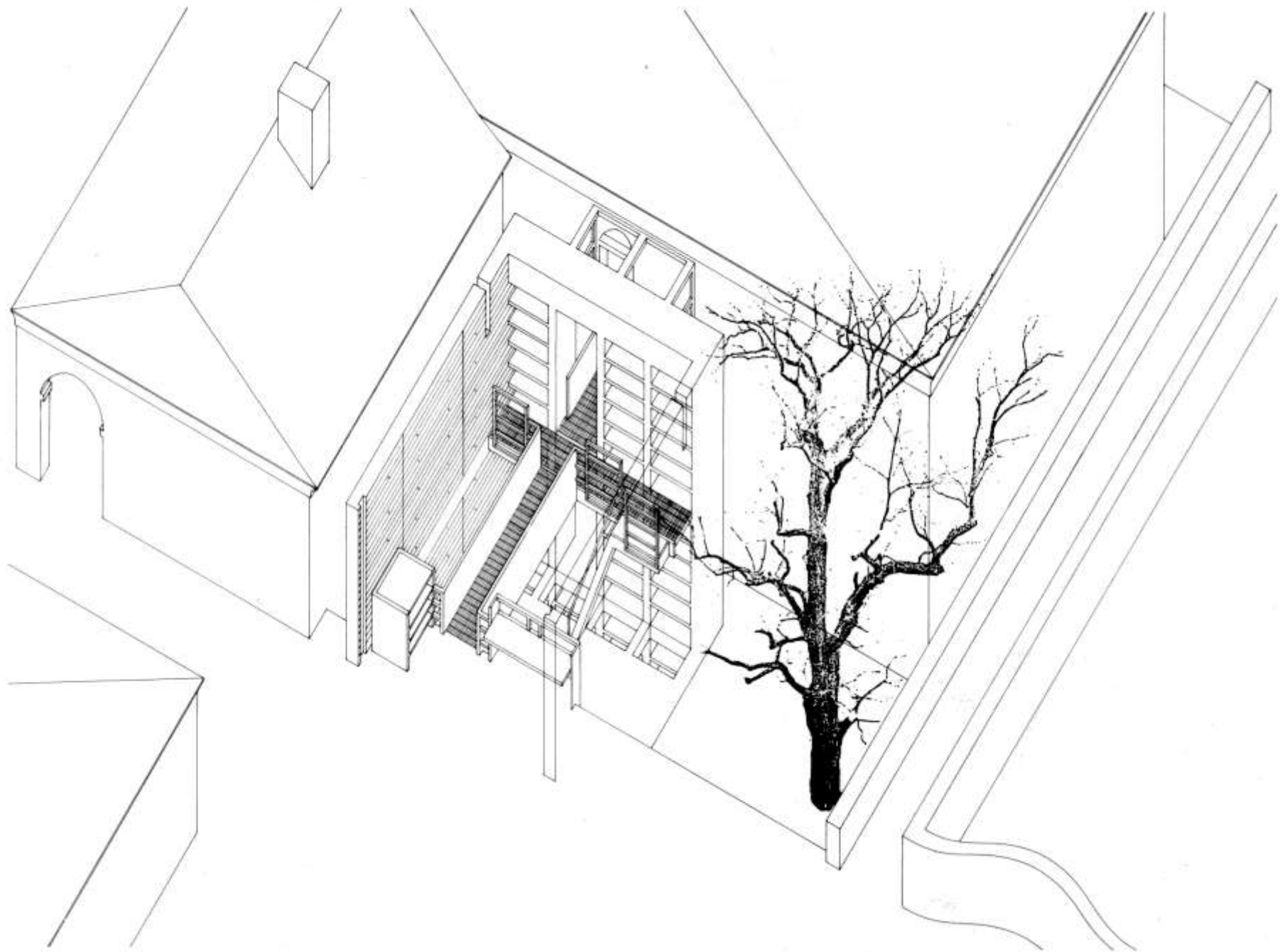
Richard John

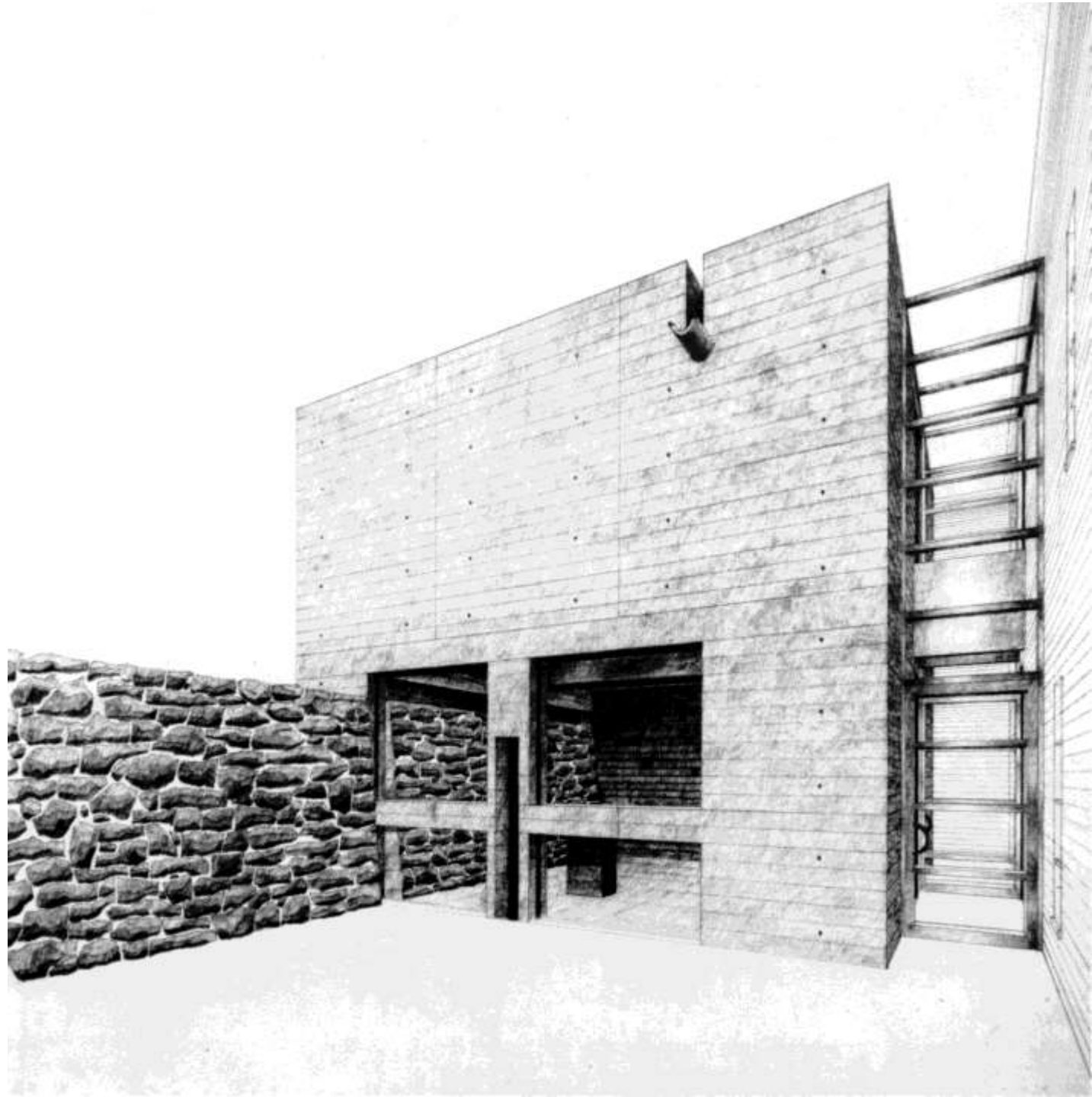


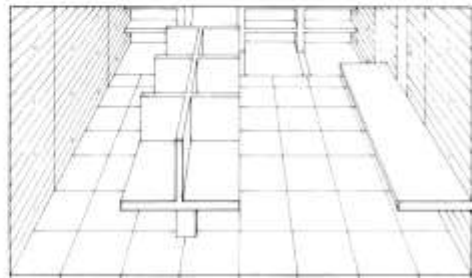
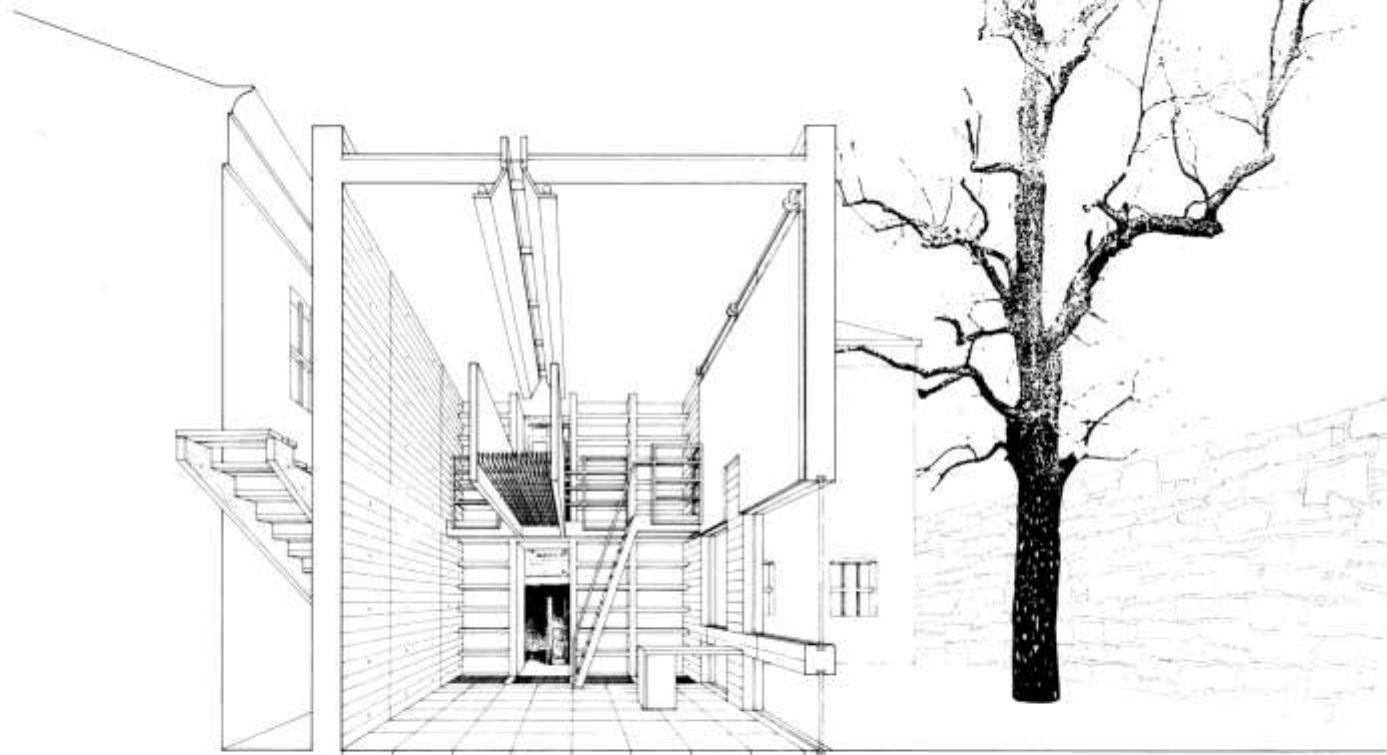




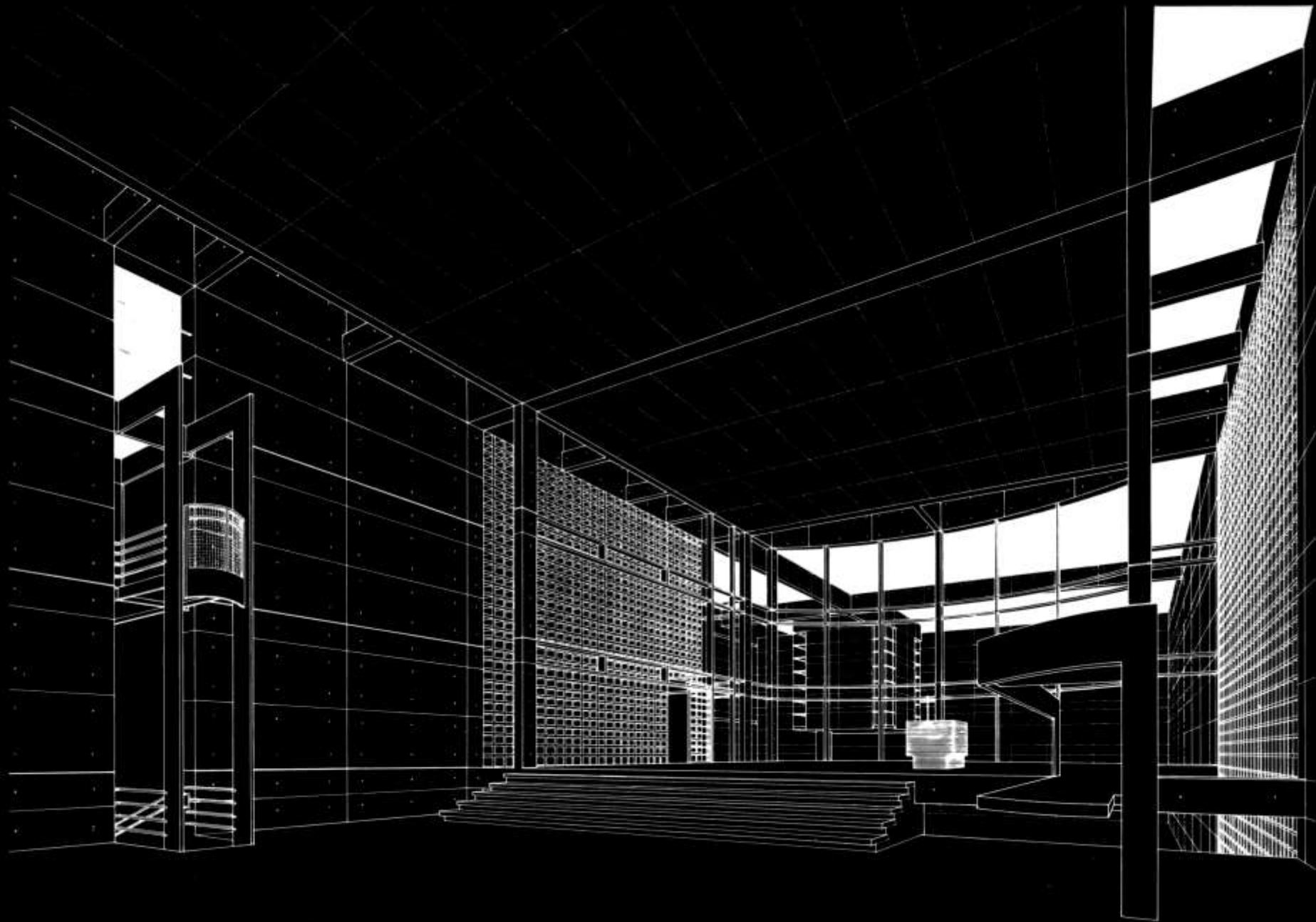


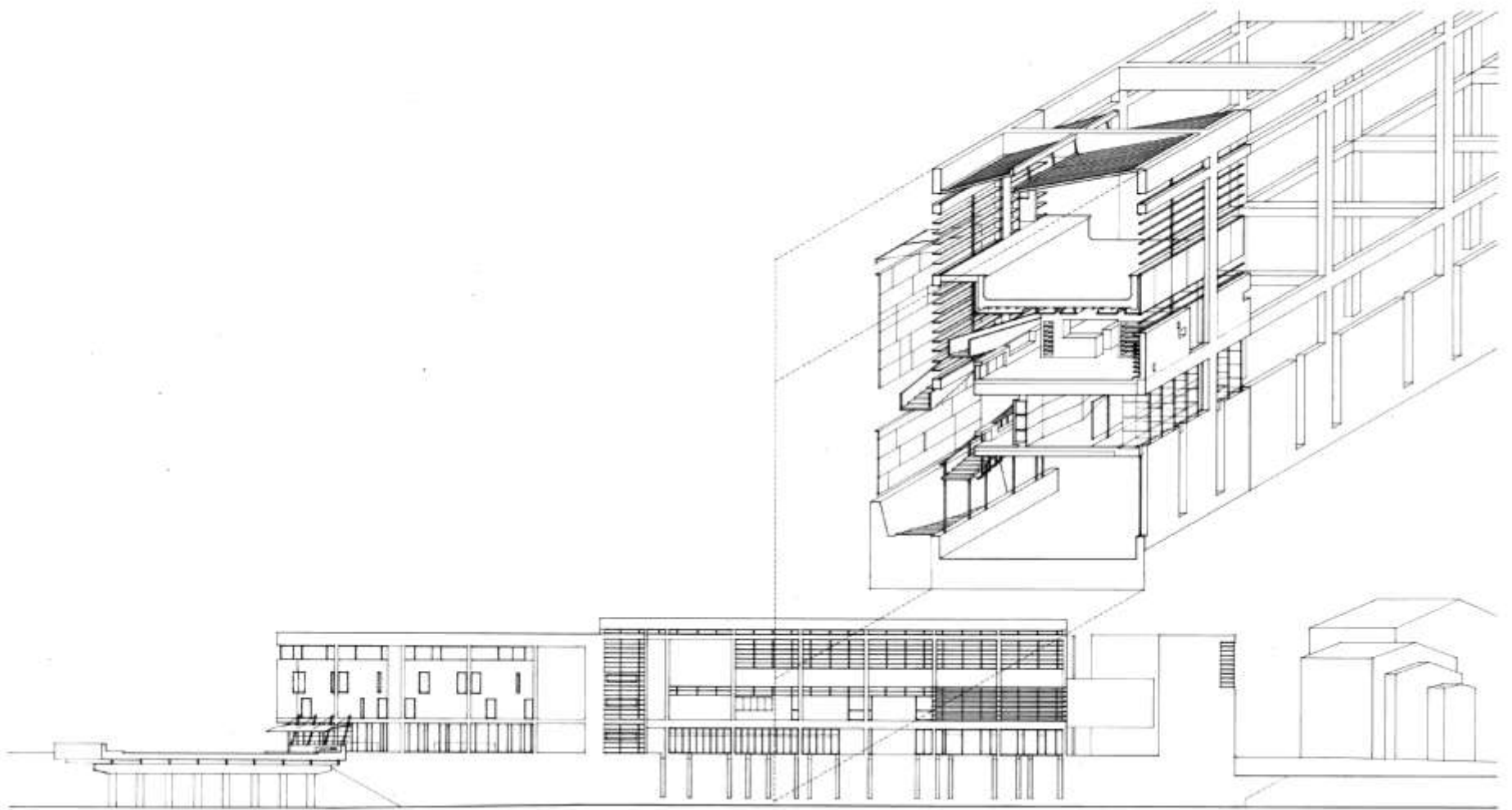


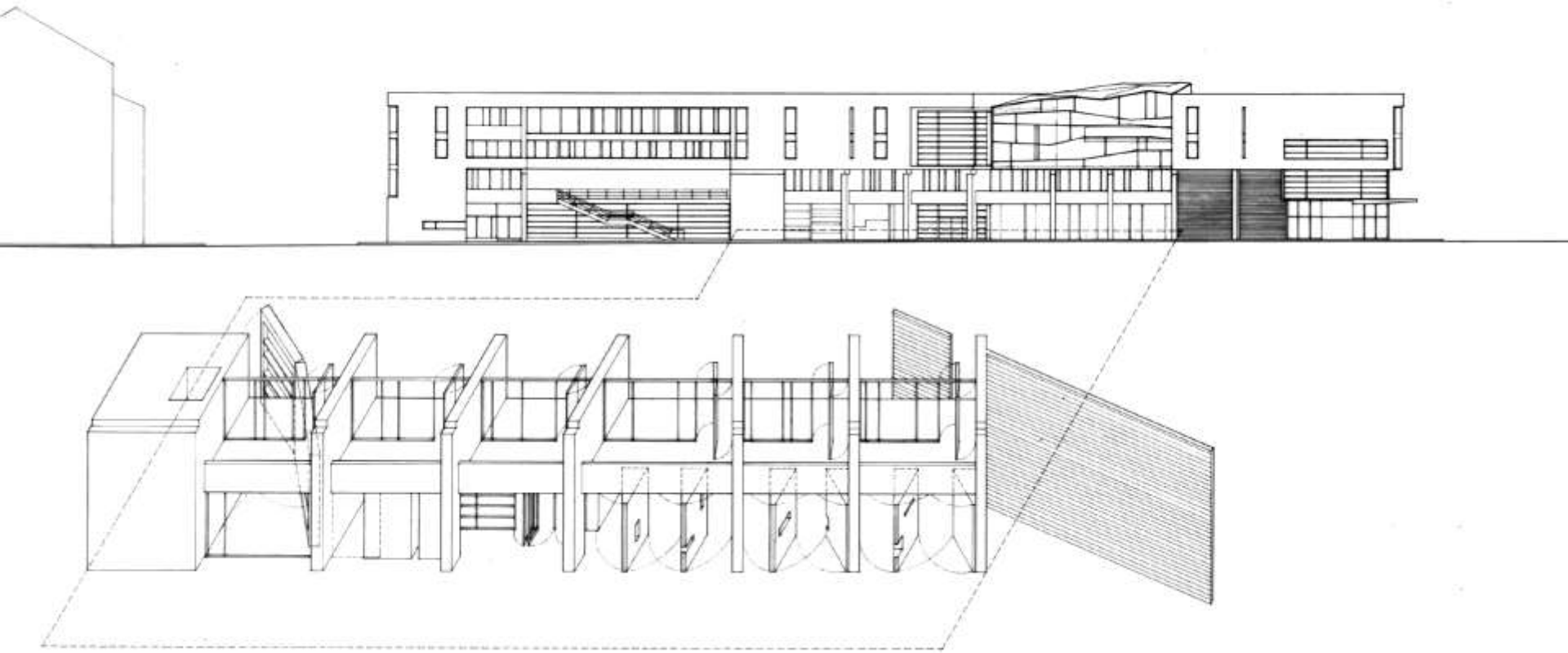


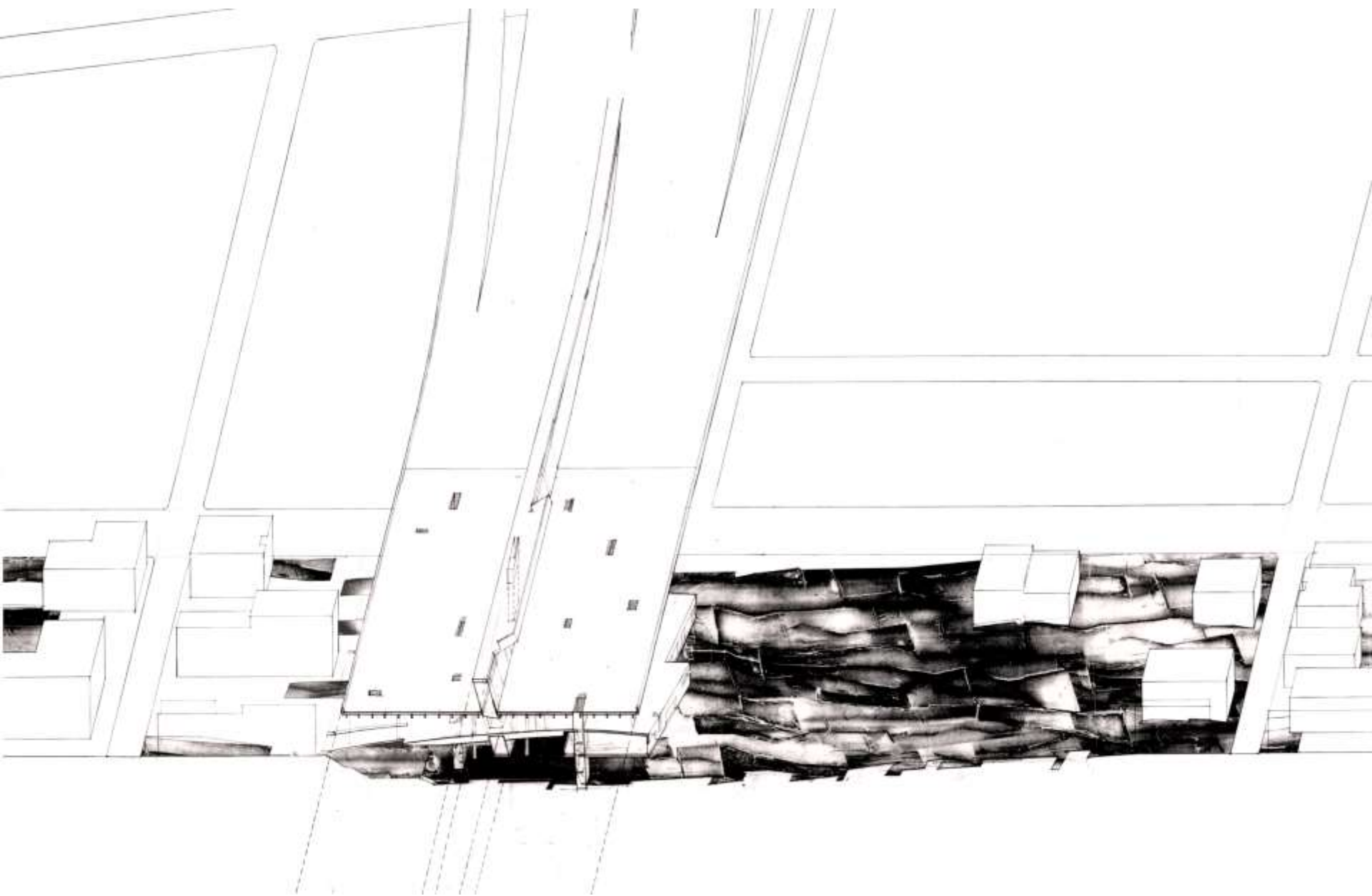


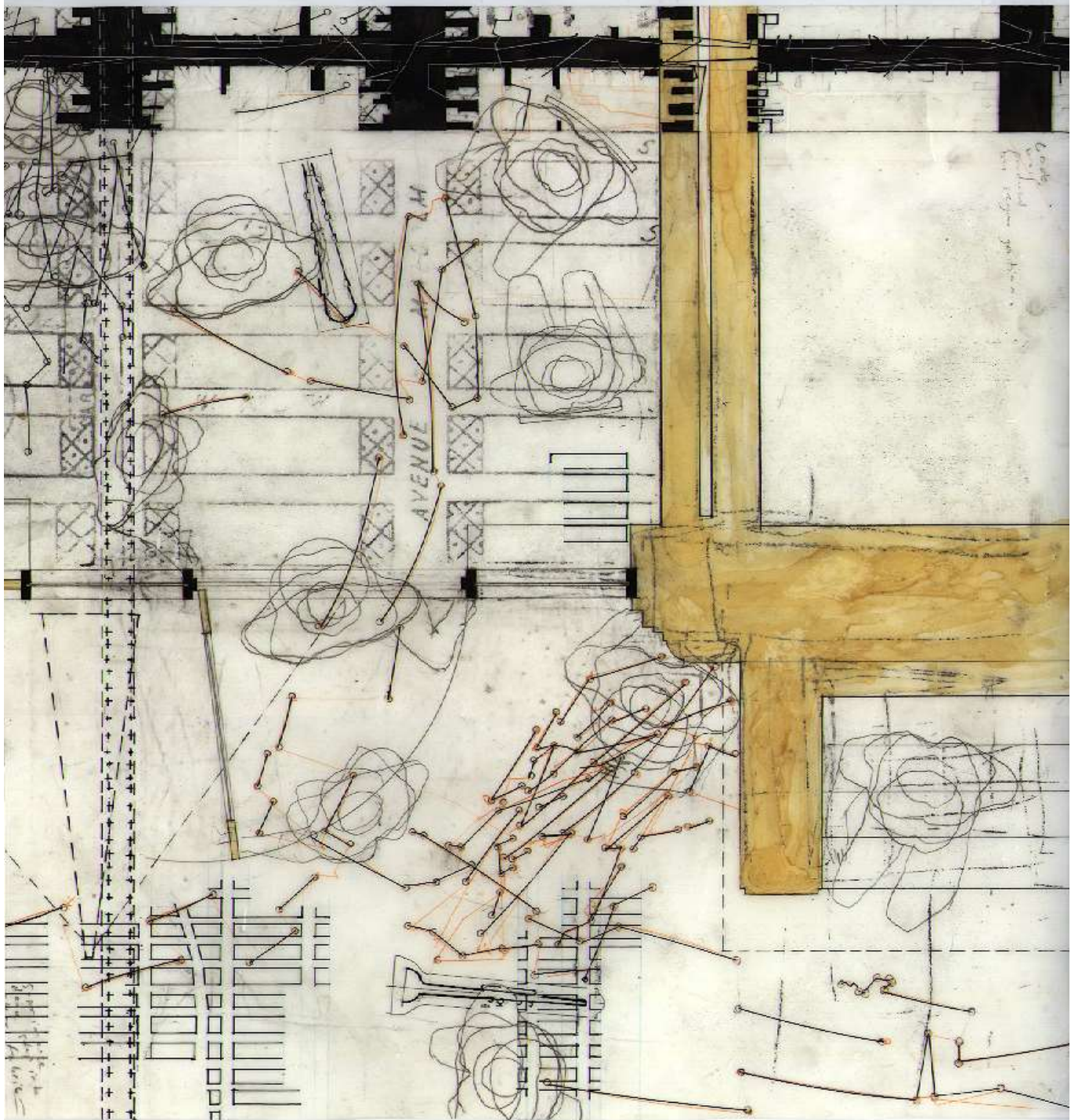


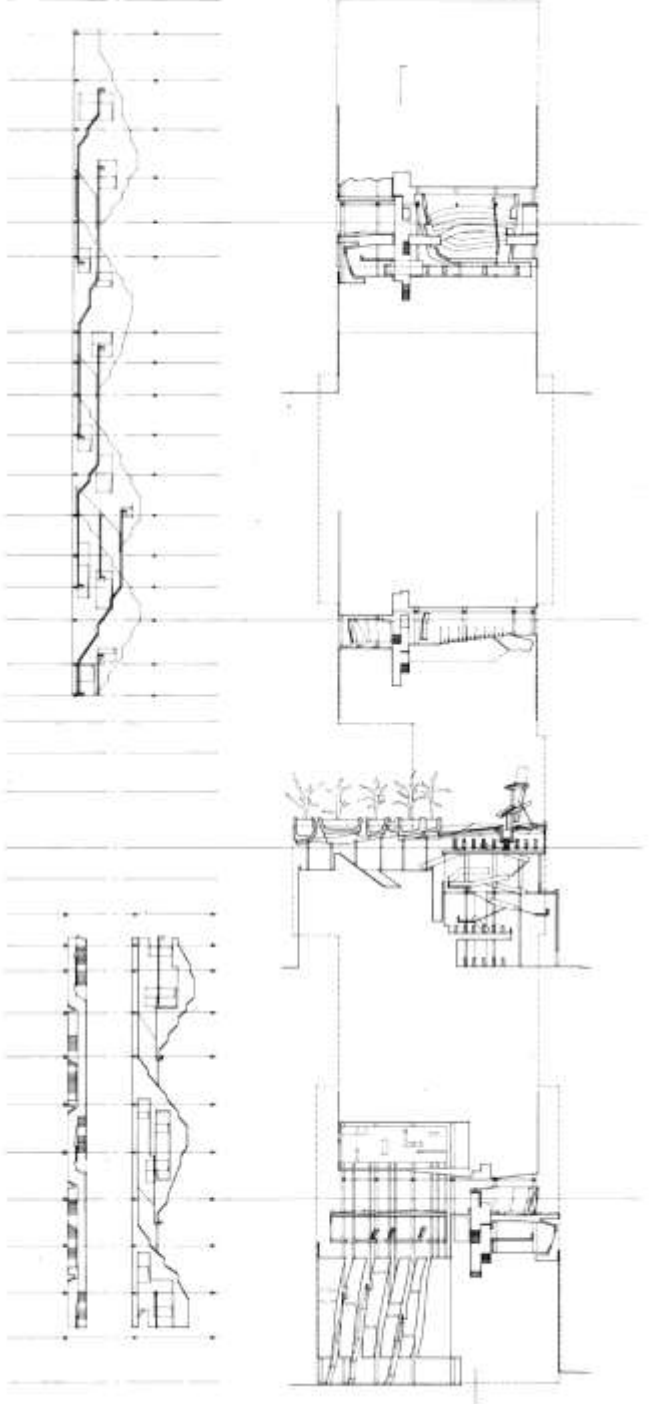


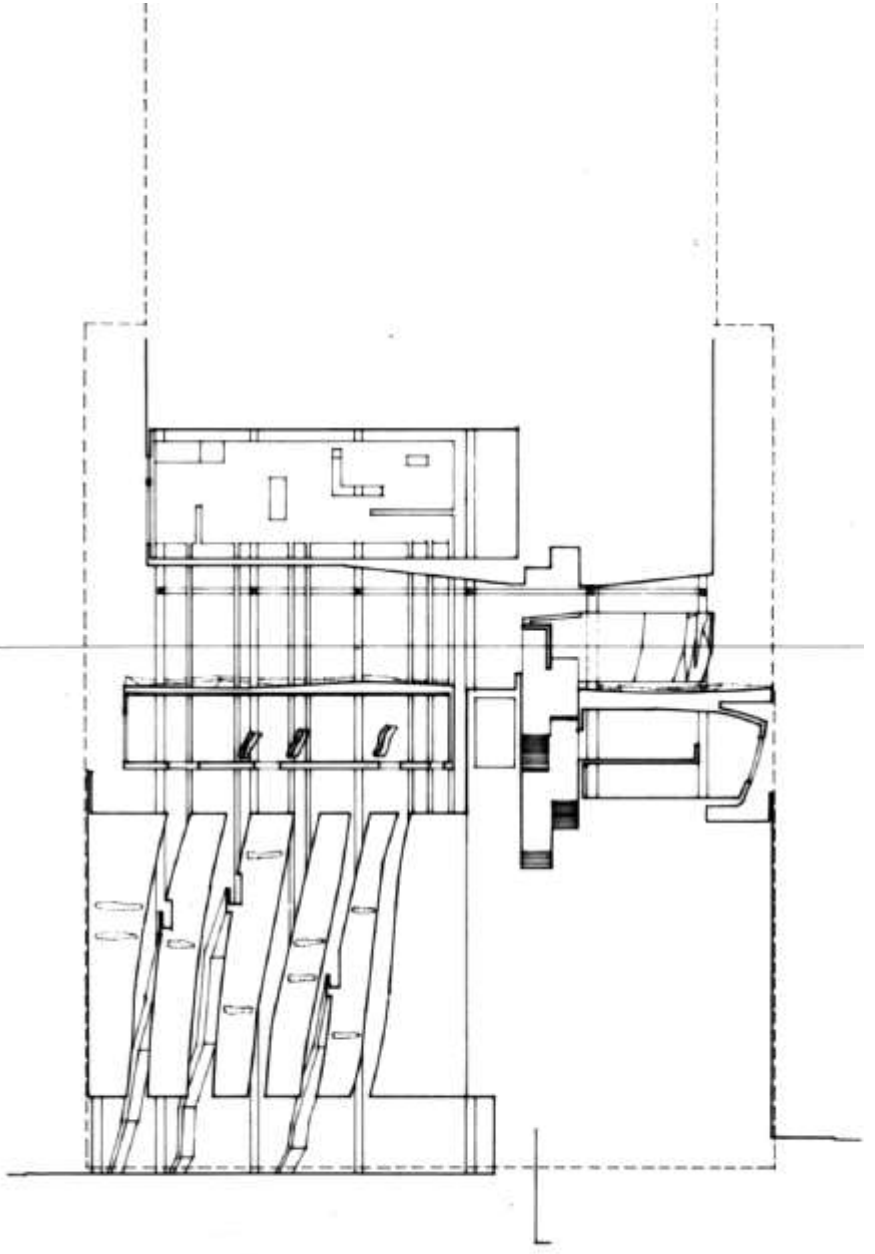
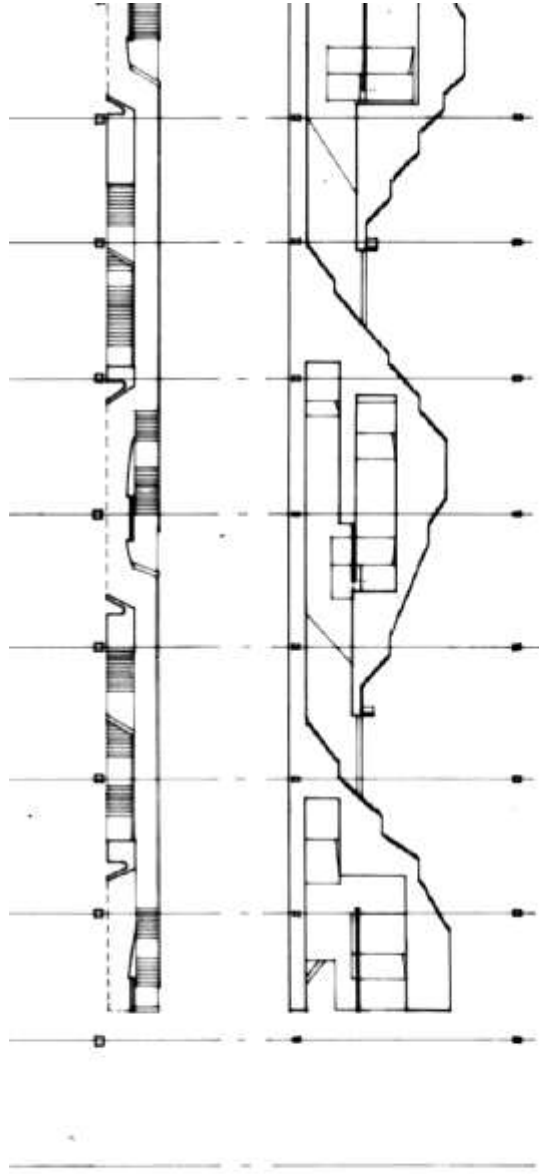


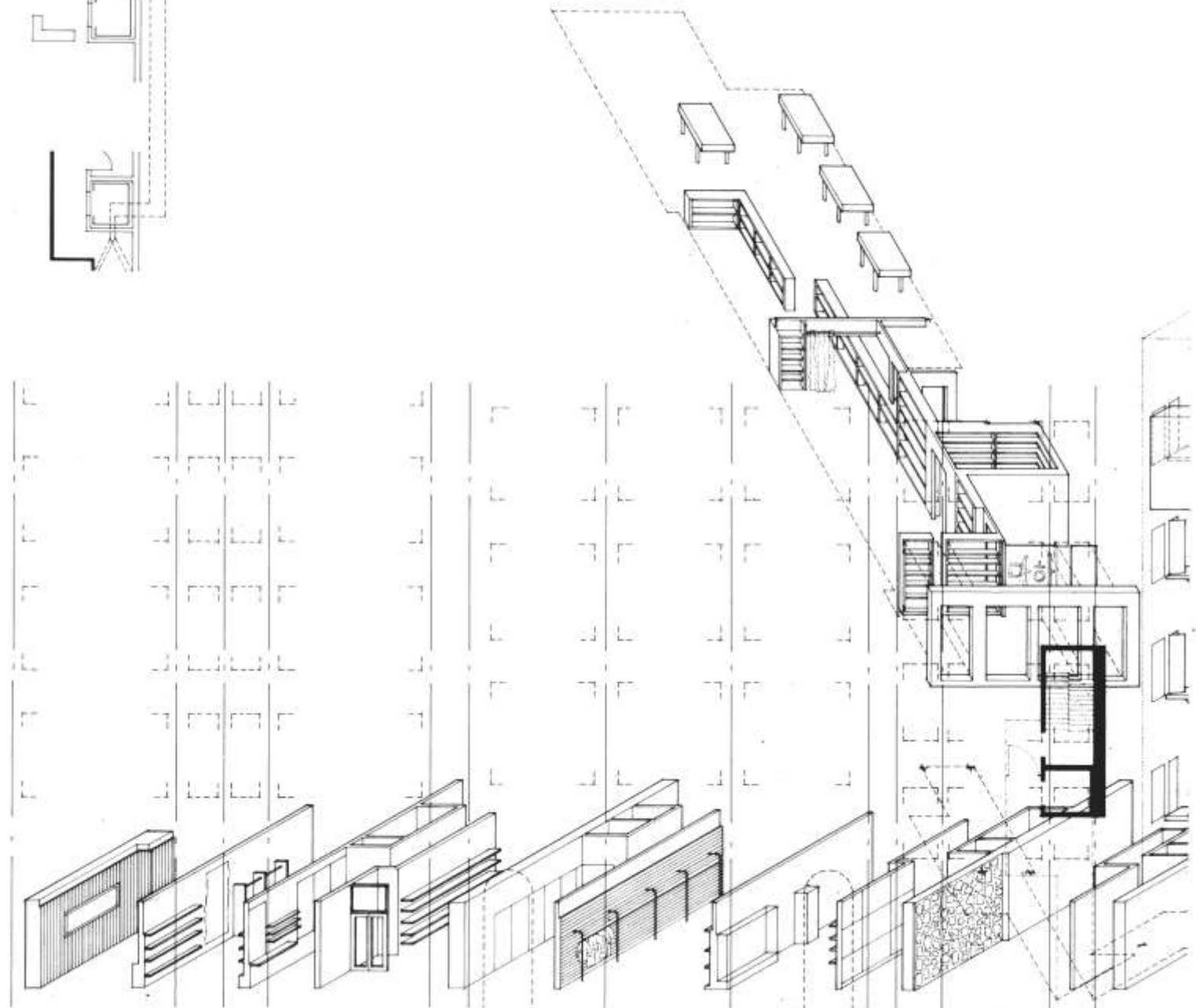
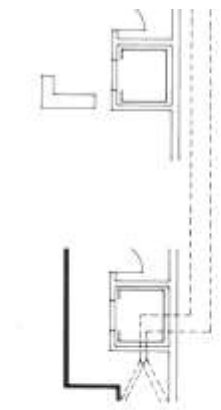


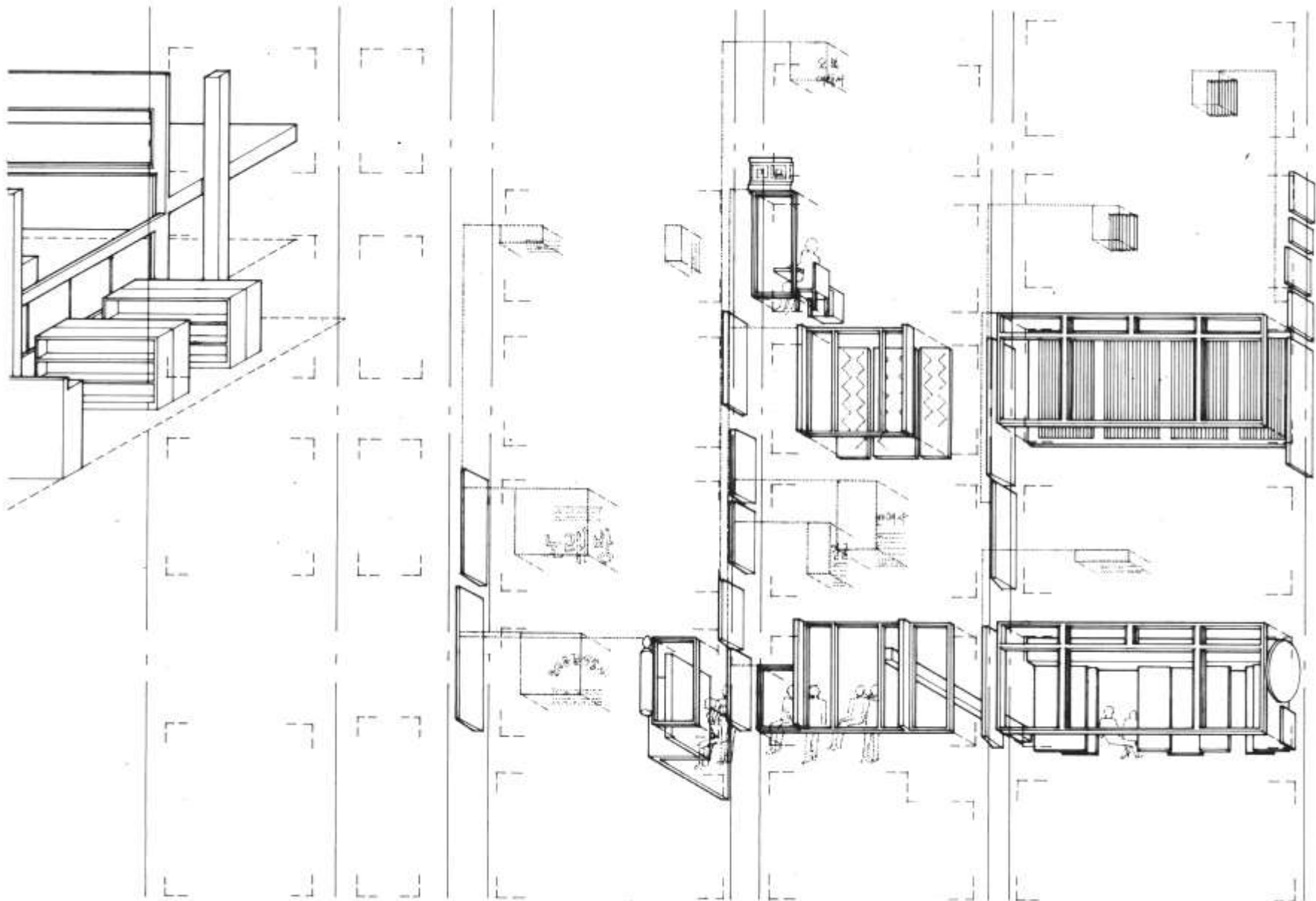


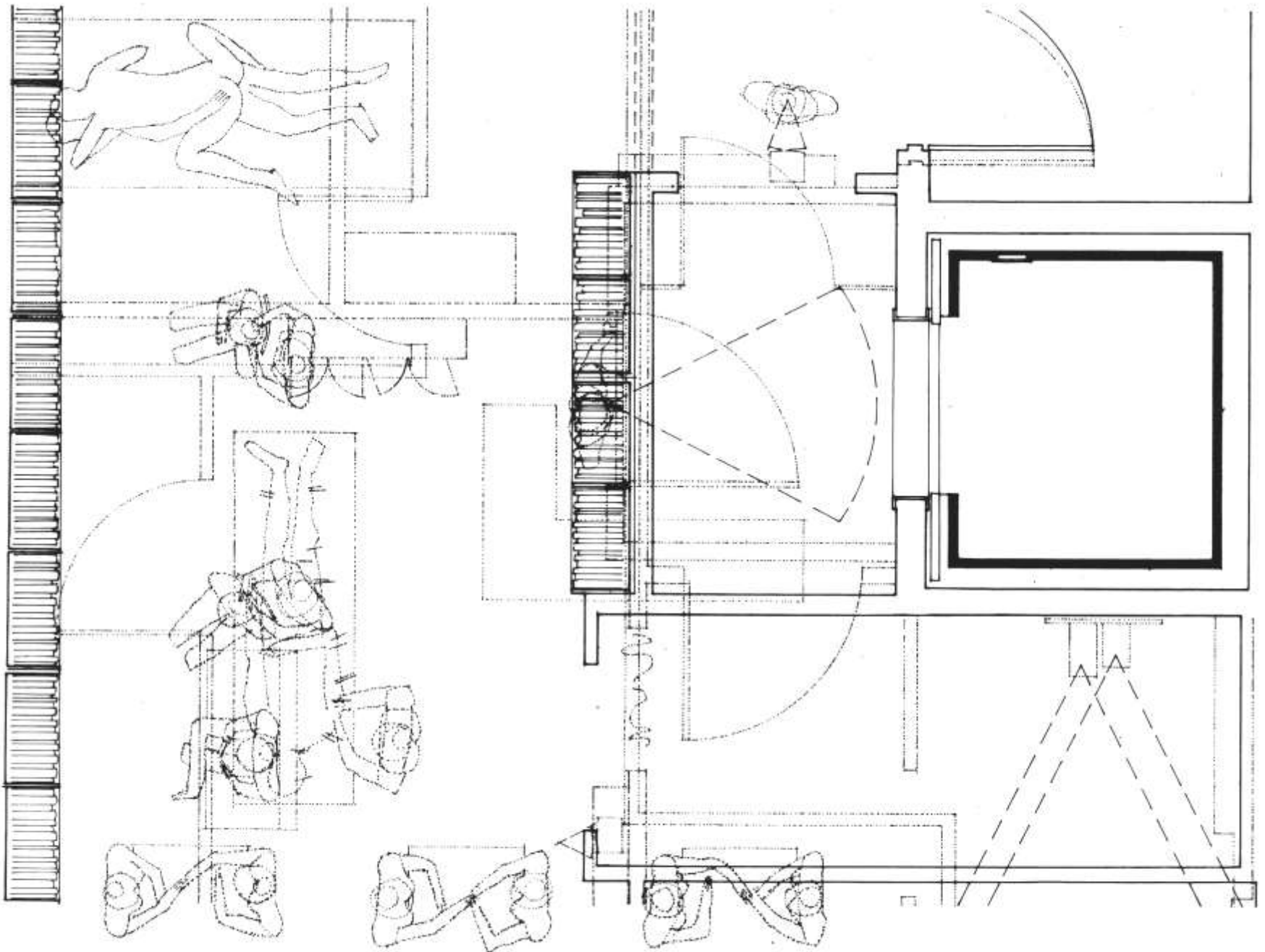


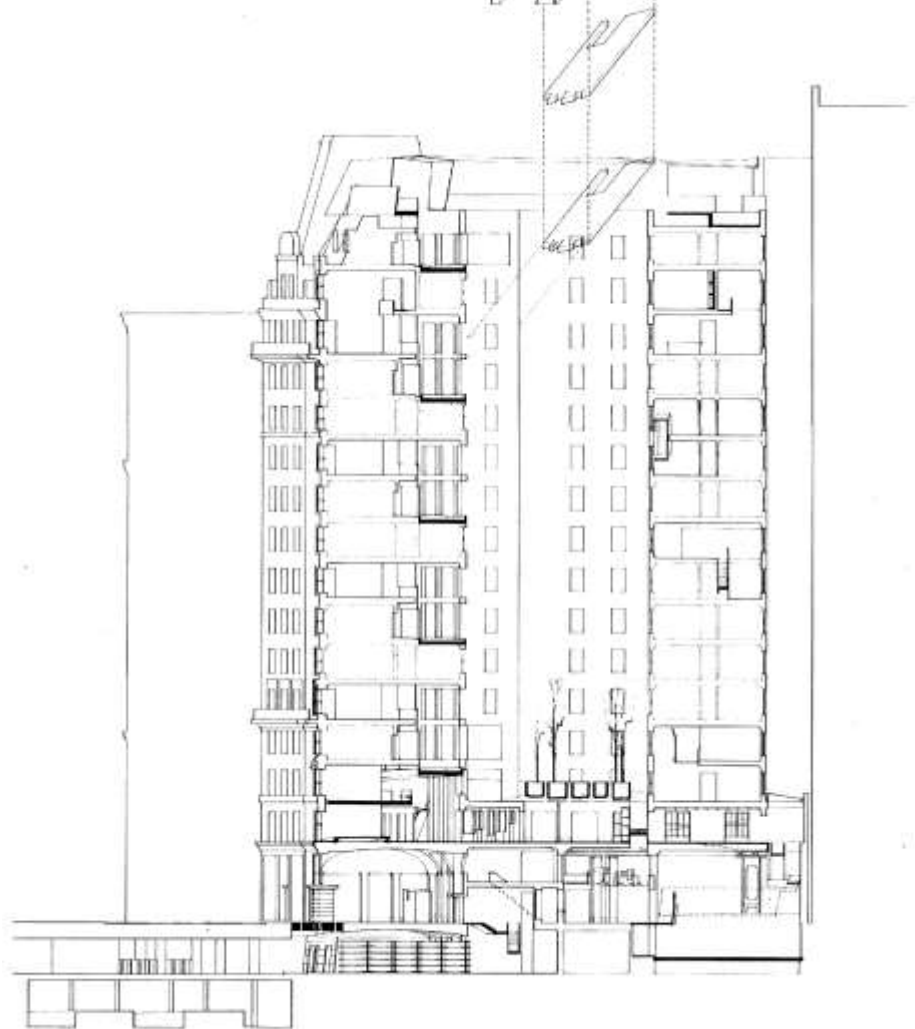
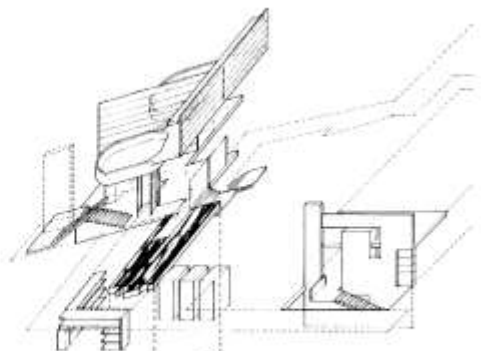


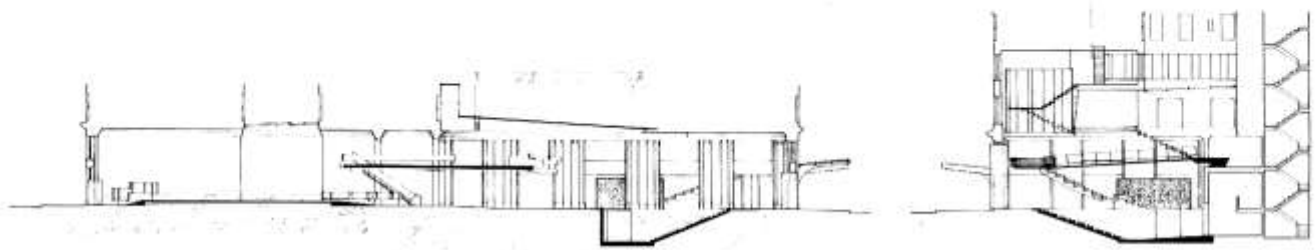
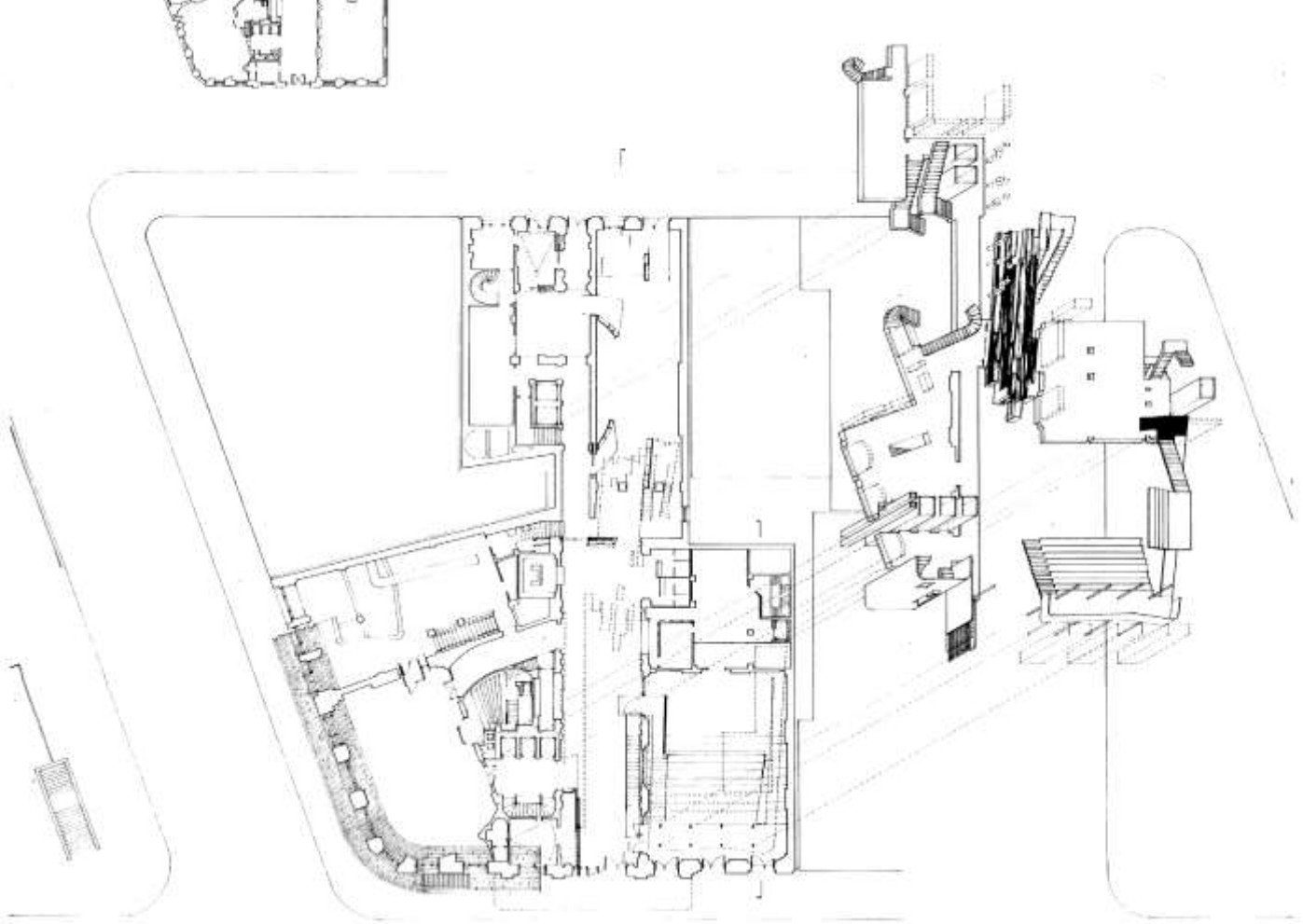


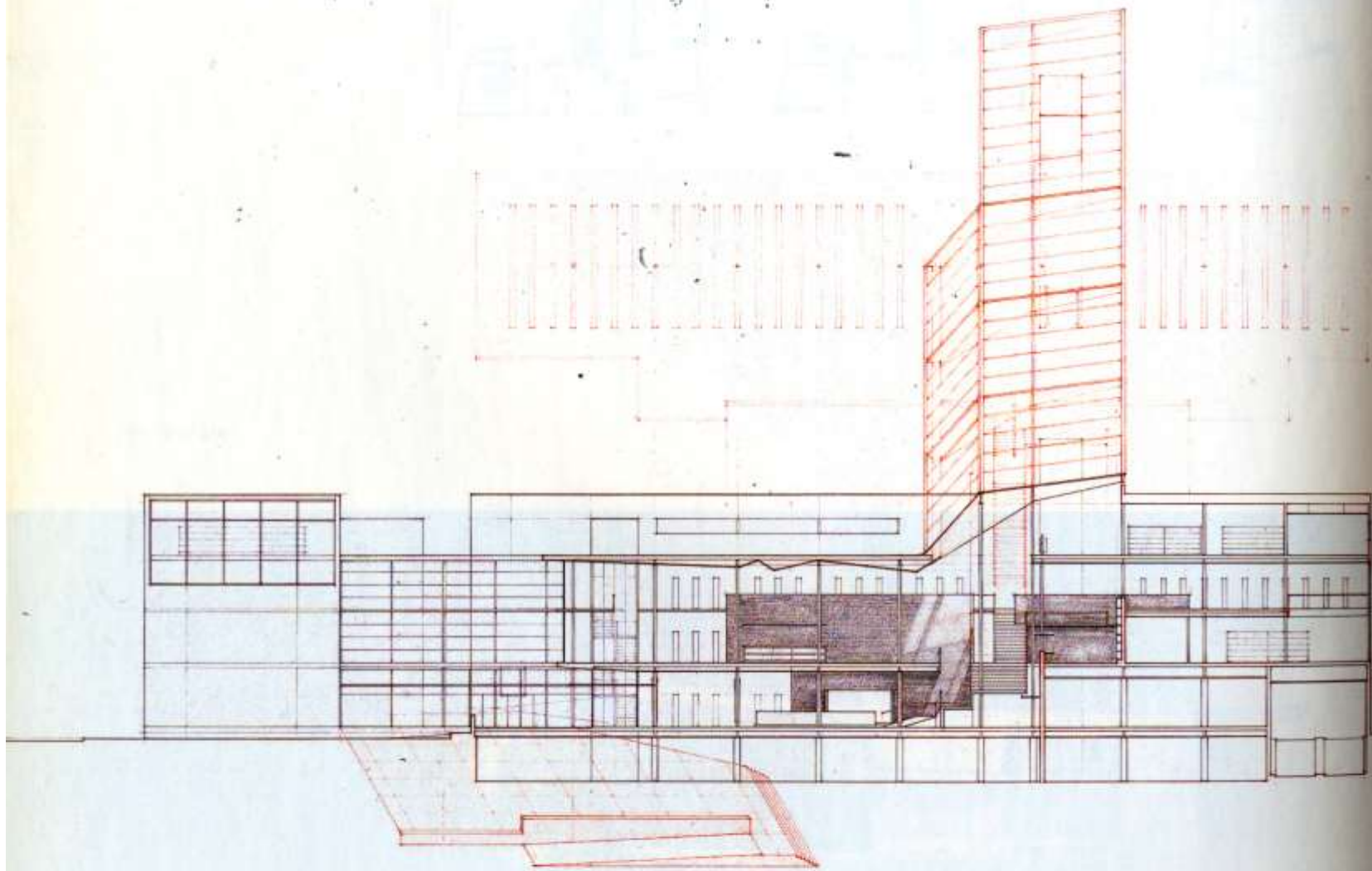




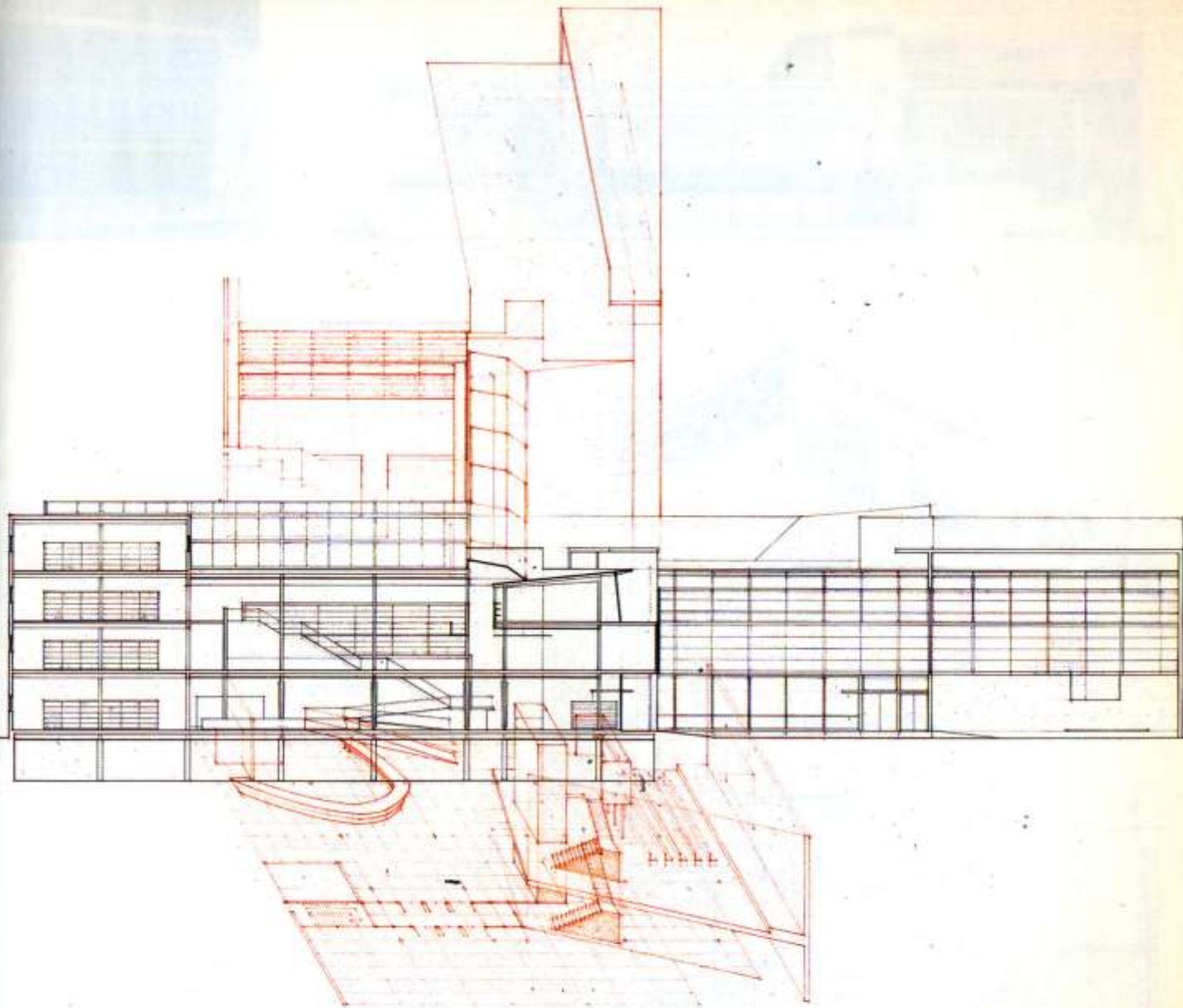






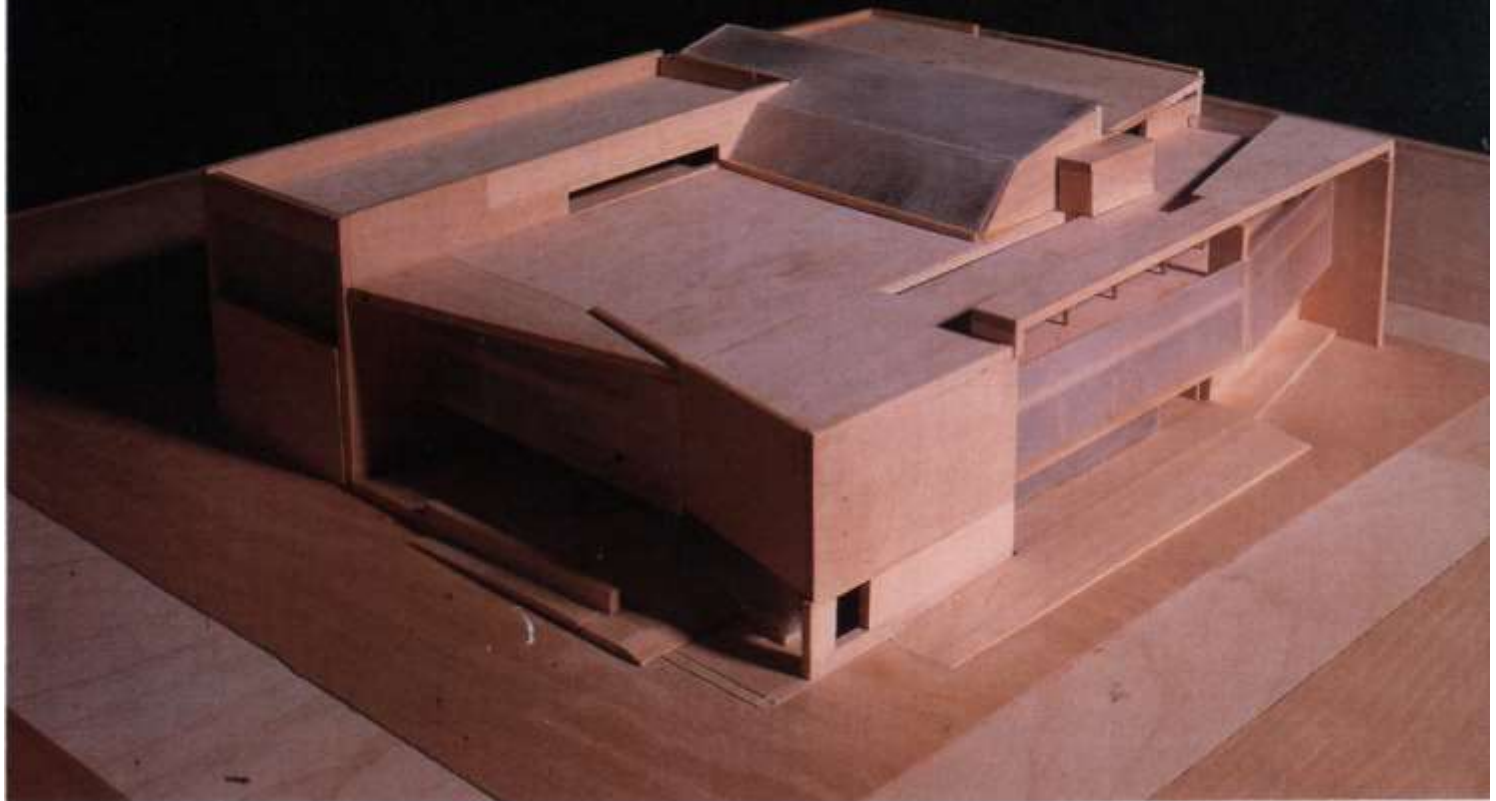
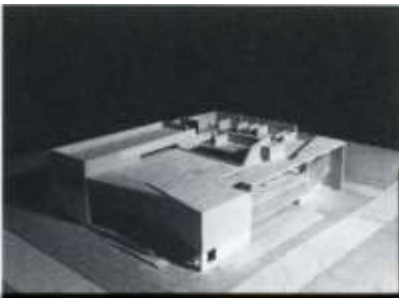


section/elevation—entrance
podium, and main stair

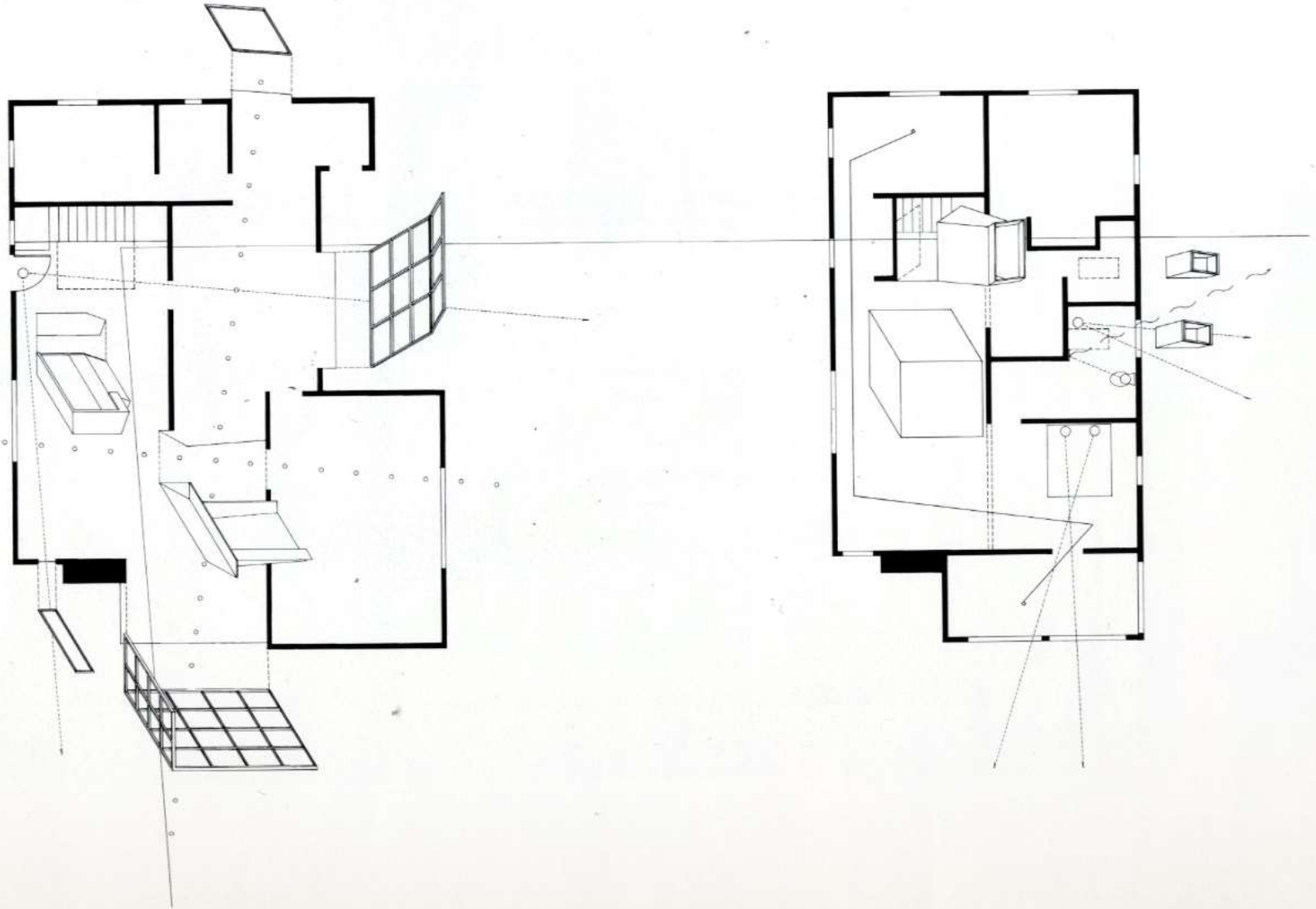


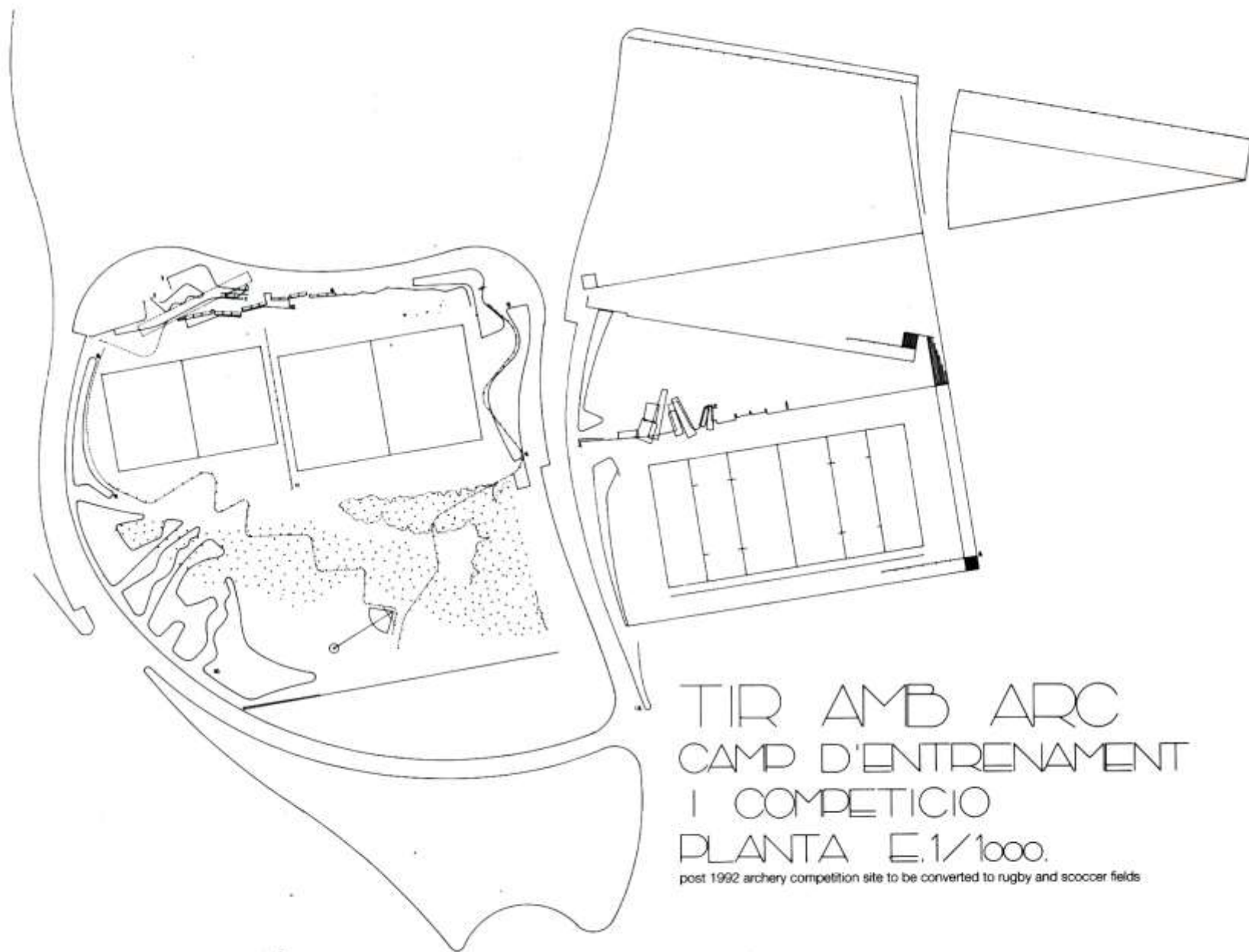
section/elevation—
reference/information section and
public meeting room

reconfigurations



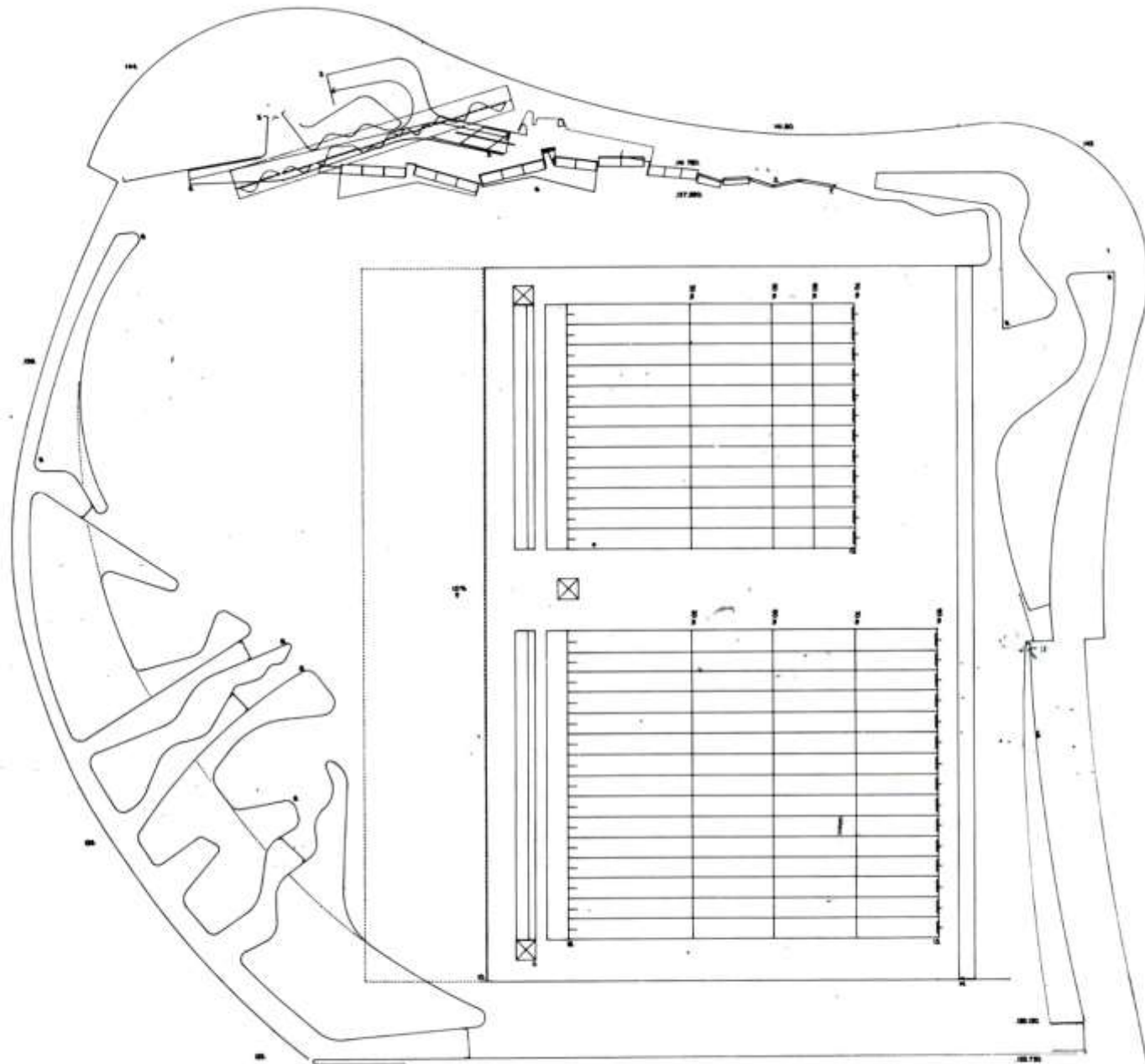
concept diagrams



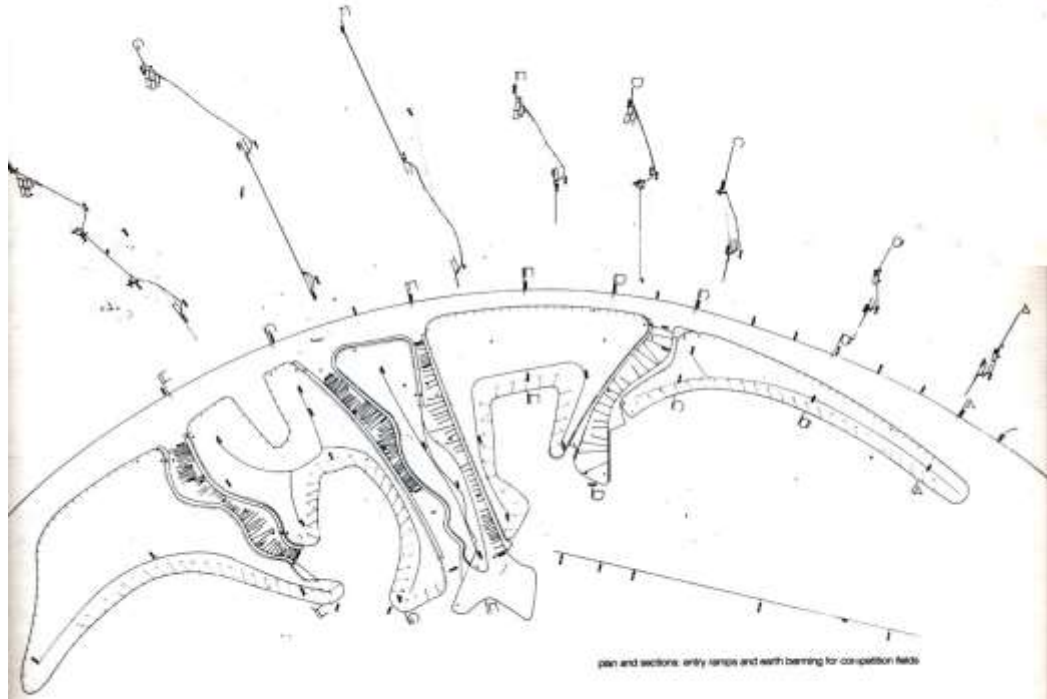
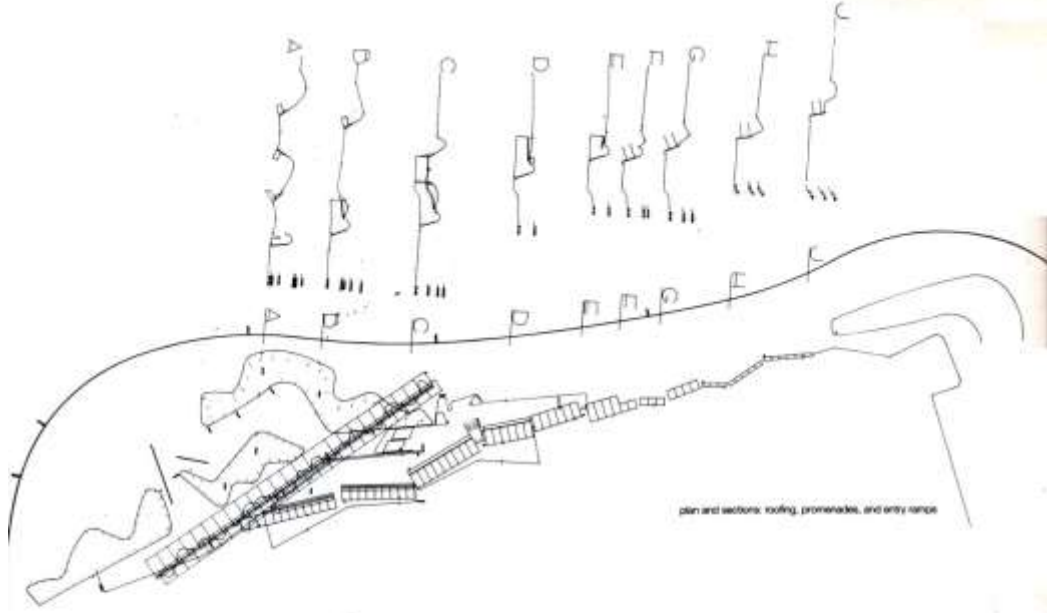


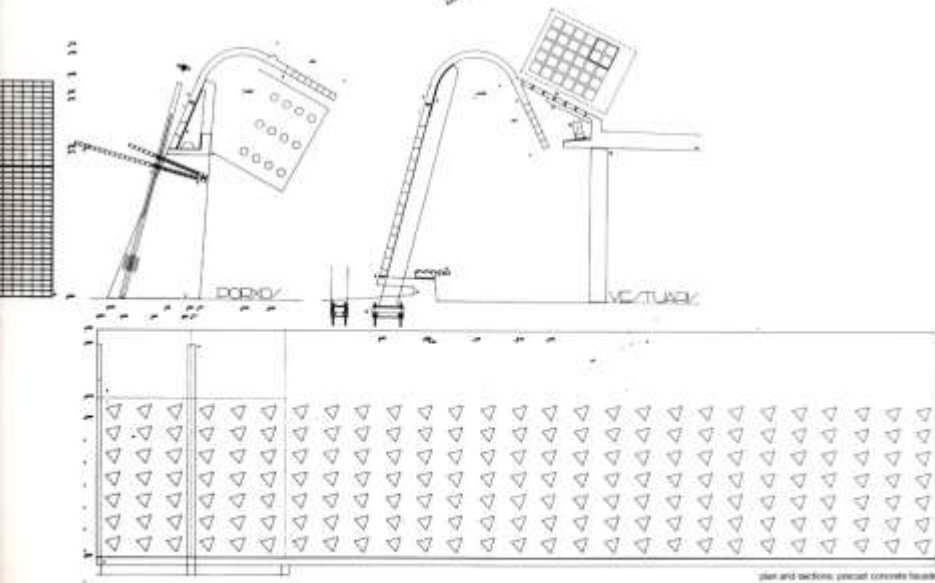
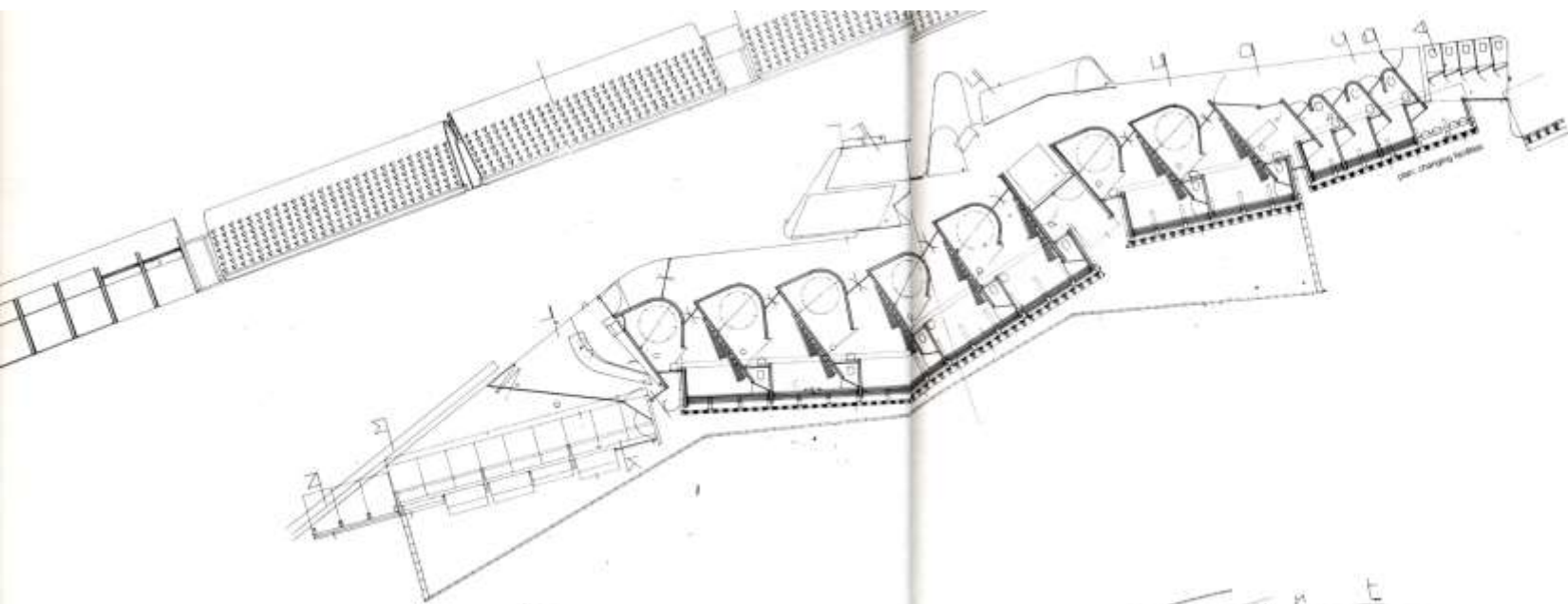
TIR AMB ARC
CAMP D'ENTRENAMENT
I COMPETICIO
PLANTA E.1/1000.

post 1992 archery competition site to be converted to rugby and soccer fields

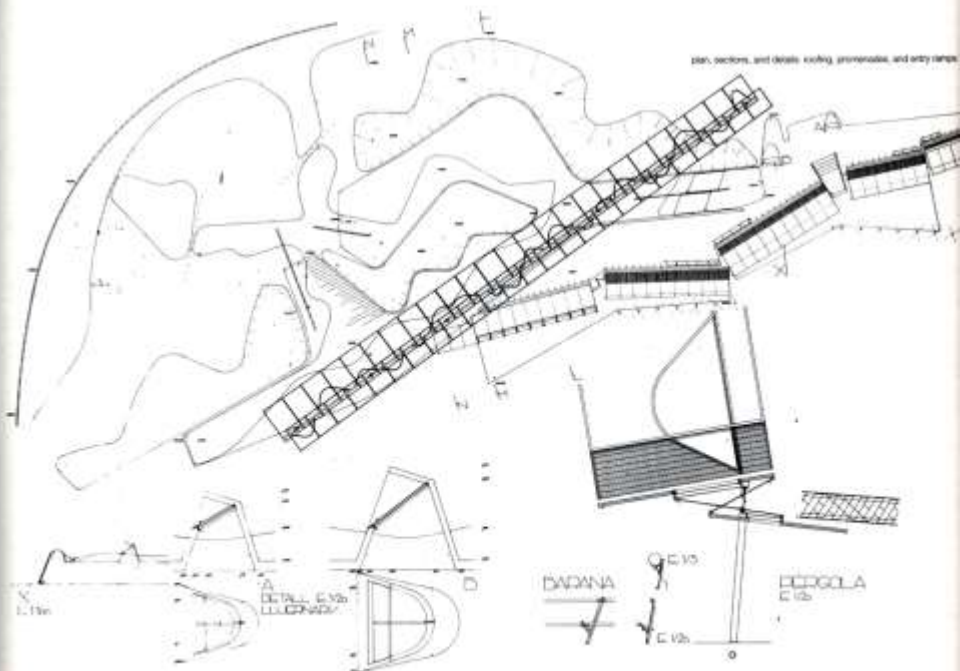


general plan: competition field



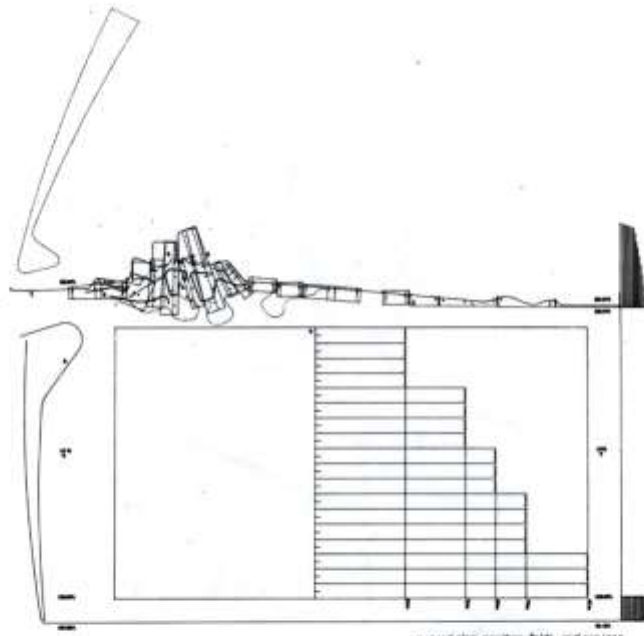


OLYMPIC ARCHERY RANGE

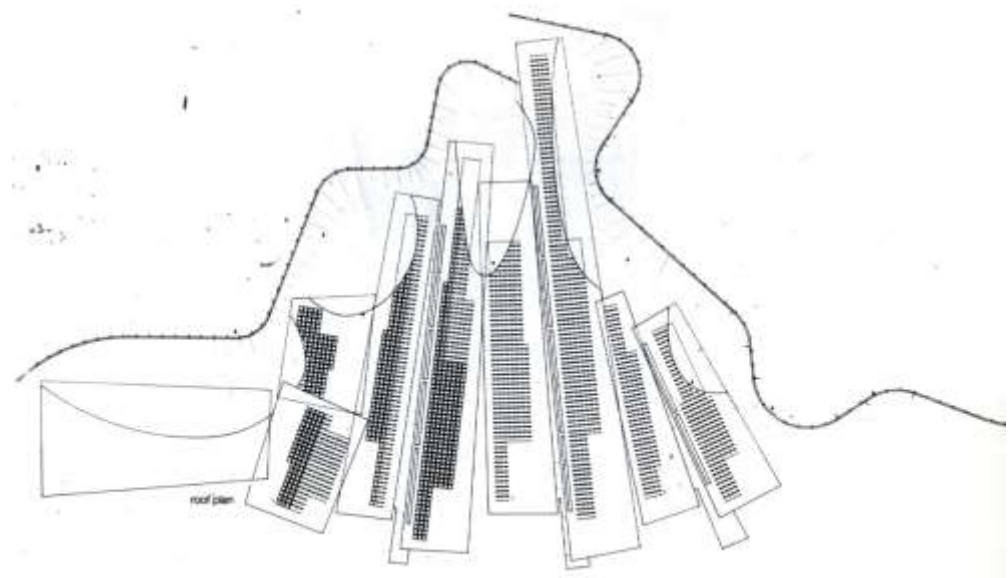


OLYMPIC ARCHERY RANGE

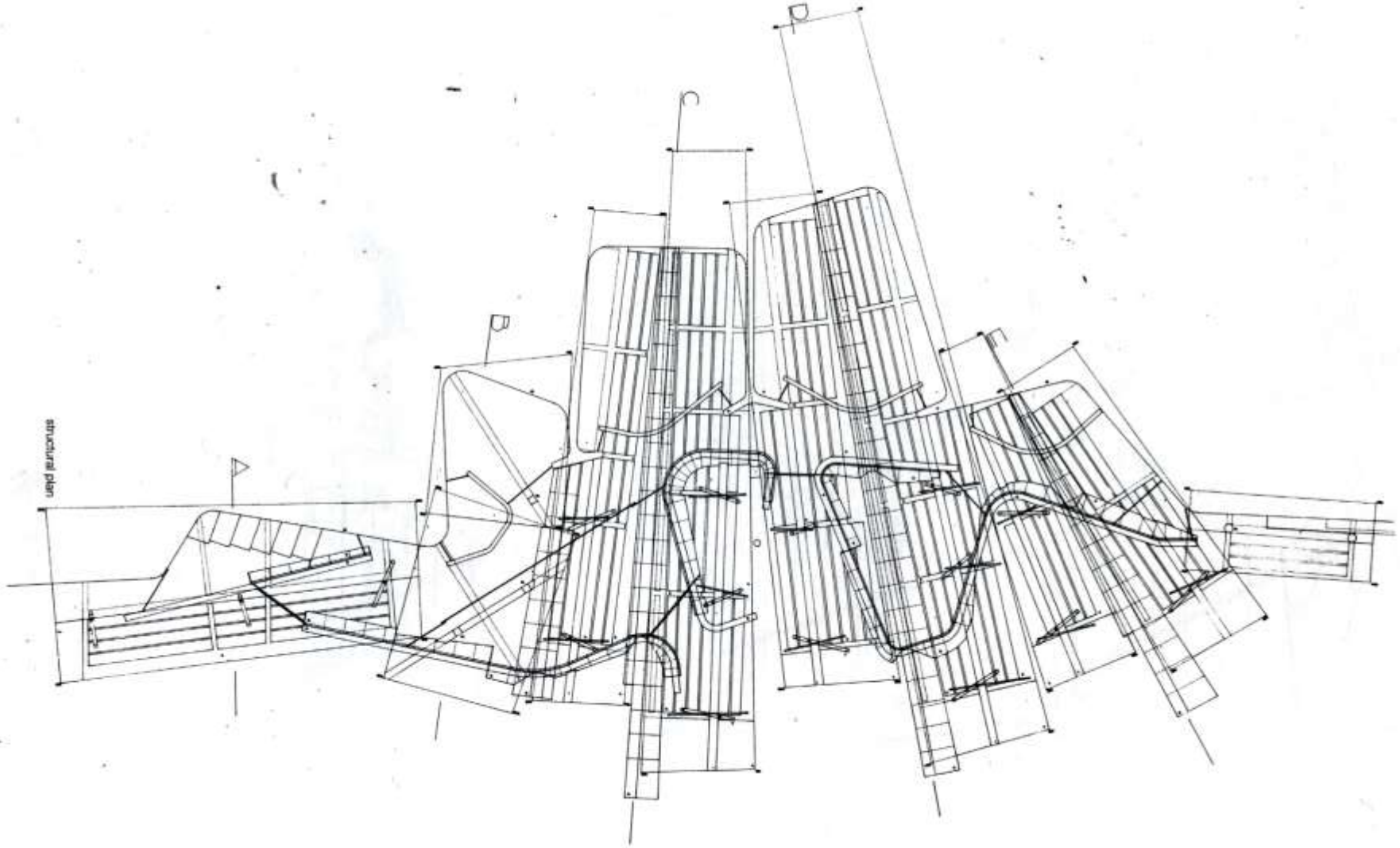
OLYMPIC ARCHERY TRAINING RANGE
Barcelona, 1989-90

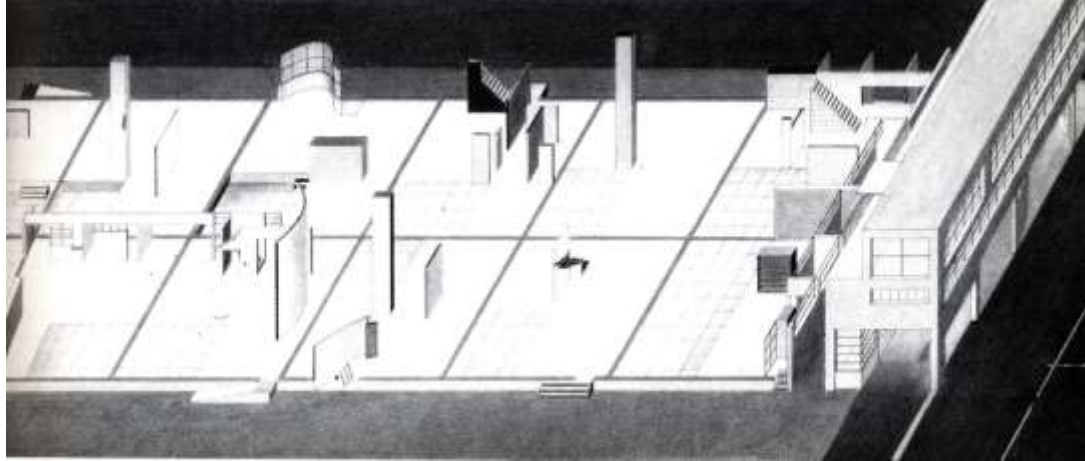
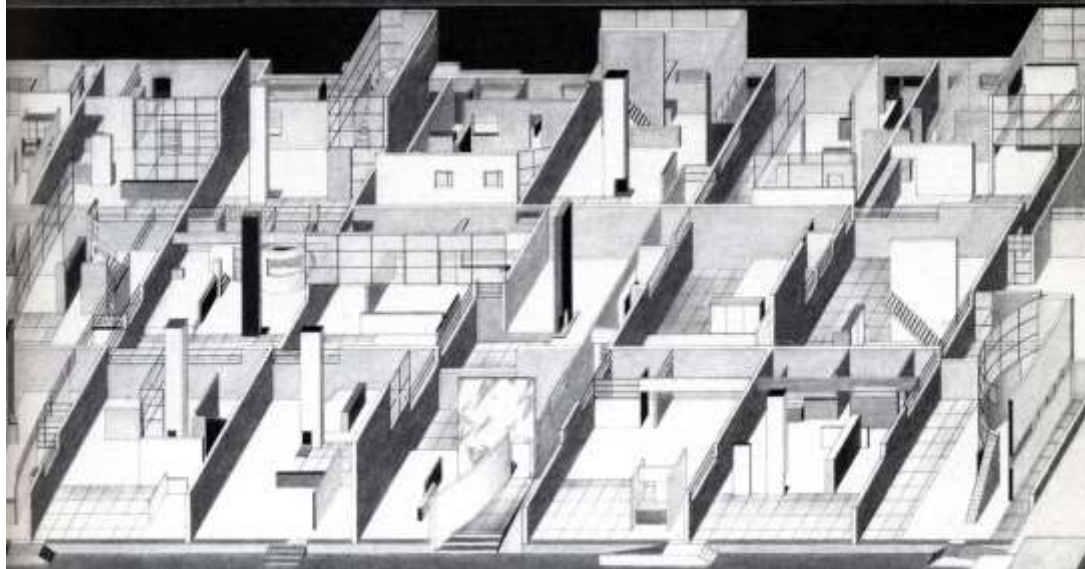
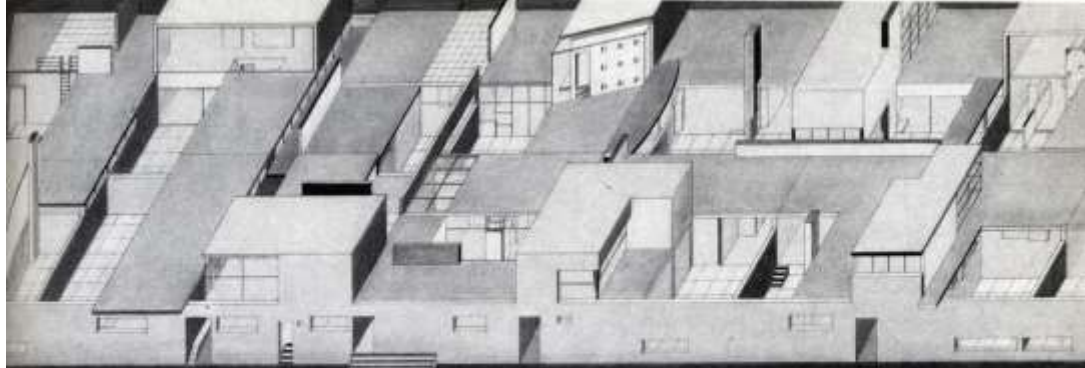


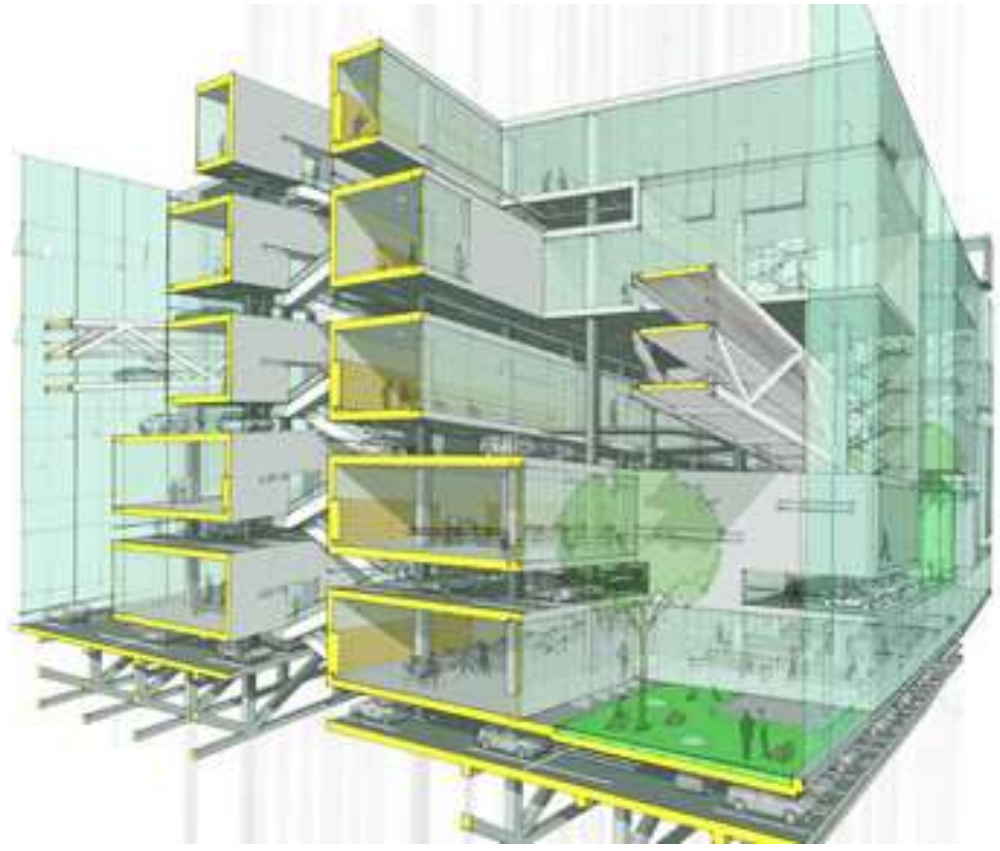
general plan: porches, fields, and services

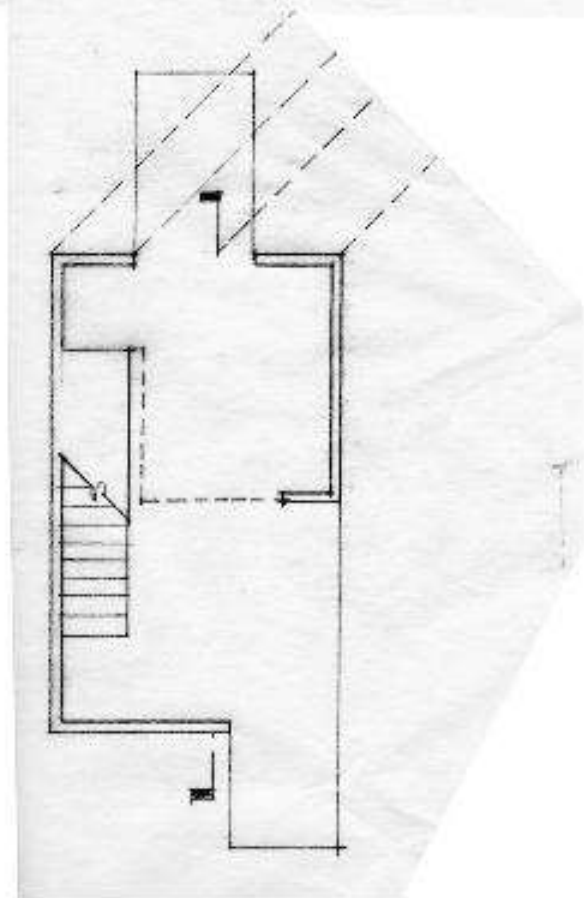
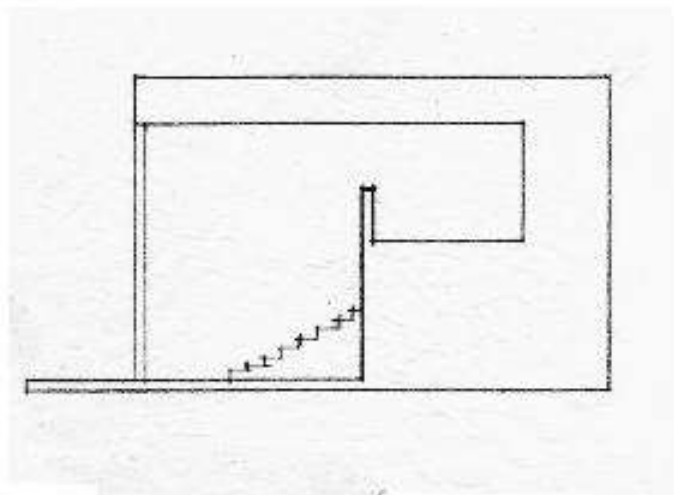


roof plan

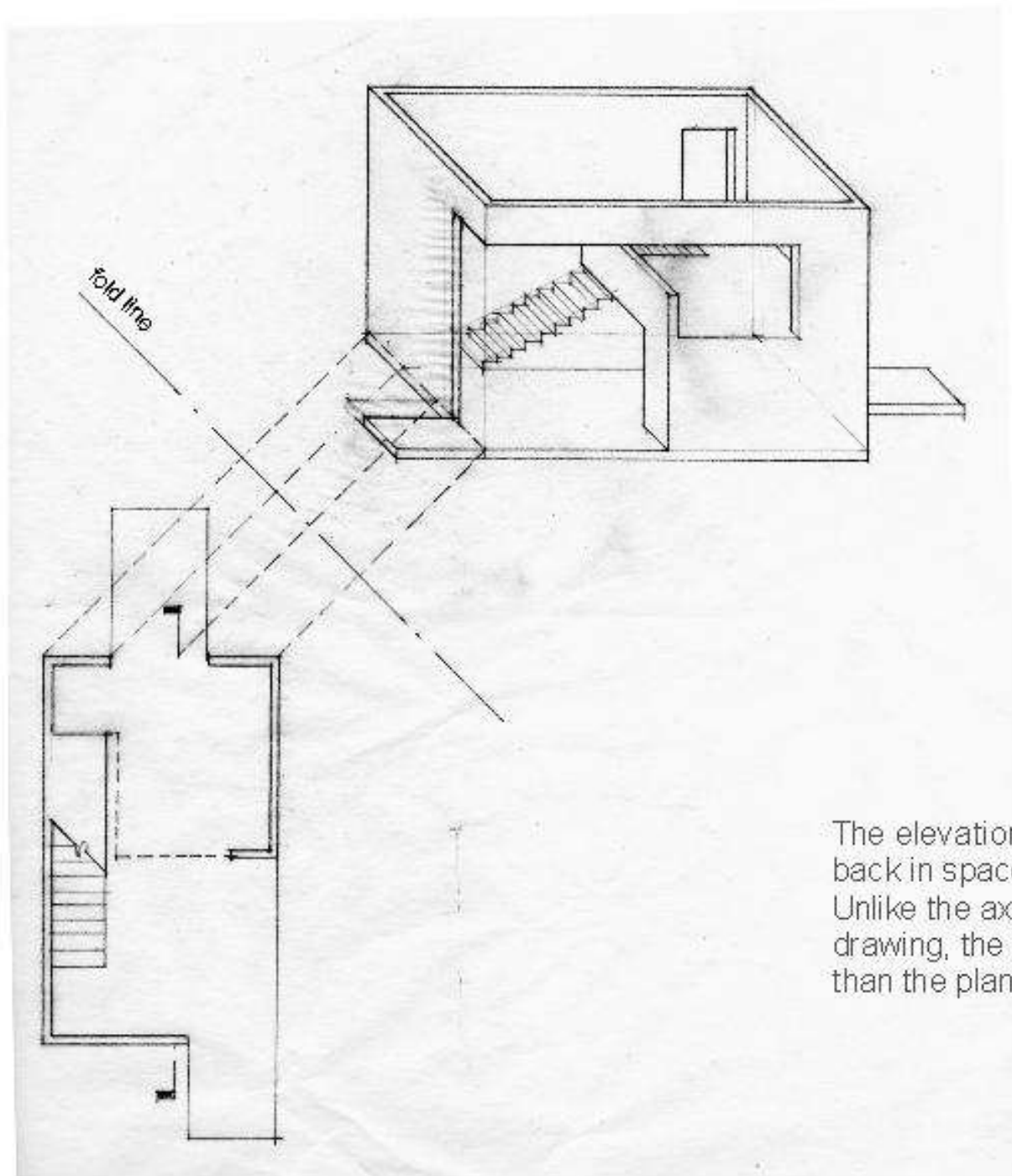




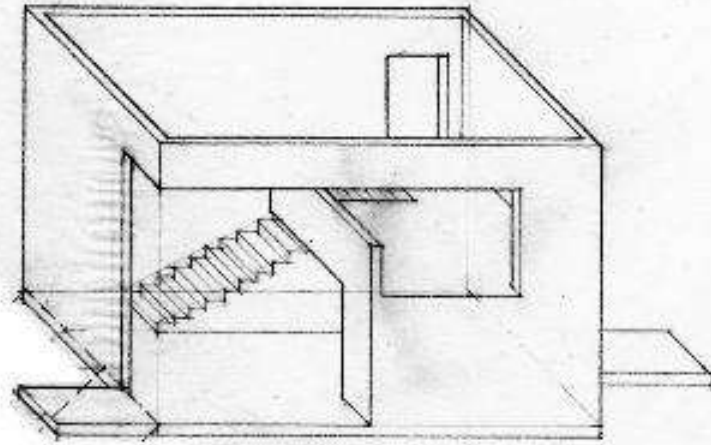
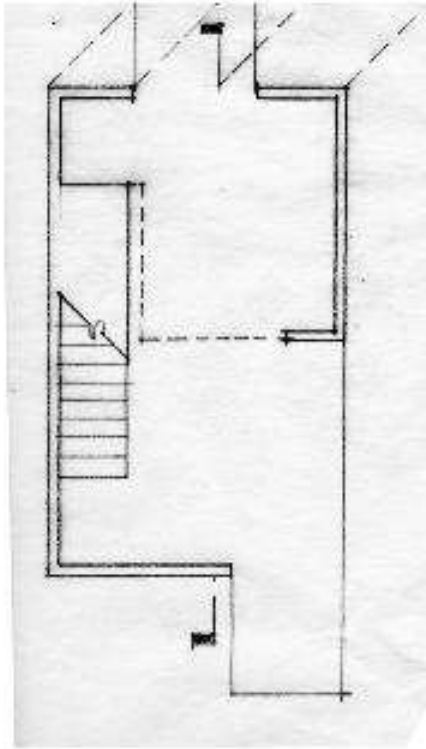




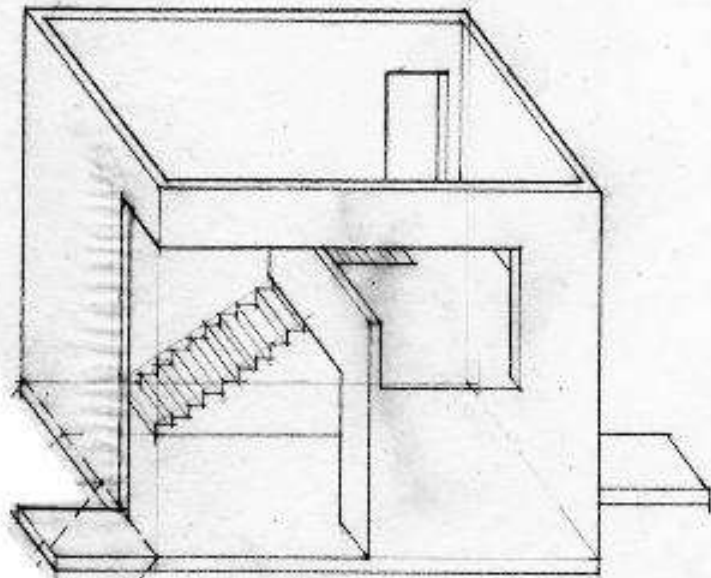
plan & elevation become raw
2d material for 3d
explorations.



The elevation is projected back in space using the plan: Unlike the axonometric drawing, the elevation rather than the plan is privileged.

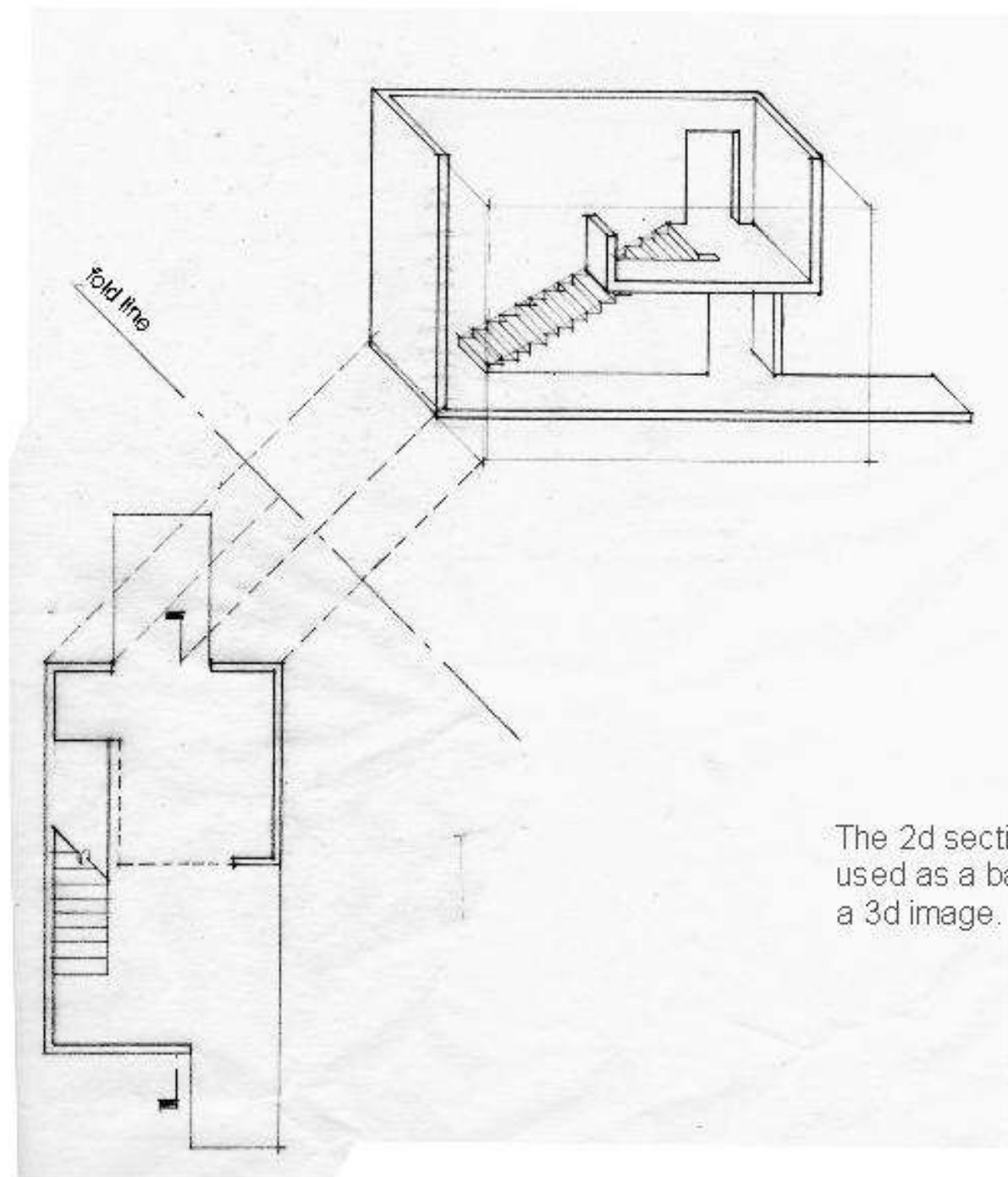


visually correct foreshortening

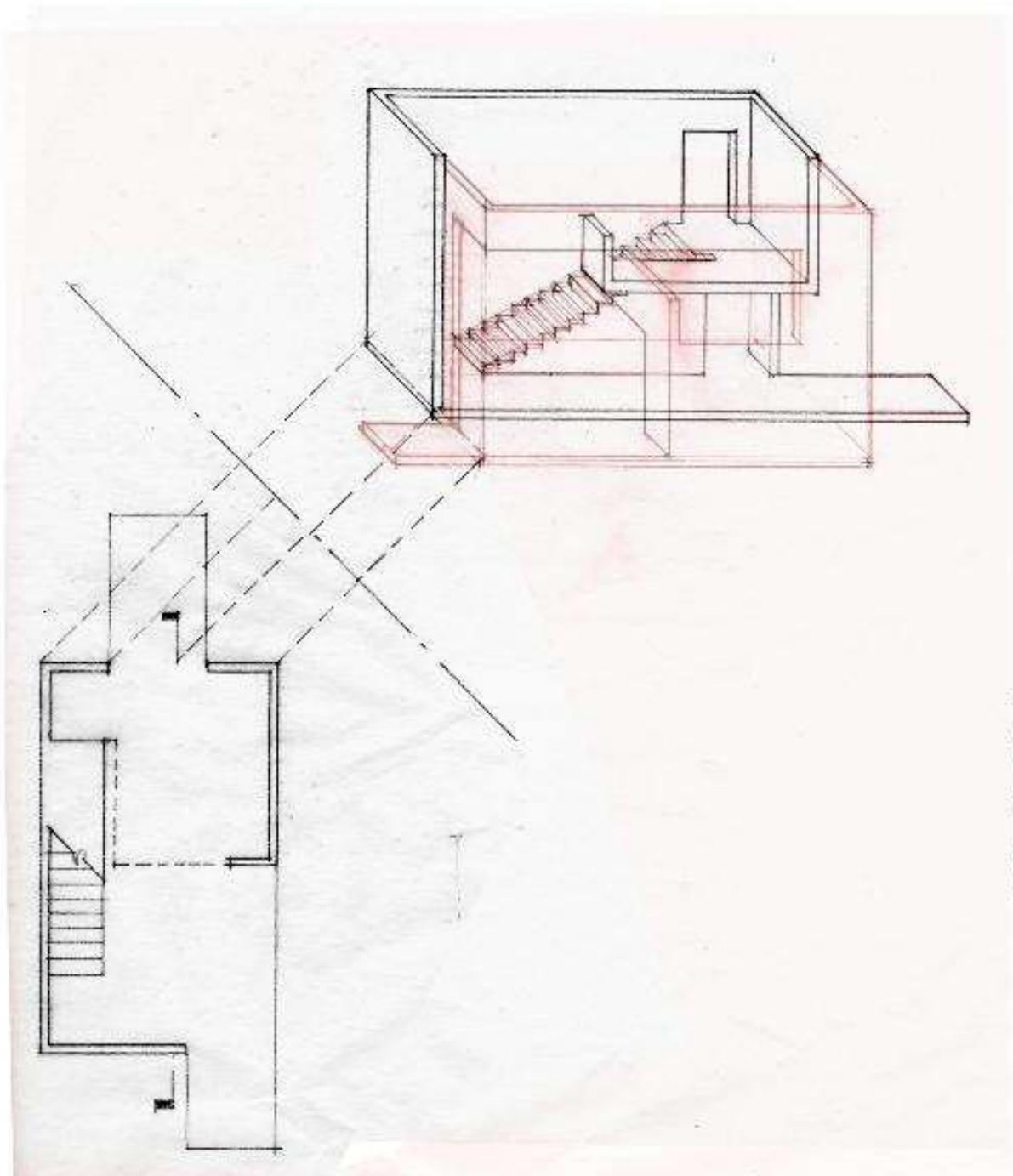


'correct' dimension of side elevations causes distortion

The role of the 'fold line':
As all projection drawings have foreshortened sides, the fold line allows one to foreshorten the side projected elevations. Note: axons also have this problem of distorted projection, however we are culturally accustomed to viewing this distortion.



The 2d section can also be used as a base for projecting a 3d image.

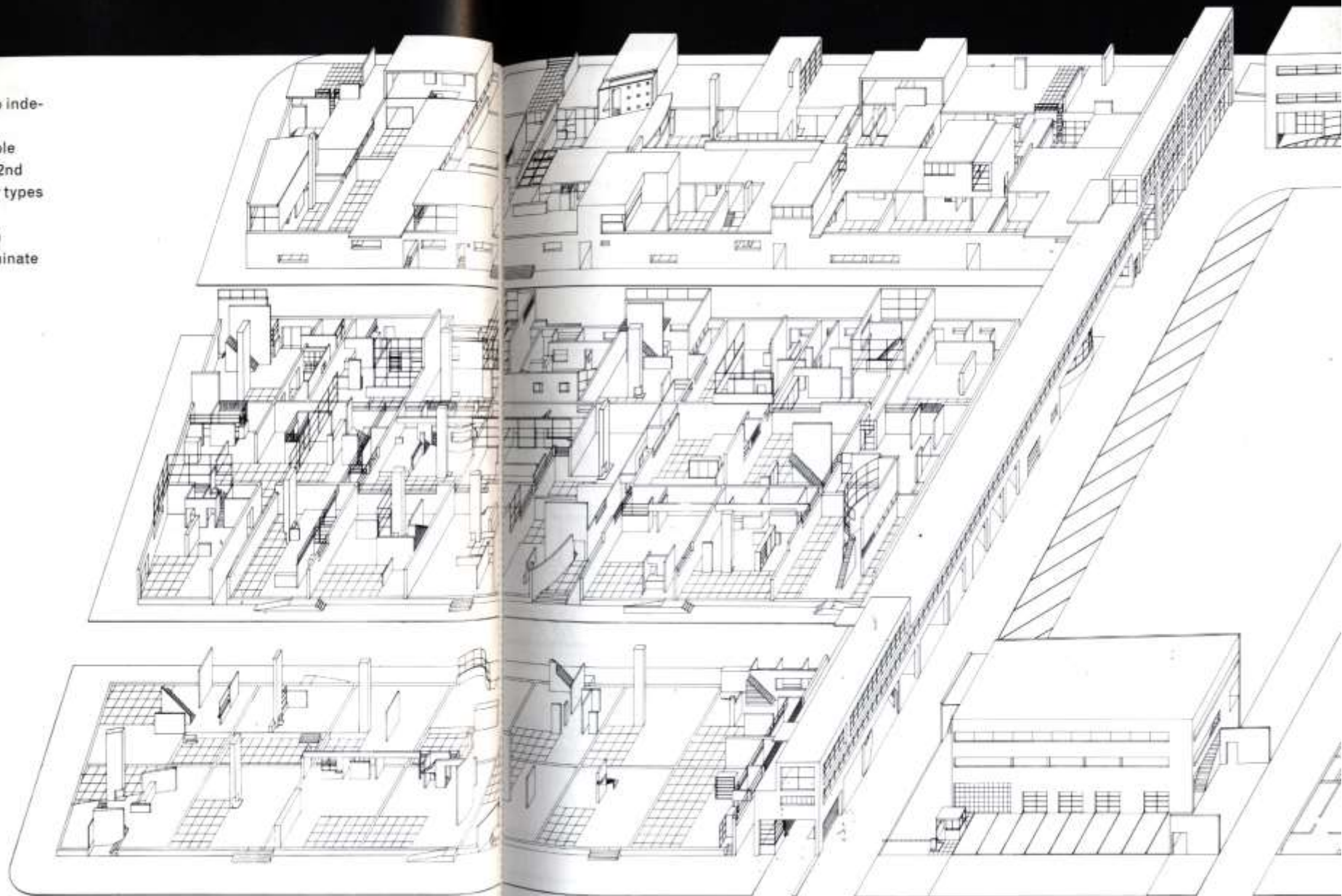


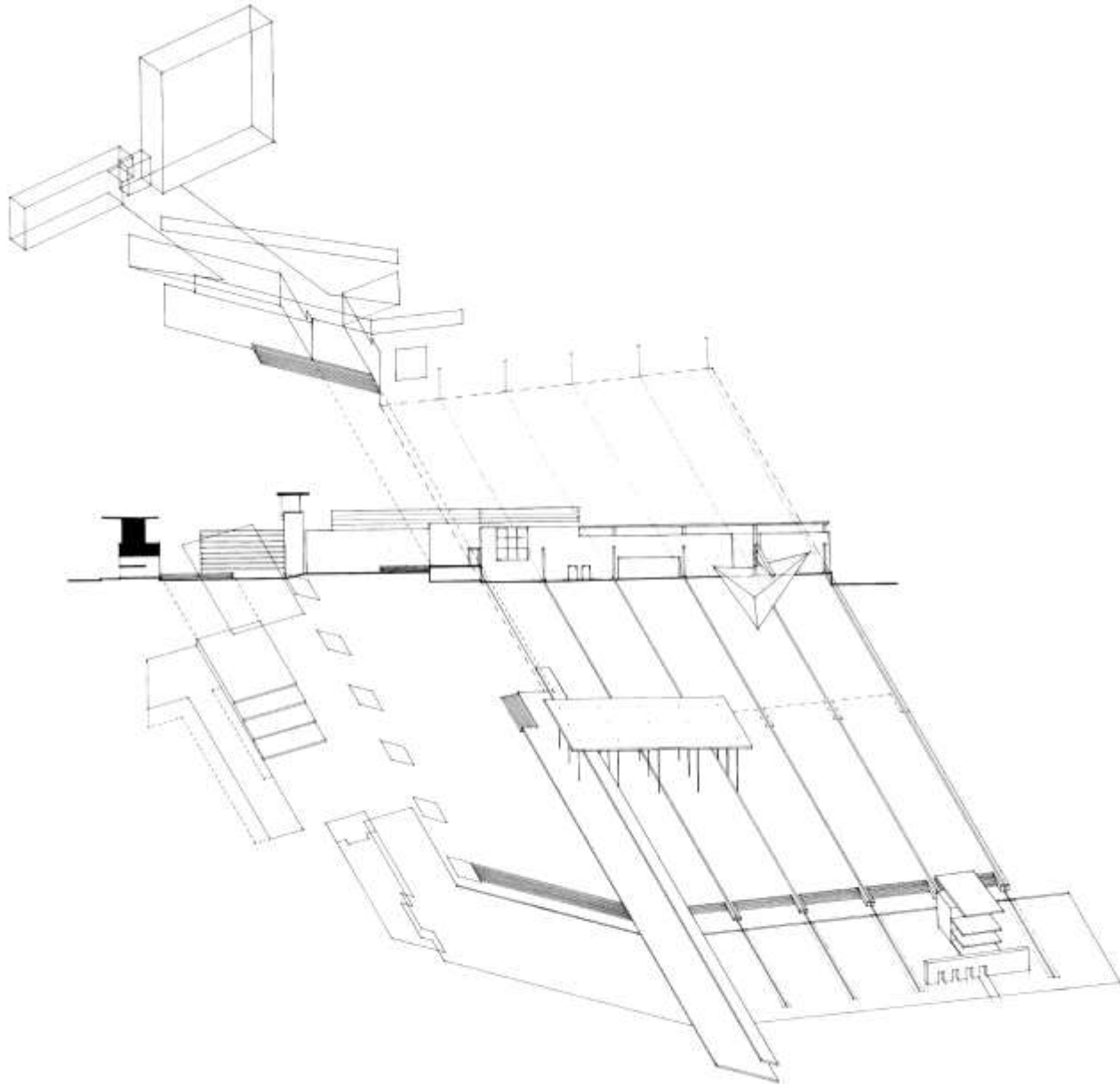
elevations and sections can be considered as 'slice-planes' so that multiple cuts can be overlaid limitlessly within the same projection drawing.

d id into inde-

essible
ar and 2nd
ararger types

etween
te terminate





passage—projections—exhibition
halls, garden, and open pavilion

