

가

(가)

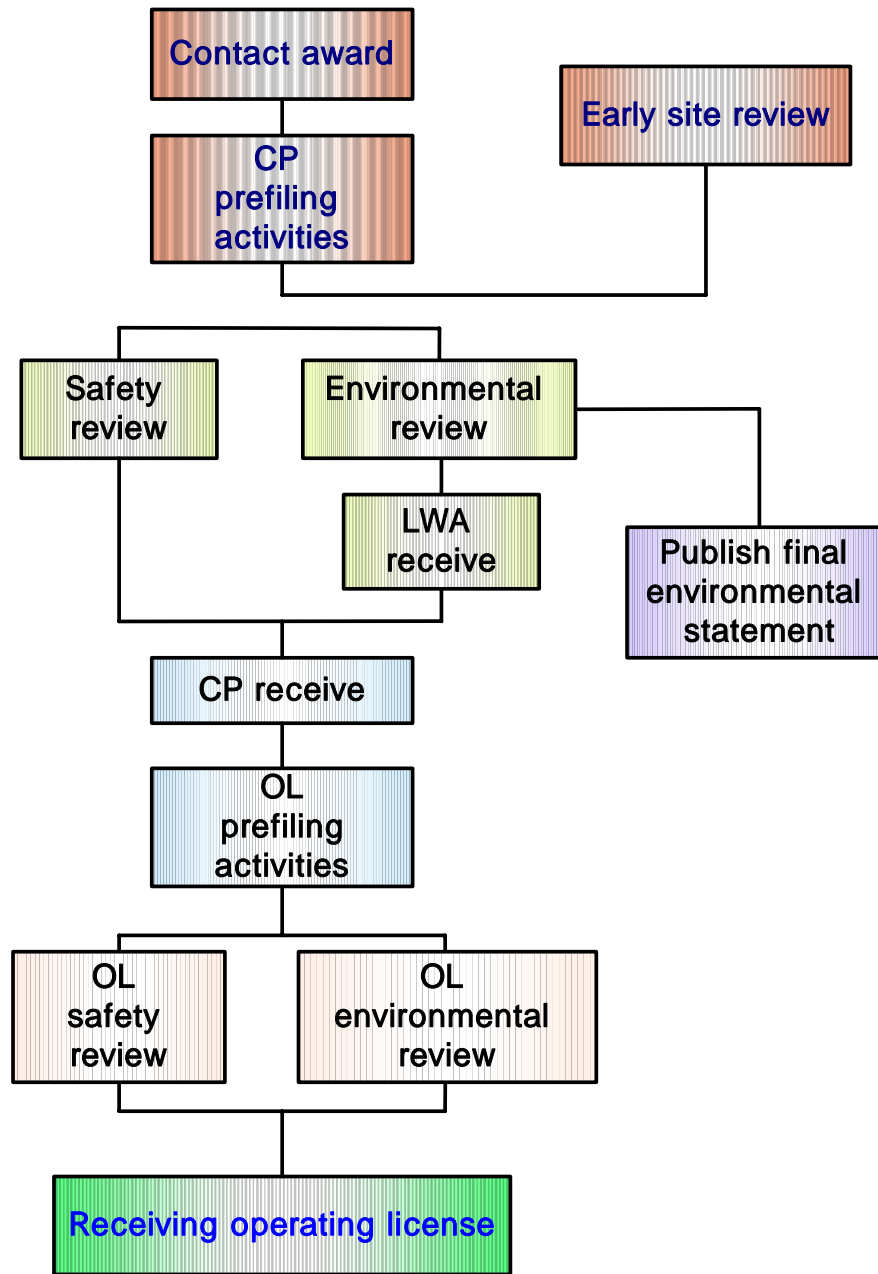
가 (가)

- - Parts of Title 10 of the Code of Federal Regulations[10CFR] Affecting Commercial
 - Licensing process overview
 - USNRC Organization Chart
 -
 -
 -
 -
 -

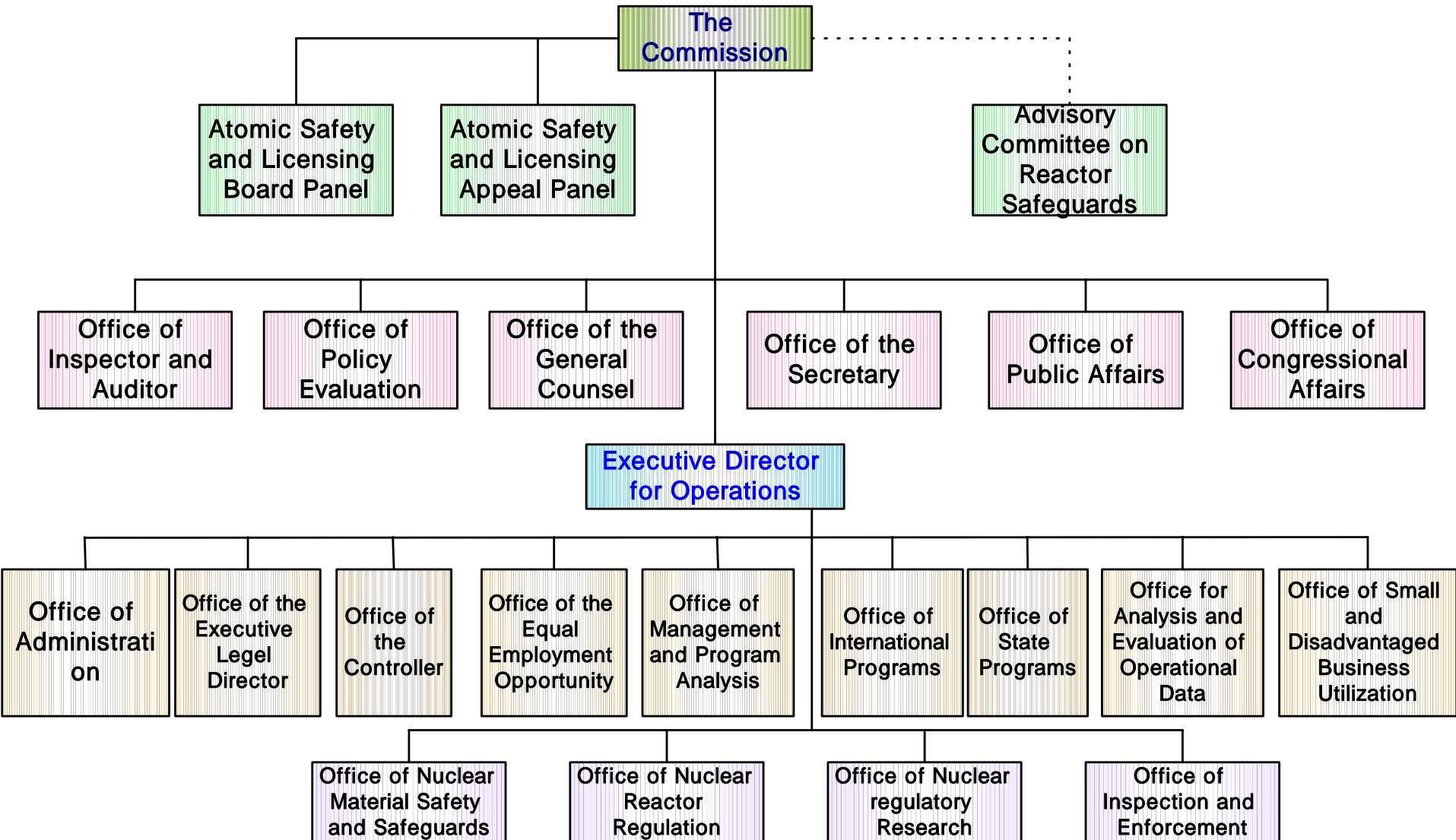
Tab.19- 1 Parts of Title 10 of the Code of Federal Regulations[10CFR] Affecting Commercial Reactor and Fuel Cycle Operations(10CFR,1979)

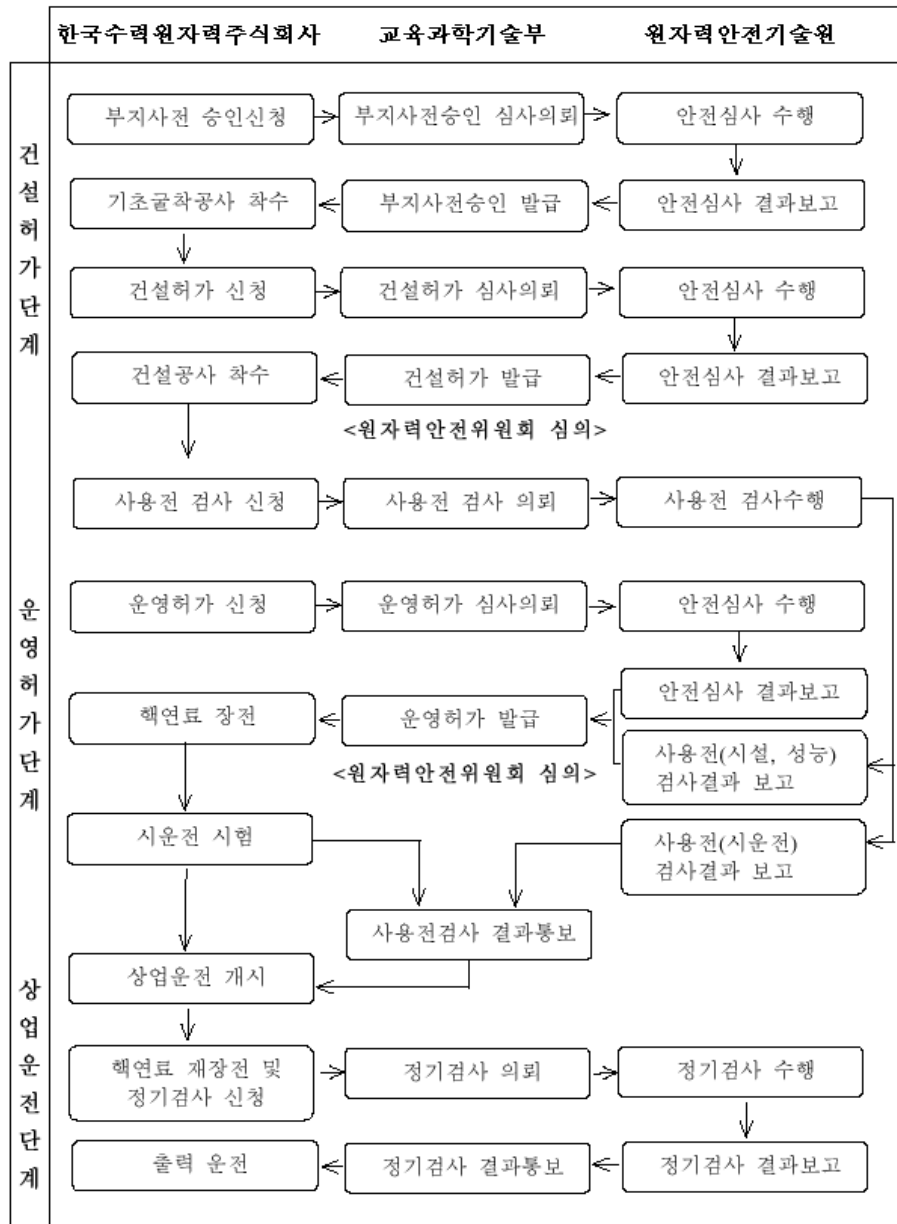
Part	Name	Summary of scope
0	Conduct of employee	
1	Statement of organization and general information	
2	Rules of practice for domestic licensing proceedings	Identifies NRC's own rules of procedure for: issuing, amending, and revoking licenses; imposing fines; and making rules
20	Standards for protection against radiation	Establishes standards for protection against radiation hazards
50	Licensing of production and utilization facilities	Establishes requirements for obtaining construction permits and operating licenses for fuel-cycle facilities and reactors
51	Licensing and regulatory policy and procedure for environmental protection	Identifies procedures through which the NRC complies with the National Environmental Policy Act of 1969 [NEPA]
55	Operators' licenses	Establishes procedures and criteria for issuance of licenses to operators of reactors and reprocessing facilities
70	Domestic licensing of special nuclear material	Establishes procedures and criteria for issuance of license to receive, own, and use special nuclear material
73	Physical protection of plant and materials	Prescribe requirements for physical protection of special nuclear materials and facilities against acts of industrial sabotage or theft
100	Reactor site criteria	Describes criteria for evaluation of the suitability of proposed reactor sites
170	Fees for facilities and materials licenses	Sets fees charged for licensing services

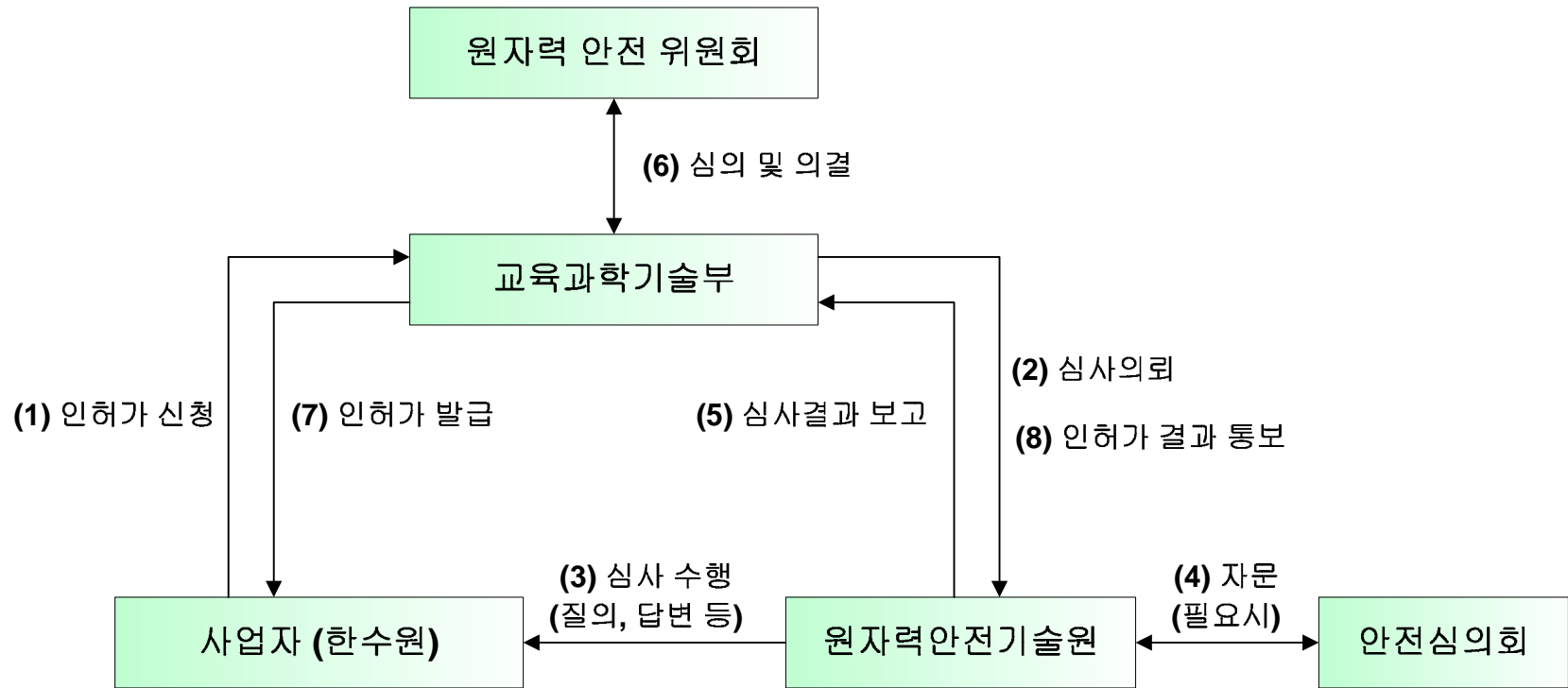
Licensing process overview

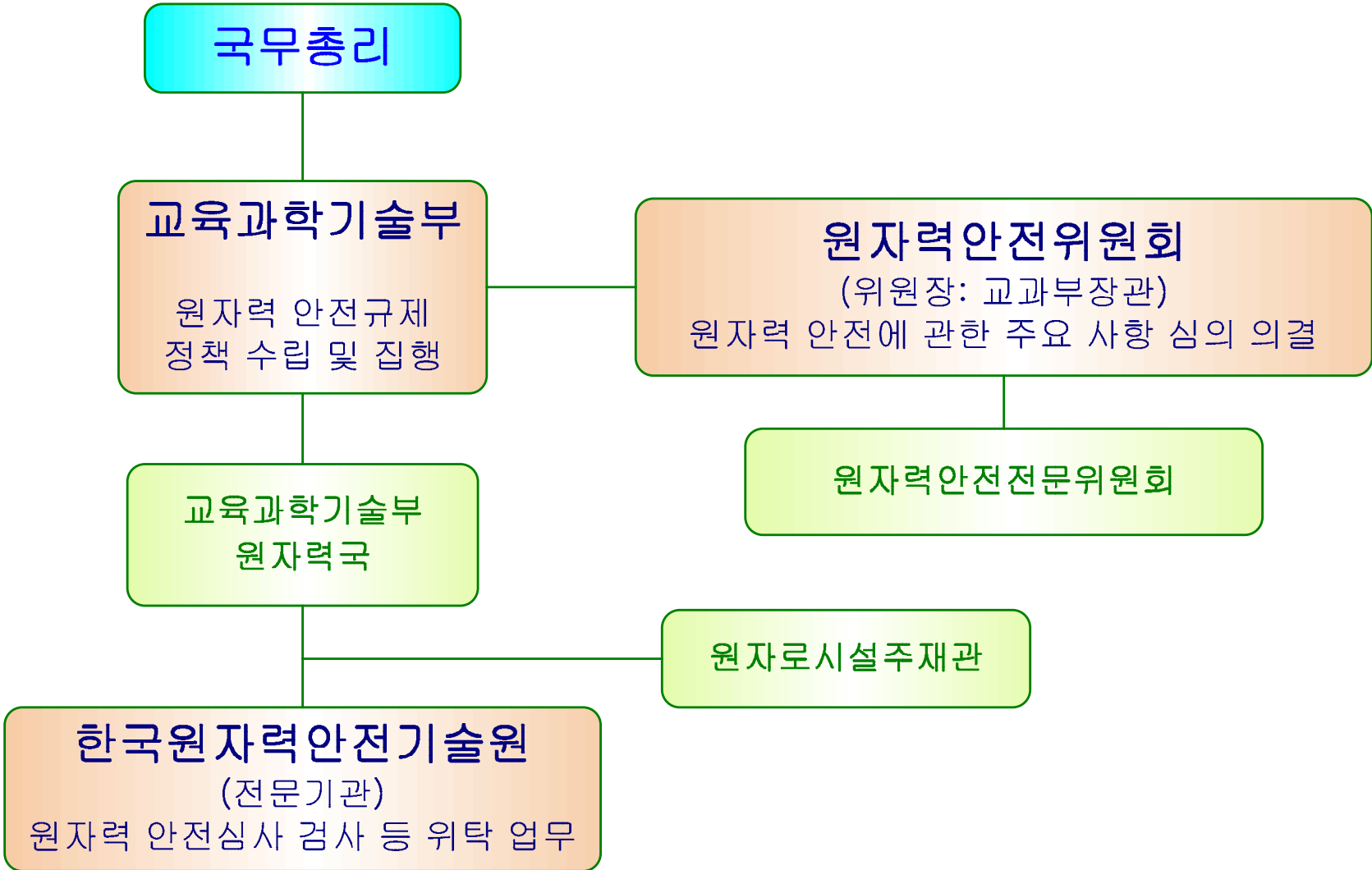


U. S. Nuclear Regulatory Commission Organization Chart





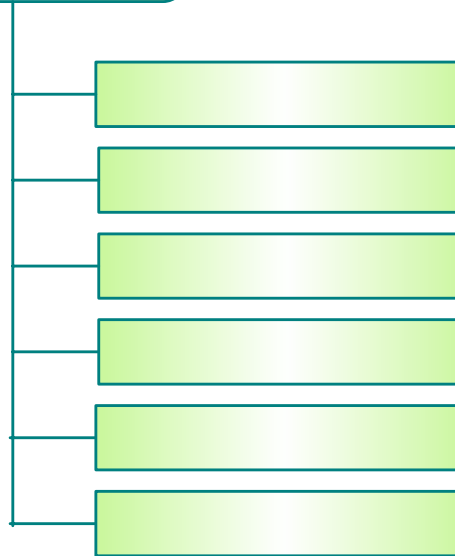




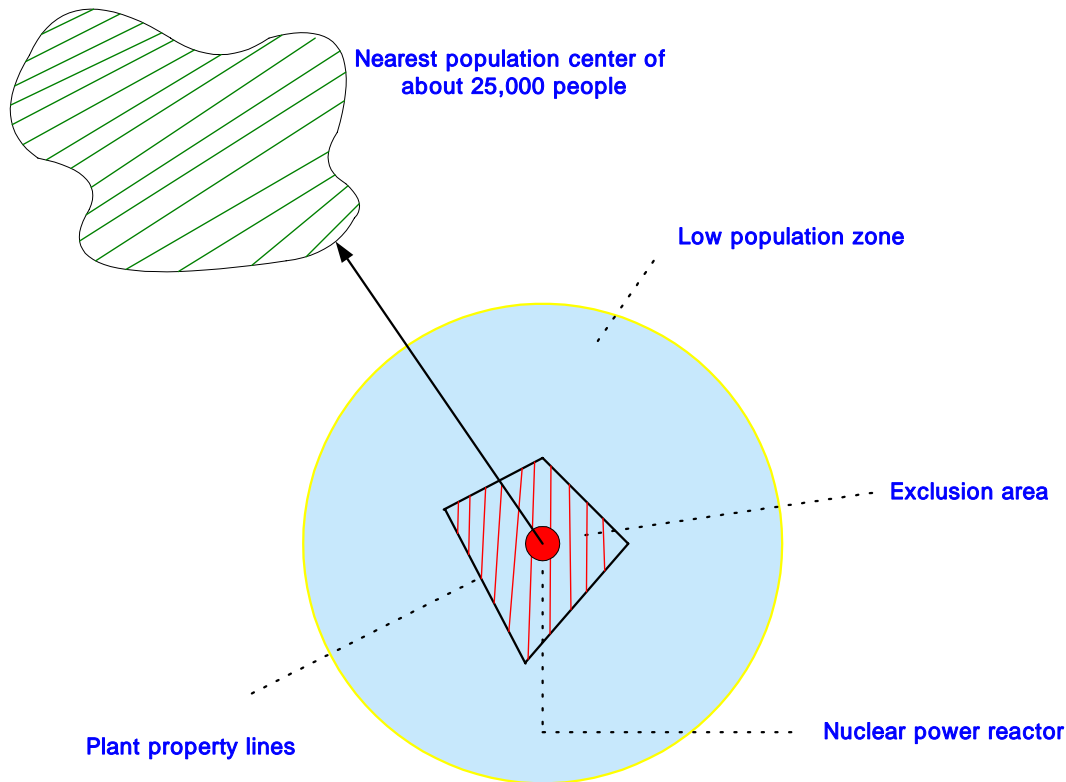
장 관

제 2 차 관

원자력국장



Schematic of the various distance and zoning requirement



- (1) At boundary of exclusion area, no member of public may exceed 25 rems whole-body dose for design basis accident
- (2) Timely evacuation of low population zone must be planned.
- (3) Population center must be at least $1 \frac{1}{3}$ times farther away than LPZ boundary

가

1. ,

2.

3.

, ,

4. Engineering Safeguards

Population Consideration

1. Exclusion Area/Exclusion Zone

- 가

2

< 25 rem

< 300 rem

2. Low Population Zone (LPZ)

- 가

가

< 25 rem

< 300 rem

3. Population Center Distance (PCD)

- 25,000