

재료의 기계적 거동 (Mechanical Behavior of Materials)

Lecture 9 – Dislocations (Elastic Properties)

Heung Nam Han

Professor

Department of Materials Science & Engineering

College of Engineering

Seoul National University

Seoul 151-744, Korea

Tel : +82-2-880-9240

Fax : +82-2-885-9647

email : hnhan@snu.ac.kr

Office hours : Tuesday, Thursday 16:45~17:30

Homepage : <http://mmmpdl.snu.ac.kr>



Introduction

- ◆ Dislocations are **line defects**. Thus, they distort the perfect crystal lattice.
- ◆ This lattice distortion **increases the free energy of the crystal lattice**. This is a direct result of **the elastic strain fields** that surround dislocations.
- ◆ **Interactions between the strain fields** (i.e., the distorted regions) around dislocations (and those of other defects) ultimately **determines the mechanical properties** of the lattice.



Stress field of a straight screw dislocation

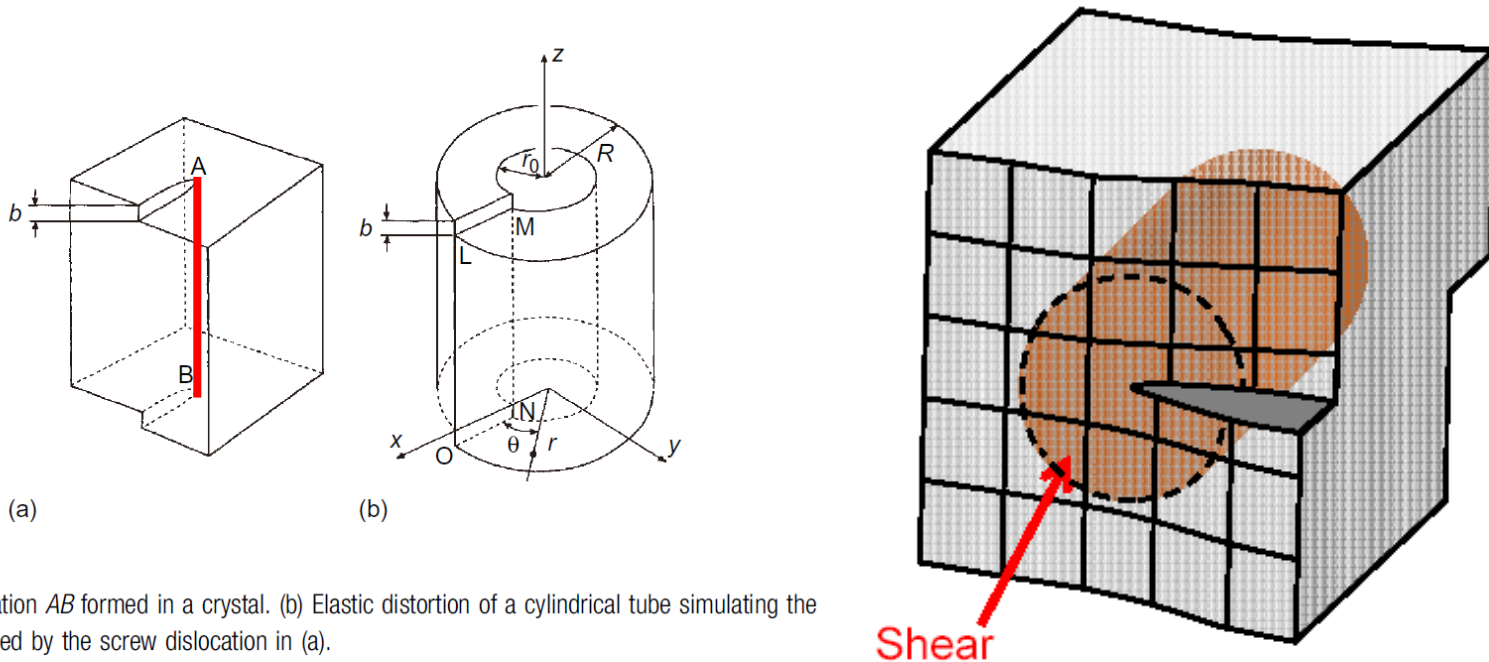


FIGURE 4.5

(a) Screw dislocation AB formed in a crystal. (b) Elastic distortion of a cylindrical tube simulating the distortion produced by the screw dislocation in (a).

Near the center of the dislocation along the dislocation line, the displacements are too large to be calculated with elasticity theory. Hooke's law does not apply here. This region is called the *dislocation core*. A few lattice spacings from the core, say at a distance r_0 , we can model things using elasticity theory. Hooke's law applies here. r_0 is called the *cutoff radius*. It typically has a value near b .

Stress field of a straight screw dislocation

$$\begin{aligned}\varepsilon_{yz} &= \frac{1}{2}(u_{z,y} + u_{y,z}) \\ &= \frac{b \cos \theta}{4\pi r} \\ &= \frac{b x}{4\pi(x^2 + y^2)}\end{aligned}$$

$$\begin{aligned}\varepsilon_{xz} &= \frac{1}{2}(u_{z,x} + u_{x,z}) \\ &= -\frac{b \sin \theta}{4\pi r} \\ &= -\frac{b y}{4\pi(x^2 + y^2)}\end{aligned}$$

$$\varepsilon_{xx} = \varepsilon_{yy} = \varepsilon_{zz} = \varepsilon_{xy} = 0$$

$$\begin{aligned}\sigma_{yz} &= \frac{Gb}{2\pi} \frac{x}{x^2 + y^2} \\ &= \frac{Gb \cos \theta}{2\pi r}\end{aligned}$$

$$\begin{aligned}\sigma_{xz} &= -\frac{Gb}{2\pi} \frac{y}{x^2 + y^2} \\ &= -\frac{Gb \sin \theta}{2\pi r}\end{aligned}$$

$$\sigma_{xx} = \sigma_{yy} = \sigma_{zz} = \sigma_{xy} = 0$$

$$\varepsilon_{z\theta} = \frac{b}{4\pi r}$$



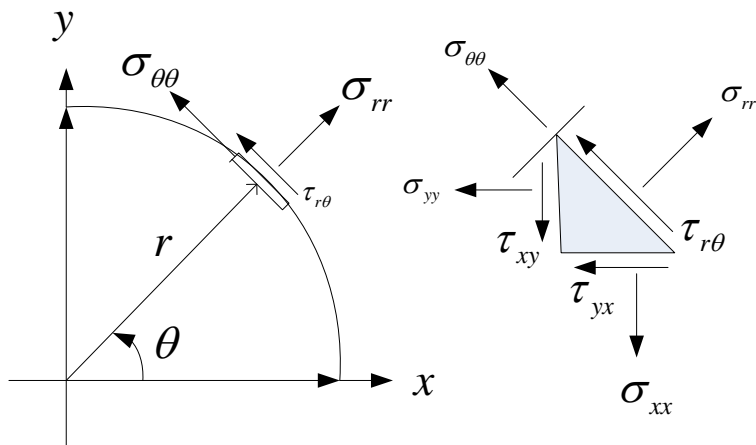
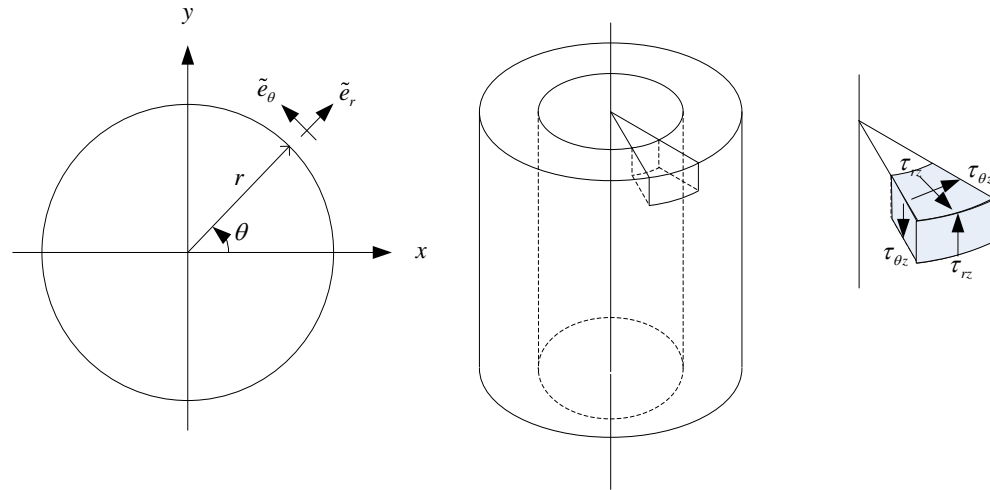
$$\sigma_{\theta z} = \frac{Gb}{2\pi r}$$



Stress field of a straight screw dislocation

Cylindrical coordinate

(r, θ, z)



$$\begin{aligned}\sigma_{rr} &= \sigma_{xx} \cos^2 \theta + \sigma_{yy} \sin^2 \theta + 2\tau_{xy} \sin \theta \cos \theta \\ \sigma_{\theta\theta} &= \sigma_{xx} \sin^2 \theta + \sigma_{yy} \cos^2 \theta - 2\tau_{xy} \sin \theta \cos \theta \\ \tau_{r\theta} &= (\sigma_{yy} - \sigma_{xx}) \sin \theta \cdot \cos \theta + \tau_{xy} (\cos^2 \theta - \sin^2 \theta) \\ \sigma_{zz} &= \sigma_{zz} \\ \sigma_{rz} &= \sigma_{xz} \cos \theta + \sigma_{yz} \sin \theta \\ \sigma_{\theta z} &= -\sigma_{xz} \sin \theta + \sigma_{yz} \cos \theta\end{aligned}$$

Stress field of a straight edge dislocation

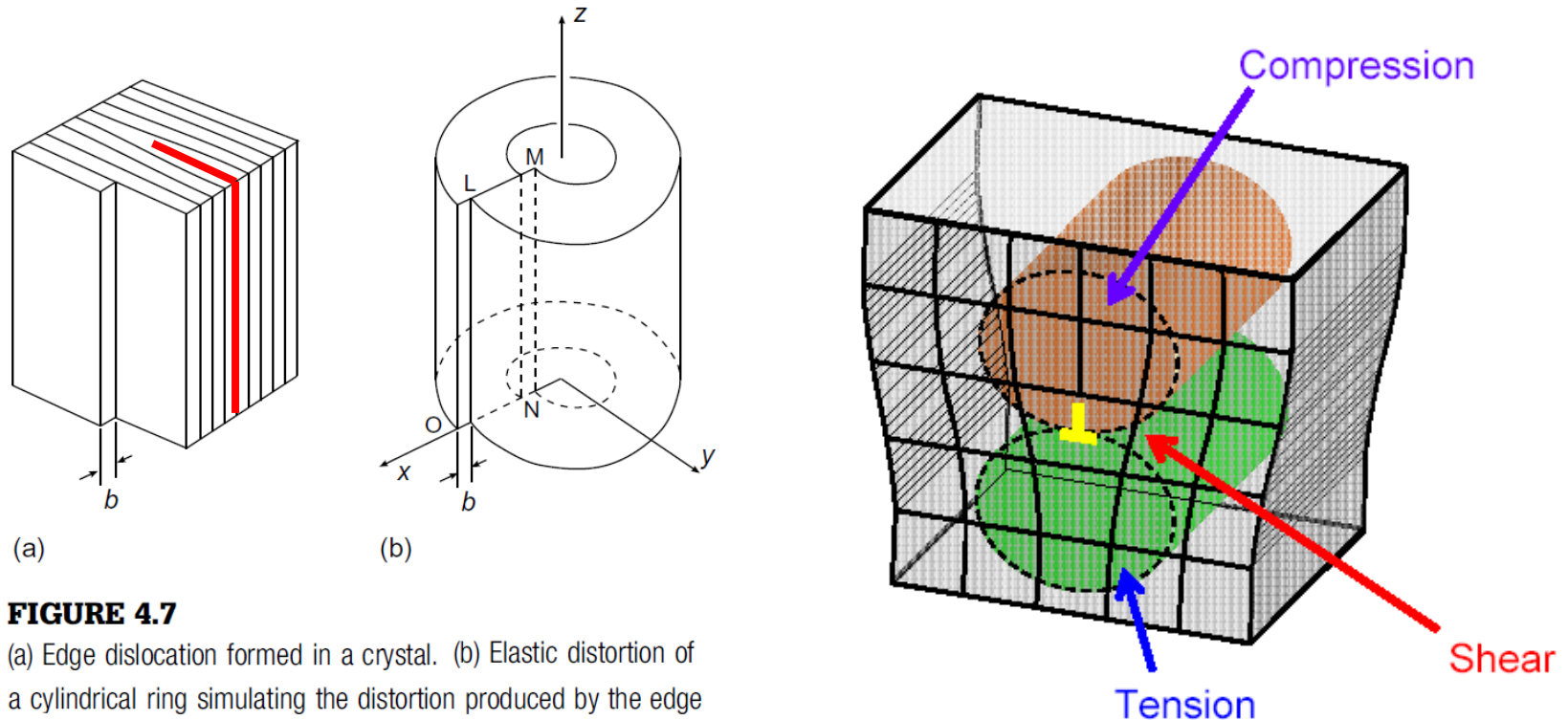


FIGURE 4.7

(a) Edge dislocation formed in a crystal. (b) Elastic distortion of a cylindrical ring simulating the distortion produced by the edge dislocation in (a).

The pure edge dislocation has a **plane strain condition** since the displacement along the dislocation line, u_z , is absent. The stress field around a straight edge dislocation is obtained from the equilibrium condition.

Stress field of a straight edge dislocation

$$\sigma_{xx} = -\frac{Gb}{2\pi(1-\nu)} \frac{y(3x^2 + y^2)}{(x^2 + y^2)^2}$$

$$\sigma_{yy} = \frac{Gb}{2\pi(1-\nu)} \frac{y(x^2 - y^2)}{(x^2 + y^2)^2}$$

$$\sigma_{zz} = \nu(\sigma_{xx} + \sigma_{yy})$$

$$= -\frac{Gb\nu}{\pi(1-\nu)} \frac{y}{x^2 + y^2}$$

$$\sigma_{xy} = \frac{Gb}{2\pi(1-\nu)} \frac{x(x^2 - y^2)}{(x^2 + y^2)^2}$$

$$\sigma_{zx} = \sigma_{yz} = 0$$

$$\sigma_{rr} = \sigma_{\theta\theta} = -\frac{Gb}{2\pi(1-\nu)} \frac{\sin\theta}{r}$$

$$\sigma_{zz} = \nu(\sigma_{rr} + \sigma_{\theta\theta}) = -\frac{Gb\nu}{\pi(1-\nu)} \frac{\sin\theta}{r}$$

$$\sigma_{r\theta} = \frac{Gb}{2\pi(1-\nu)} \frac{\cos\theta}{r}$$

$$\sigma_{zr} = \sigma_{\theta z} = 0$$

Stress field of a straight edge dislocation

$$\sigma_{xx} = -\frac{Gb}{2\pi(1-\nu)} \frac{y(3x^2 + y^2)}{(x^2 + y^2)^2}$$

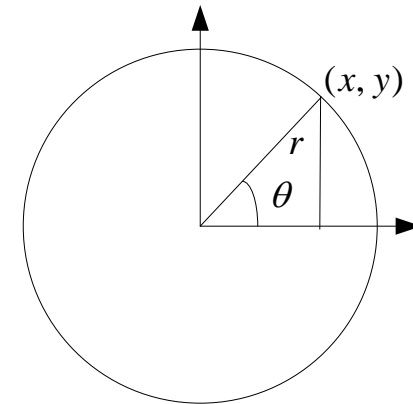
$$\sigma_{yy} = \frac{Gb}{2\pi(1-\nu)} \frac{y(x^2 - y^2)}{(x^2 + y^2)^2}$$

$$\sigma_{zz} = \nu(\sigma_{xx} + \sigma_{yy})$$

$$= -\frac{Gb\nu}{\pi(1-\nu)} \frac{y}{x^2 + y^2}$$

$$\sigma_{xy} = \frac{Gb}{2\pi(1-\nu)} \frac{x(x^2 - y^2)}{(x^2 + y^2)^2}$$

$$\sigma_{zx} = \sigma_{yz} = 0$$



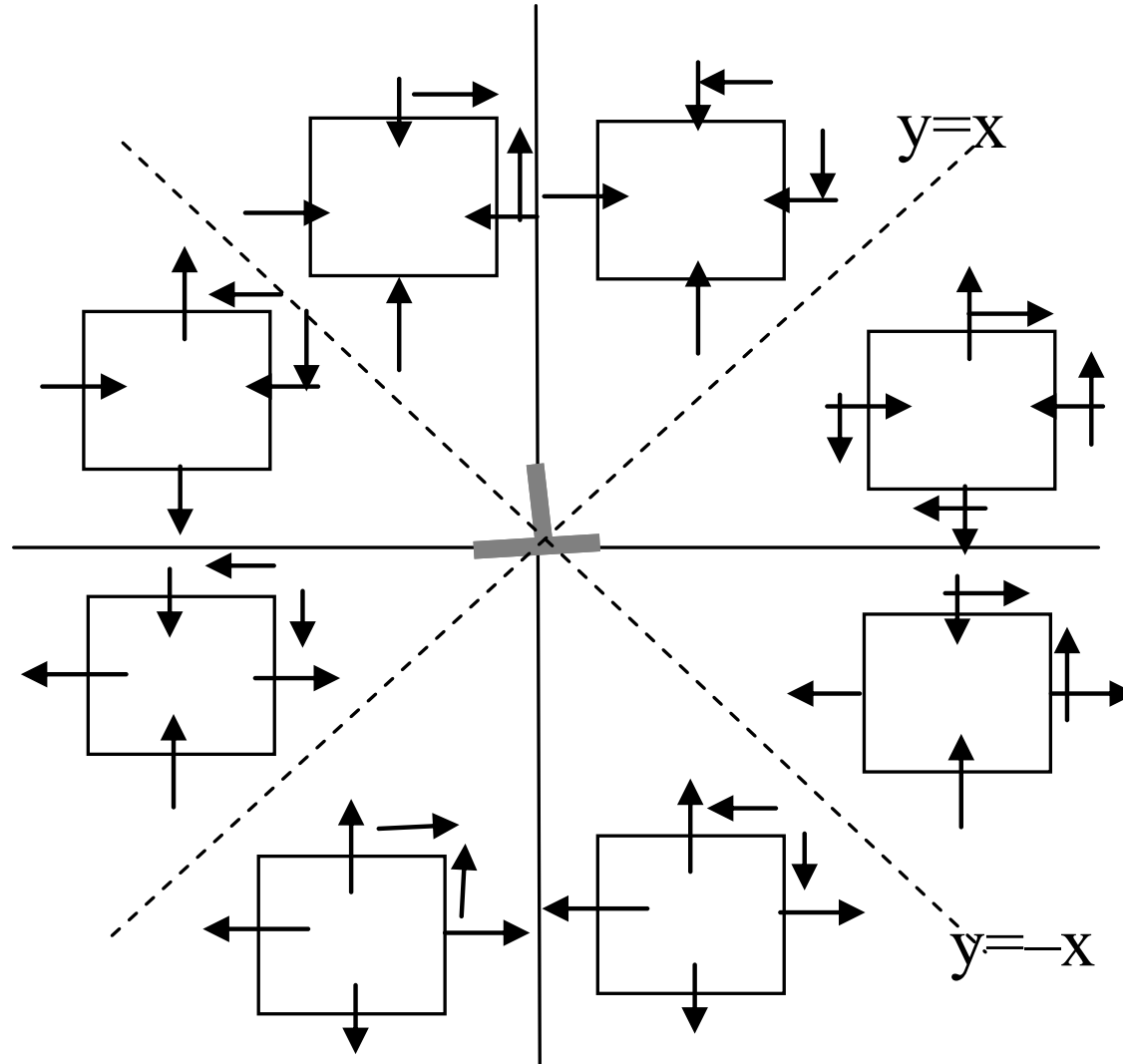
$$\sigma_{xx} = -\frac{Gb}{2\pi r(1-\nu)} \sin \theta \cdot (2 + \cos 2\theta)$$

$$\sigma_{yy} = \frac{Gb}{2\pi r(1-\nu)} \sin \theta \cdot \cos 2\theta$$

$$\tau_{xy} = \tau_{yx} = \frac{Gb}{2\pi(1-\nu)r} \cos \theta \cdot \cos 2\theta$$

$$\sigma_{zz} = -\frac{Gb\nu}{\pi(1-\nu)r} \sin \theta$$

Stress field of a straight edge dislocation



Strain energy of a dislocation

- E_{total} can be divided into two parts:

$$E_{\text{total}} = E_{\text{core}} + E_{\text{elastic (strain energy)}}$$

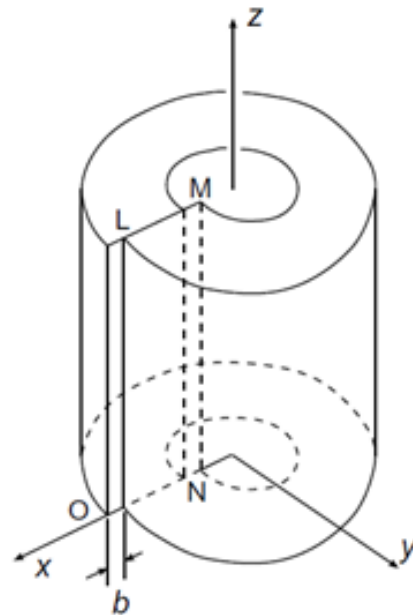
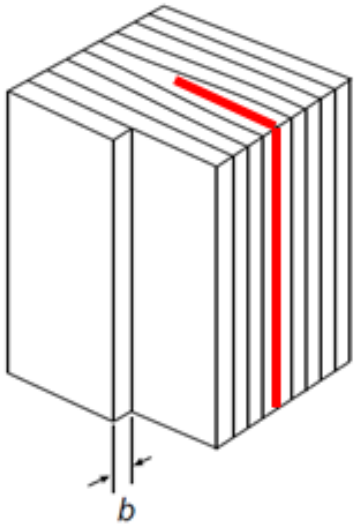
- The core contribution is difficult to calculate. It is estimated to have a value of ≈ 0.5 eV/plane threaded by a dislocation.

Elastic strain energy per unit length in screw dislocation

$$\begin{aligned} \frac{E_{\text{elast}}(\text{screw})}{l} &= \int_{r_0}^R 2G \frac{b^2}{(4\pi r)^2} 2\pi r dr \\ &= \frac{Gb^2}{4\pi} \int_{r_0}^R \frac{1}{r^2} dr = \boxed{\frac{Gb^2}{4\pi} \ln\left(\frac{R}{r_0}\right)} \end{aligned}$$

Strain energy of a dislocation

Elastic strain energy per unit length in edge dislocation



$$dE_{el}(edge) = \frac{1}{2} \sigma_{xy} dA \cdot b$$

$$dA = dx \cdot l$$

$$\frac{E_{el}(edge)}{l} = \int_{r_0}^R \frac{1}{2} bD \frac{x(x^2 - y^2)}{(x^2 + y^2)^2} \Big|_{y=0} bdx$$

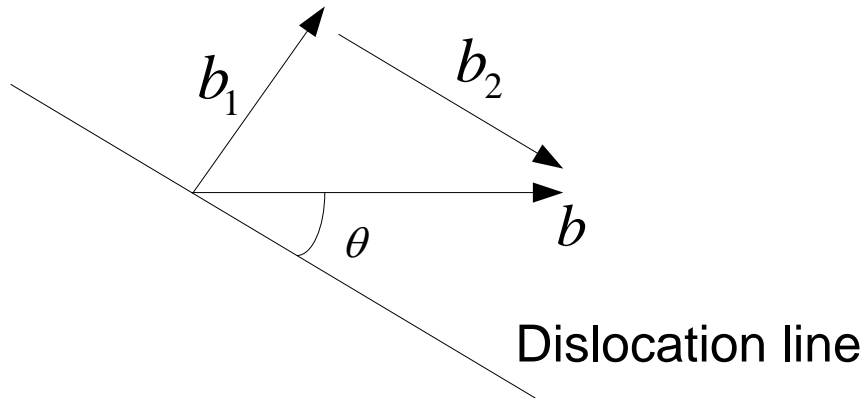
$$= \frac{bD}{2} \ln \left(\frac{R}{r_0} \right)$$

$$= \frac{Gb^2}{4\pi(1-\nu)} \ln \left(\frac{R}{r_0} \right)$$

$$D = \frac{Gb}{2\pi(1-\nu)}$$

Strain energy of a dislocation

Elastic strain energy per unit length in mixed dislocation



$$b_1 = b \sin \theta \quad (\text{edge})$$

$$b_2 = b \cos \theta \quad (\text{screw})$$

$$\frac{E_{el}(\text{mixed})}{l} = \left(\frac{Gb^2 \cos^2 \theta}{4\pi} + \frac{Gb^2 \sin^2 \theta}{4\pi(1-\nu)} \right) \ln \left(\frac{R}{r_0} \right)$$

Strain energy of a dislocation

- One of the important consequences of this relationship is that it allows us to determine whether or not it is energetically feasible for two dislocations to react and combine to form another. This is known as Frank's Rule.

$$E_{\text{elastic}} = \alpha G b^2$$

where $\alpha \approx 0.5 - 1.0$

OR

$$E_{\text{elastic}} \propto b^2$$

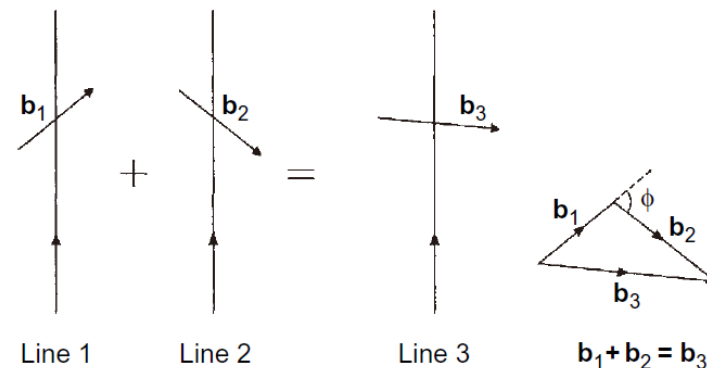


FIGURE 4.9

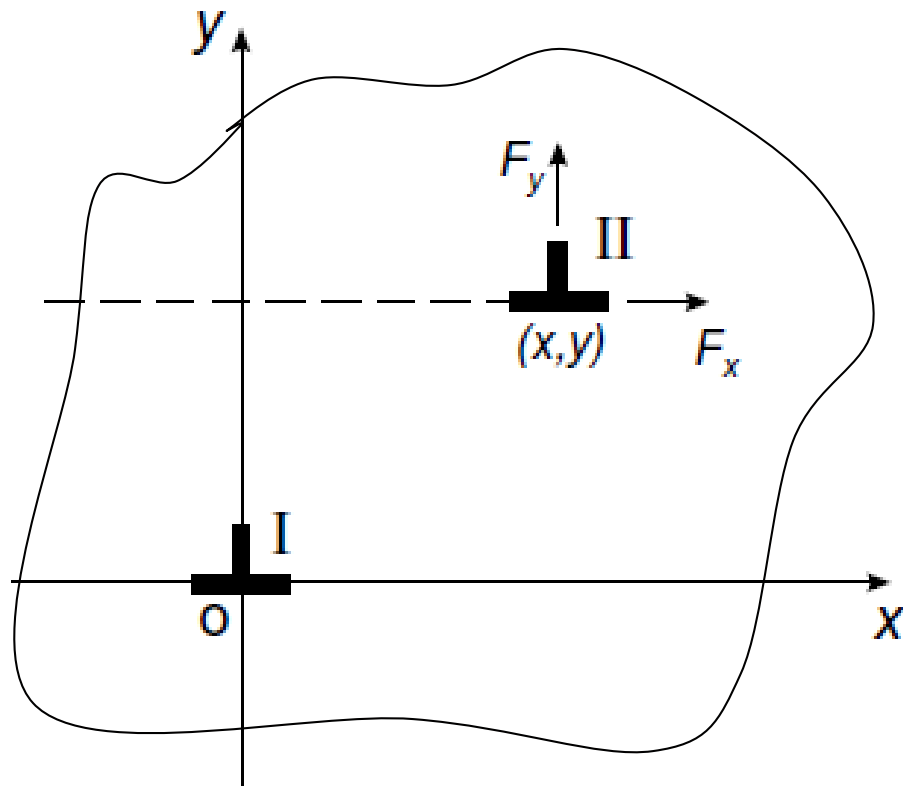
Reaction of two dislocations to form a third.

Yes if $(b_1^2 + b_2^2) > b_3^2$

No if $(b_1^2 + b_2^2) < b_3^2$

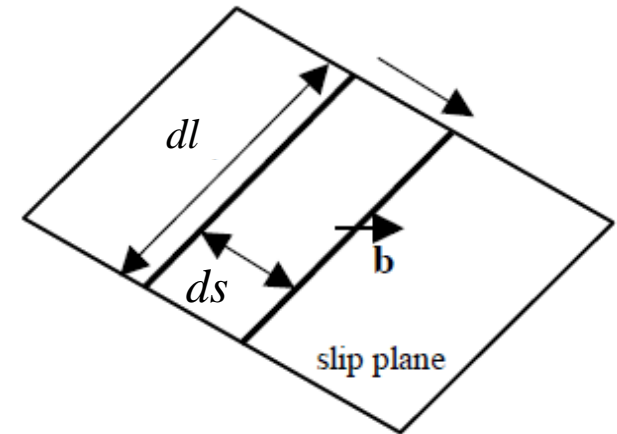
No net energy change if $(b_1^2 + b_2^2) = b_3^2$

What will happen when the dislocations adopt different configurations?



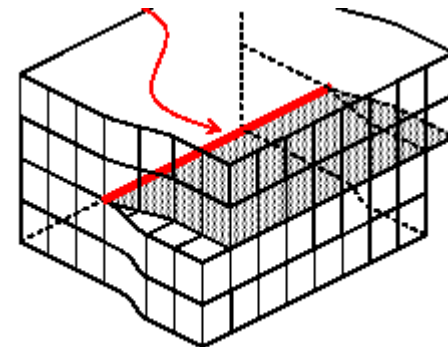
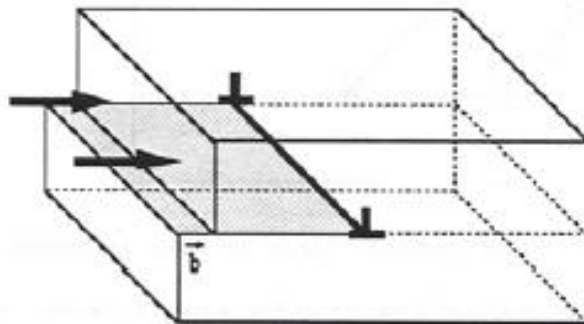
Force Acting on a Dislocation

- Total area of slip plane : A
- Average shear displacement : $(dl ds/A)b$
- Shear force on slip plane : τA
- Work done when the element of slip occurs :
 $dW = \tau A (dl ds/A)b = \tau(dl ds)b$



- The glide force F on a unit length of dislocation
 $F = dW/(dl ds) = dW/dA = \tau b$

Glide force is always directed normal to the dislocation line.



Peach-Koehler equation

Applied stress : $\boldsymbol{\sigma}$

Dislocation line vector (unit vector) : \mathbf{t}



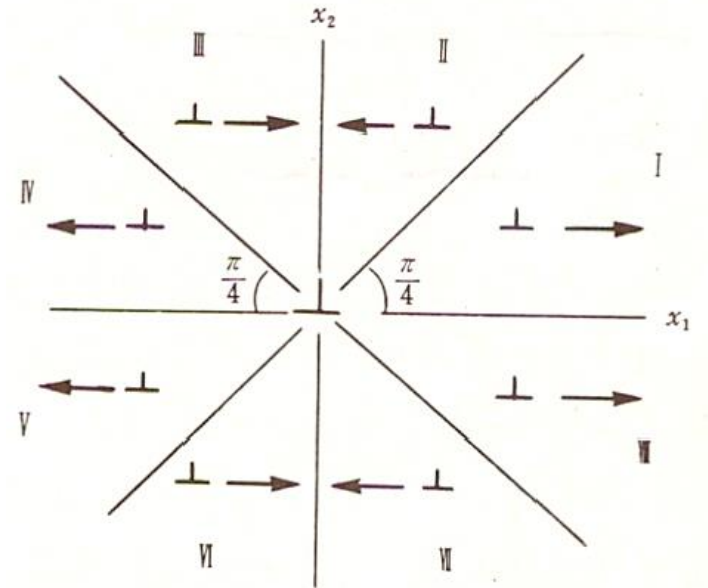
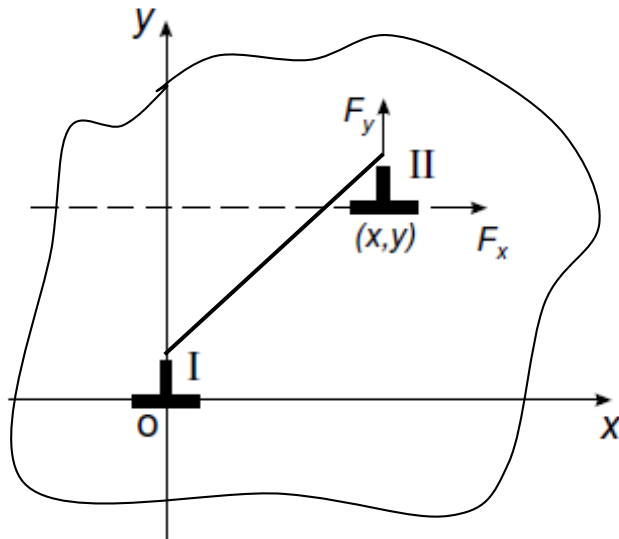
$$\mathbf{F} = (\boldsymbol{\sigma} \diamond \mathbf{b}) \times \mathbf{t}$$



$$\mathbf{F} = \begin{vmatrix} \mathbf{i} & \mathbf{j} & \mathbf{k} \\ G_1 & G_2 & G_3 \\ t_1 & t_2 & t_3 \end{vmatrix} \quad \begin{aligned} G_1 &= \sigma_{11}\mathbf{b}_1 + \sigma_{12}\mathbf{b}_2 + \sigma_{13}\mathbf{b}_3 \\ G_2 &= \sigma_{21}\mathbf{b}_1 + \sigma_{22}\mathbf{b}_2 + \sigma_{23}\mathbf{b}_3 \\ G_3 &= \sigma_{31}\mathbf{b}_1 + \sigma_{32}\mathbf{b}_2 + \sigma_{33}\mathbf{b}_3 \end{aligned}$$



What will happen when the dislocations adopt different configurations?



$$F_x = \frac{Gbb'}{2\pi(1-\nu)r} \cos \theta \cos 2\theta$$

$$F_y = \frac{Gbb'}{2\pi(1-\nu)r} \sin \theta (2 + \cos 2\theta)$$

What will happen when the dislocations adopt different configurations?

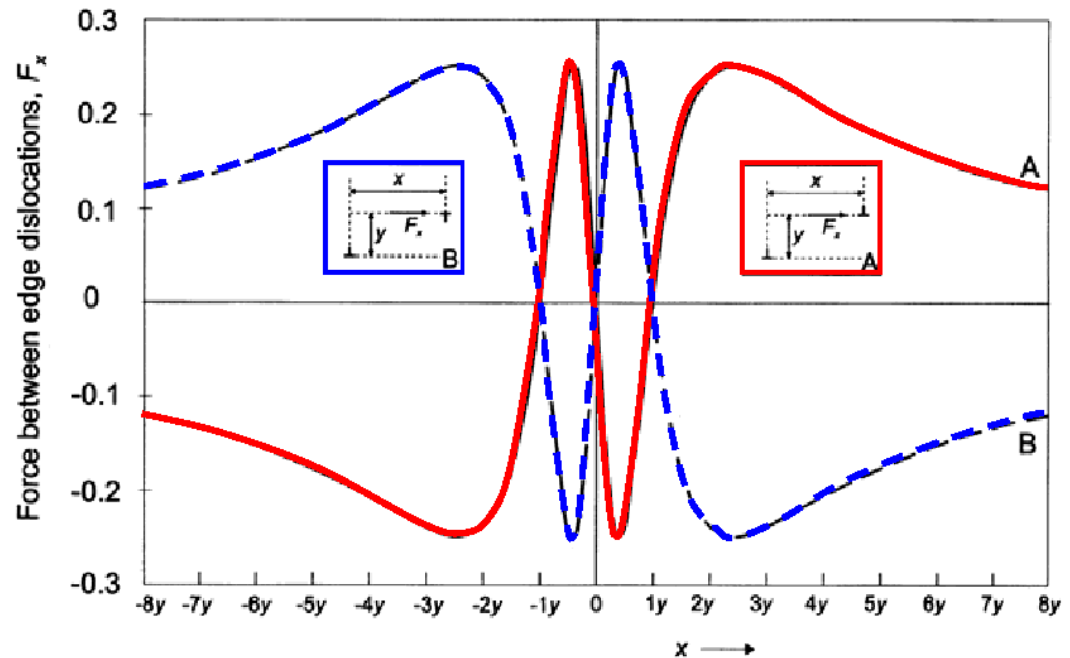
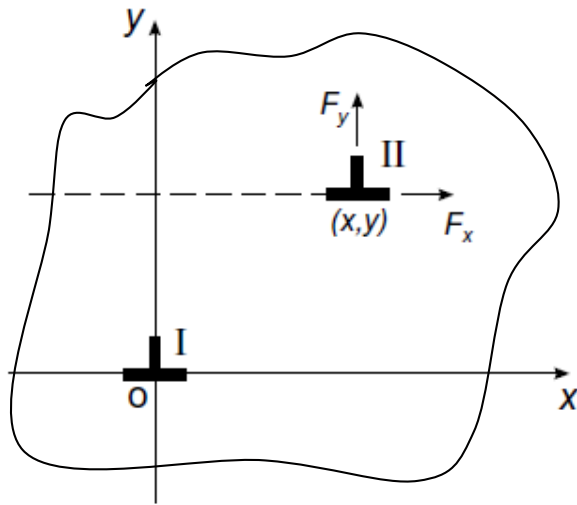


Figure 4.13 Glide force per unit length between parallel edge dislocations with parallel Burgers vectors from equation (4.36). Unit of force F_x is $Gb^2/2\pi(1-\nu)y$. The full curve A is for like dislocations and the broken curve B for unlike dislocations.

$$\mathbf{F} = b_1 \frac{Gb_2}{2\pi(1-\nu)} \frac{x(x^2 - y^2)}{(x^2 + y^2)^2} \mathbf{i} + b_1 \frac{Gb_2}{2\pi(1-\nu)} \frac{y(3x^2 + y^2)}{(x^2 + y^2)^2} \mathbf{j}$$

What will happen when the dislocations adopt different configurations?

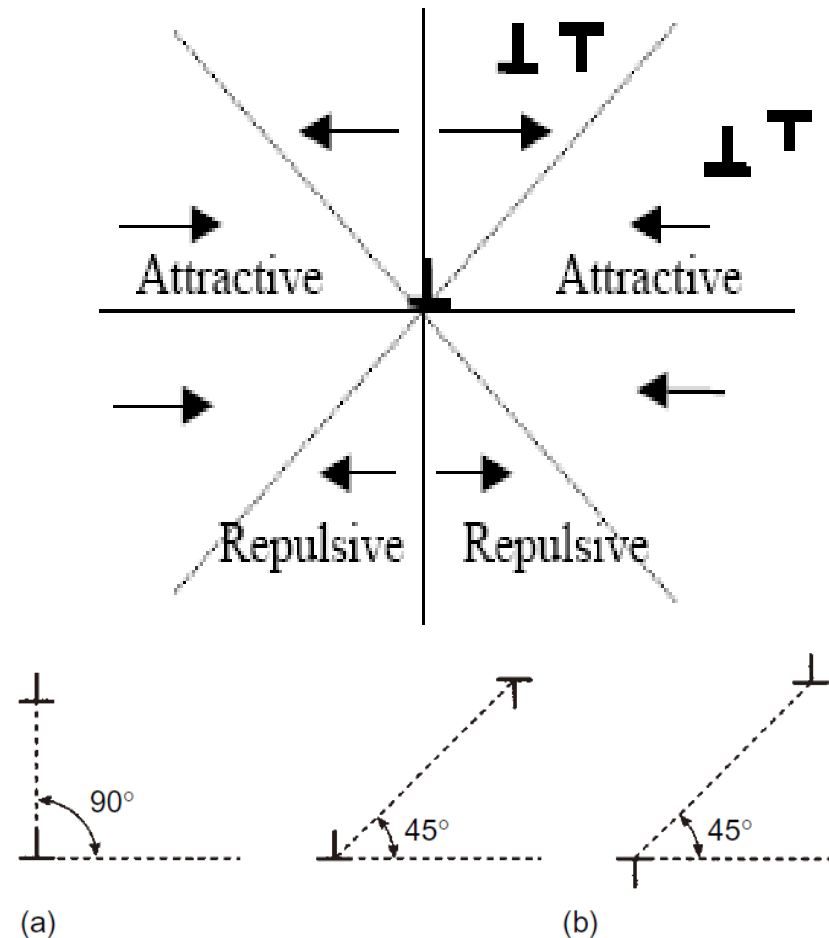
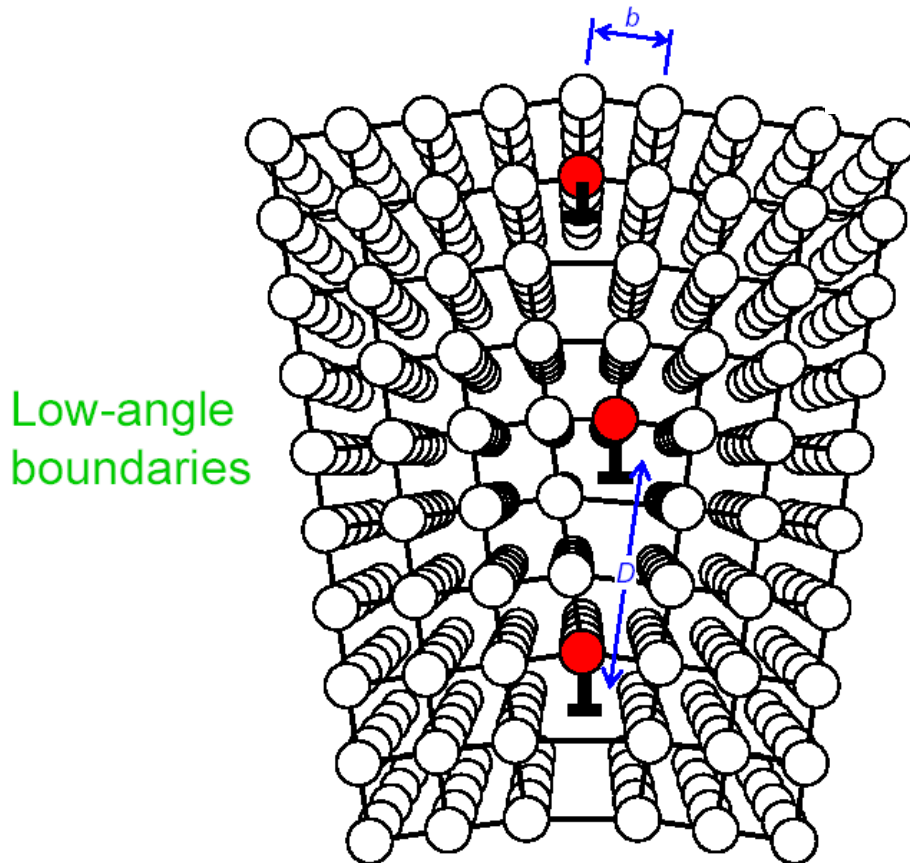


FIGURE 4.15

Stable positions for two edge dislocations of (a) the same sign and (b) opposite sign.

What will happen when the dislocations adopt different configurations?



Screw dislocation :

$$\mathbf{F}_r = \frac{Gbb'}{2\pi r}$$