

Chapter 6

Cell Metabolism



목 차

1

이화작용과 동화작용

2

대사작용 조절

3

대사작용 응용

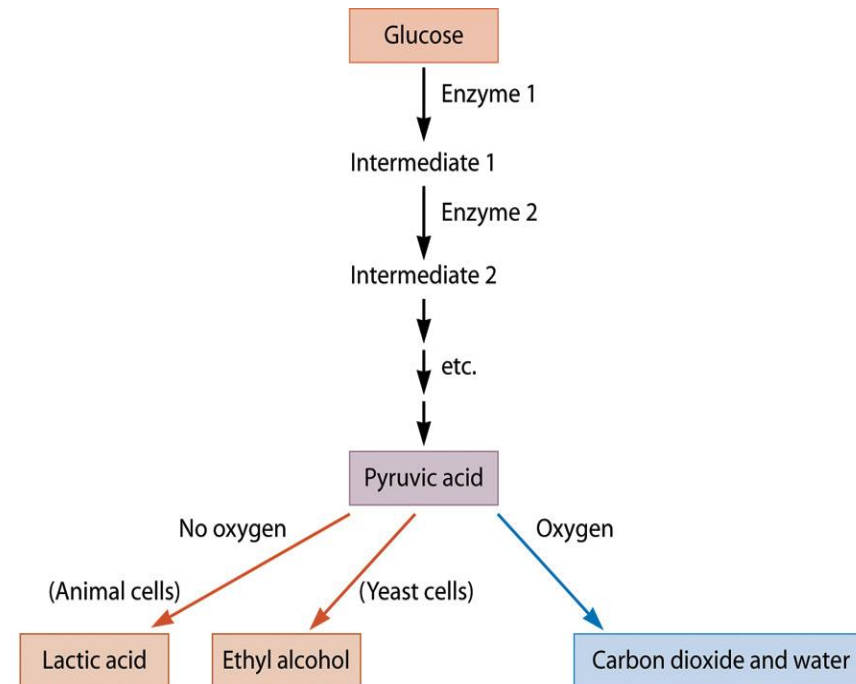
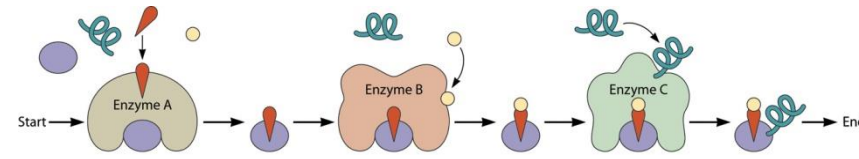
1. 이화작용과 동화작용 (Catabolism and Anabolism)



Metabolic Pathways

■ Metabolic Pathways

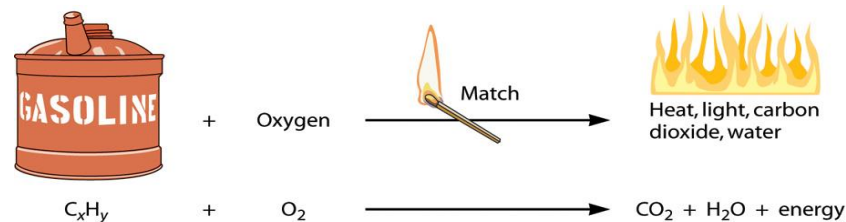
- Break down and manufacture molecules in a sequential set of reactions
- Enzyme reaction: generate products from substrates
- Networks of pathways : branch and converge
- Similar metabolic pathways from bacteria to human



Catabolism and Anabolism

■ Catabolism

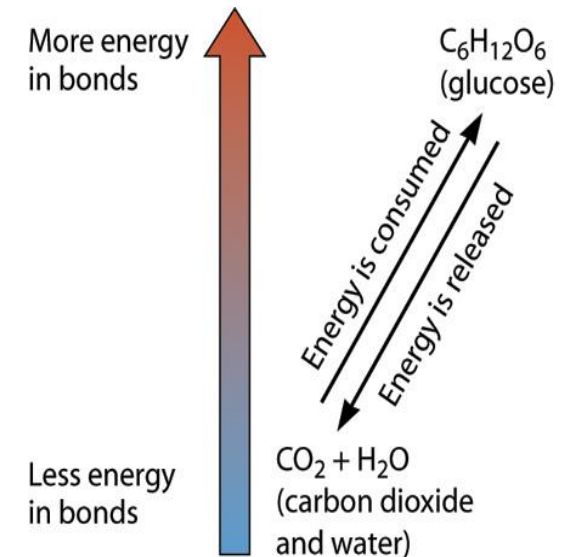
- Breaking down, Energy-yielding metabolism
- Energy release from bond breakage
 - Burning of gasoline
 - high E C-C, C-H bonds to lower E C-O, H-O bonds



- Burning of fat in human body
 - Enzymatic generation of molecules with lower E in bond

■ Anabolism

- Synthesis, Energy-requiring metabolism

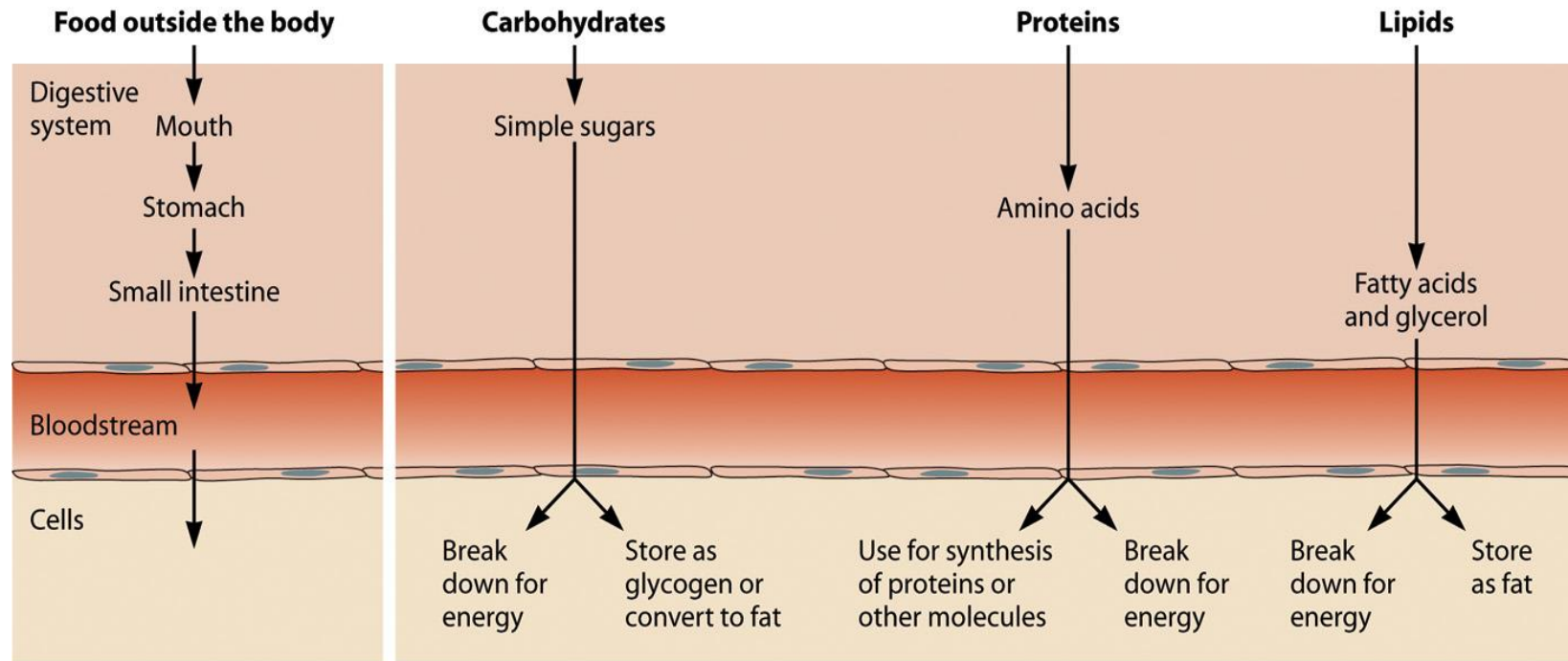


Catabolism of Food in Human Body

- Digestive system

- Breaking down carbohydrates, lipids, and proteins into building blocks
- Sugars
 - Used for quick E
 - If excess, stored as glycogen for short term storage (E for 1 to 2 days)
- Fatty acids
 - Used for quick E
 - If not necessary, stored as fat (fat droplets in fat cells) for long term storage (E for 4-6 weeks)
- Amino acids
 - Can be also used for E (but not the primary fate)
 - Used for protein synthesis and generation of other amino acids

Catabolism in Animals



Catabolism of Glucose

- Glycolysis
 - From bacteria to animals
 - Glucose (C₆) to two pyruvic acid (C₃)
 - No O₂ is required
- Aerobic conditions
 - Conversion of pyruvic acid to CO₂ and acetyl coenzyme A (acetyl-CoA)
 - TCA (Krebs cycle)
 - Acetyl CoA → CO₂ + H₂O + NADH (temporary storage molecule)
- Anaerobic conditions
 - Fermentation
 - Generation of ethanol etc.

BOX 6.1 *The exercise burn and a metabolic branch point*

Have you ever exercised until you felt your muscles burn? The burning is a direct result of a branch point in the metabolic pathway for breaking down glucose and other substrate molecules.

When you exercise, your muscles need a lot of energy. Exercising muscle cells break down lots of glucose—muscles even have their own glycogen stores for just such situations. Breaking down glucose to carbon dioxide and water requires another input: oxygen. When your muscles are working hard, you are breathing harder, and your heart is beating faster to supply your muscles with extra oxygen to power all that glucose catabolism. Sometimes, though, you cannot get enough oxygen to your muscles. You might be putting extraordinary demands on isolated muscles, as when you lift weights, or demanding output from your entire body that exceeds your capacity to supply oxygen via breathing and blood circulation, as when you sprint for a while.

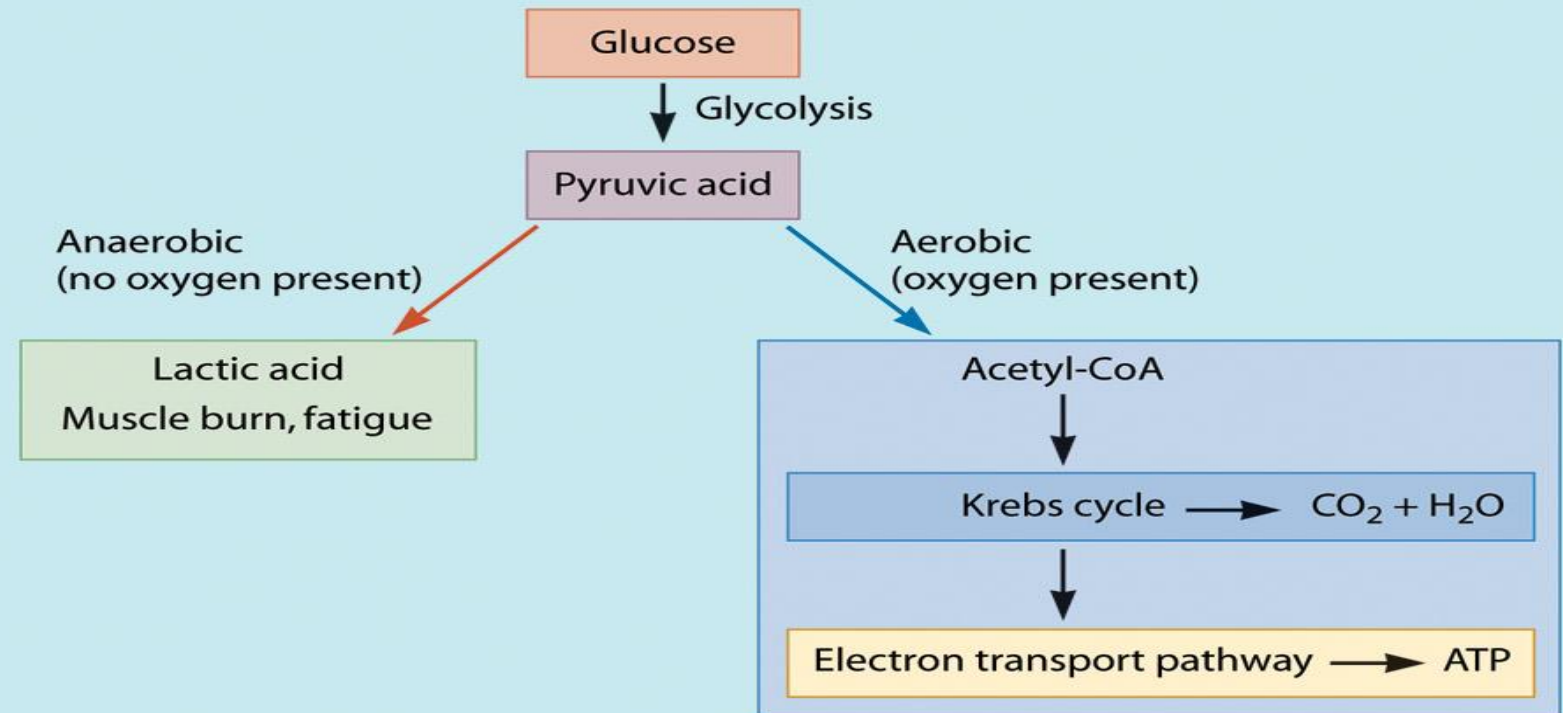
When your muscles can't get enough oxygen, the normal catabolism of glucose to carbon dioxide and water cannot happen. Look at the figure. When oxygen is present, pyruvic acid is converted into acetyl-CoA and on to carbon dioxide and water. This step is actually a

metabolic branch point. If oxygen is not present, your muscle cells do something different with the pyruvic acid. They have another enzyme that converts it into a three-carbon compound called lactic acid. When lactic acid builds up in your muscles, you feel that burning sensation.

The lactic acid burn is a sign that your muscles are working anaerobically (without oxygen). You've probably heard

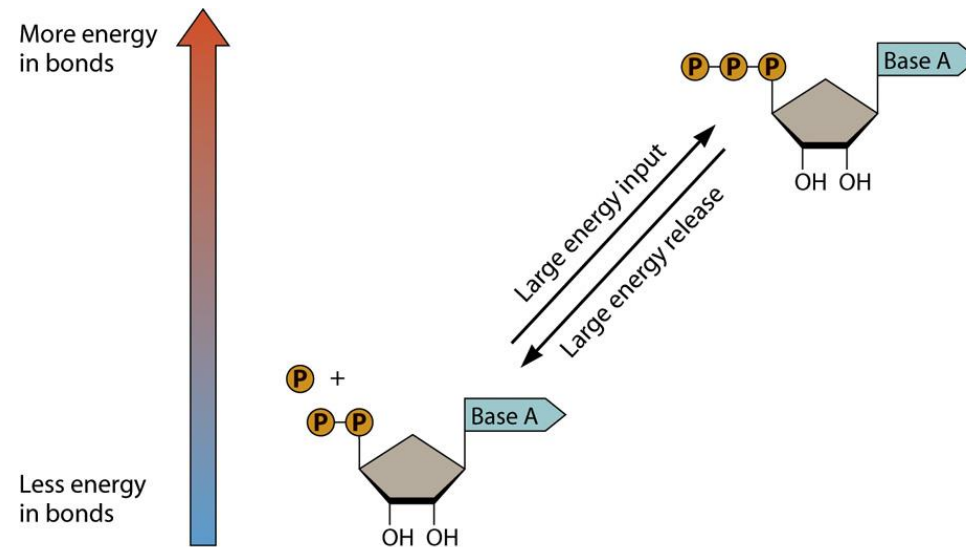
of aerobic exercise. The word aerobic means with oxygen. Aerobic exercise by definition causes you to breathe hard, but your breathing can keep up with your muscles' need for oxygen. That means you can sustain the exercise for longer periods of time. Because you are breathing harder and your heart is beating faster than usual during aerobic exercise, sustained exercise of this kind can strengthen your heart.

Metabolism and muscle burn.

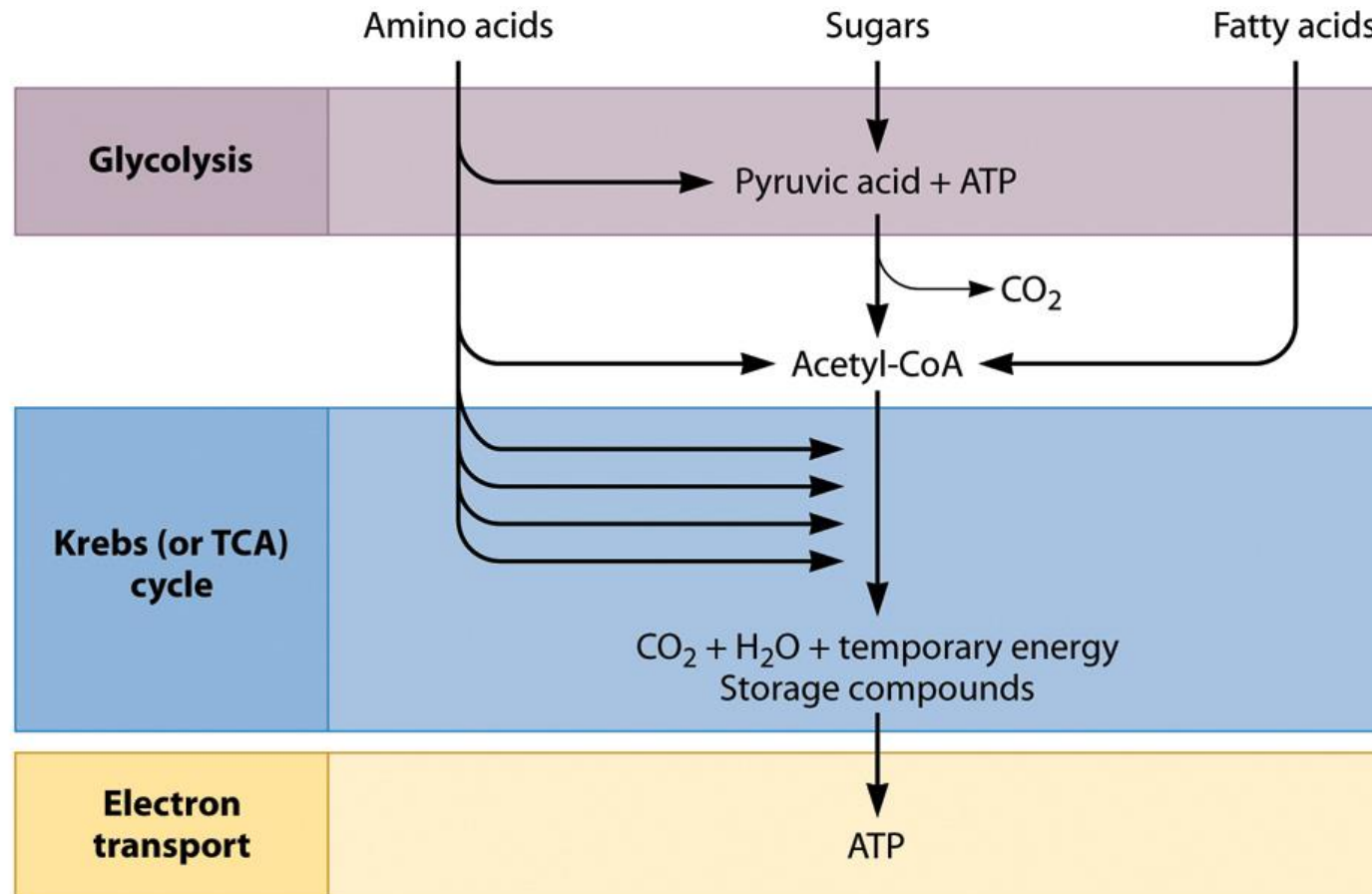


Electron Transport Pathway

- Generation of ATP as E storage molecule
 - ATP : high E phosphodiester bond
- Reduction of O_2 to H_2O
c.f. cyanide: blocking electron transport pathway

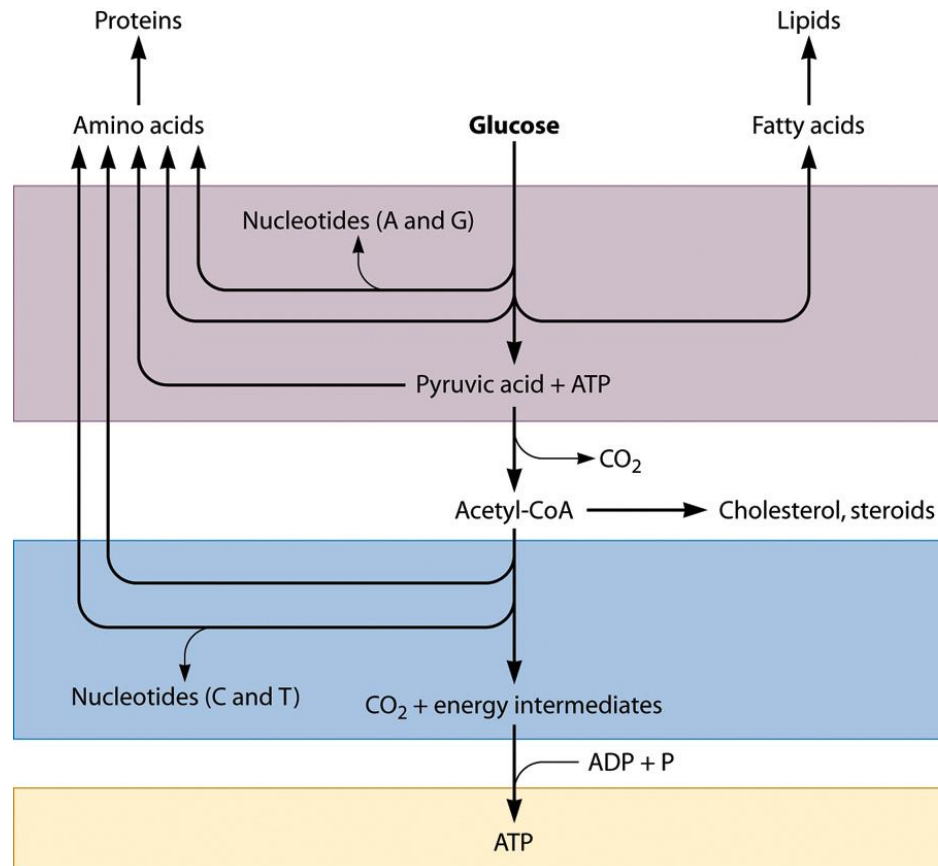


Catabolism of Other Nutrient



Anabolism

- Requirement
 - Energy: ATP
 - Chemical building blocks (intermediates of glucose breakdown)

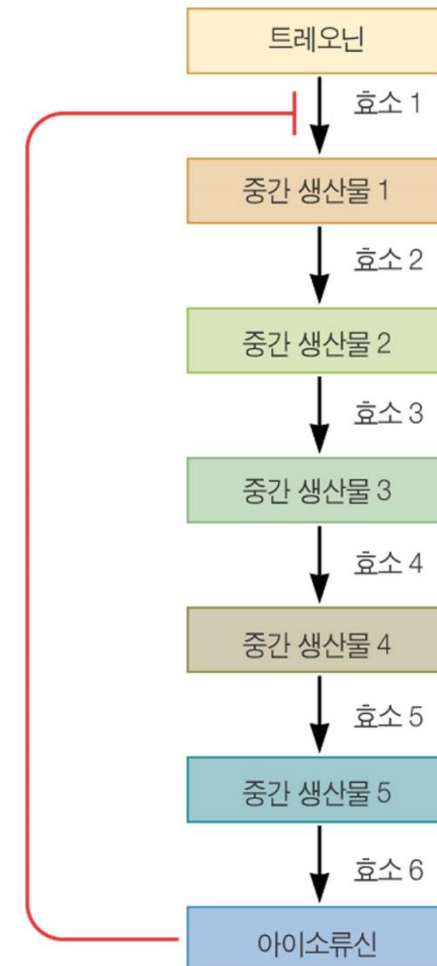
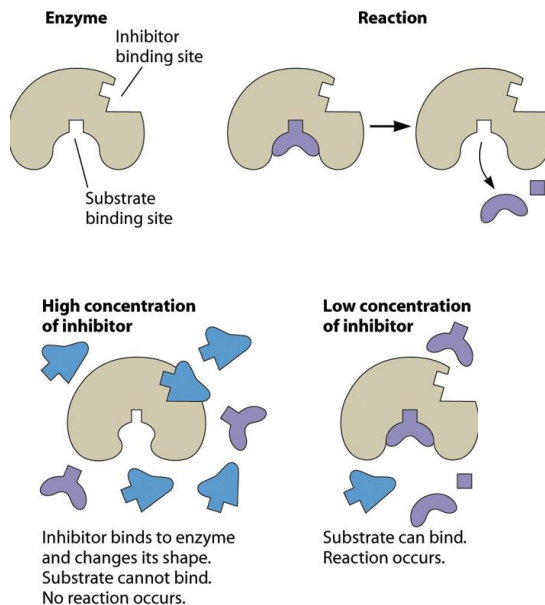


2. 대사작용 조절

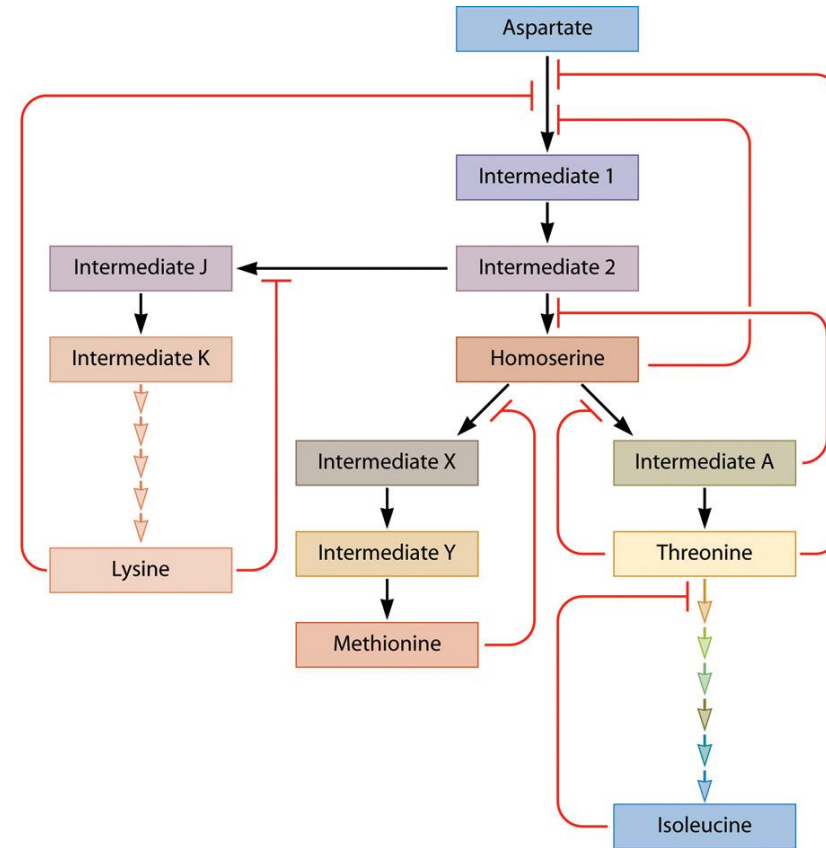
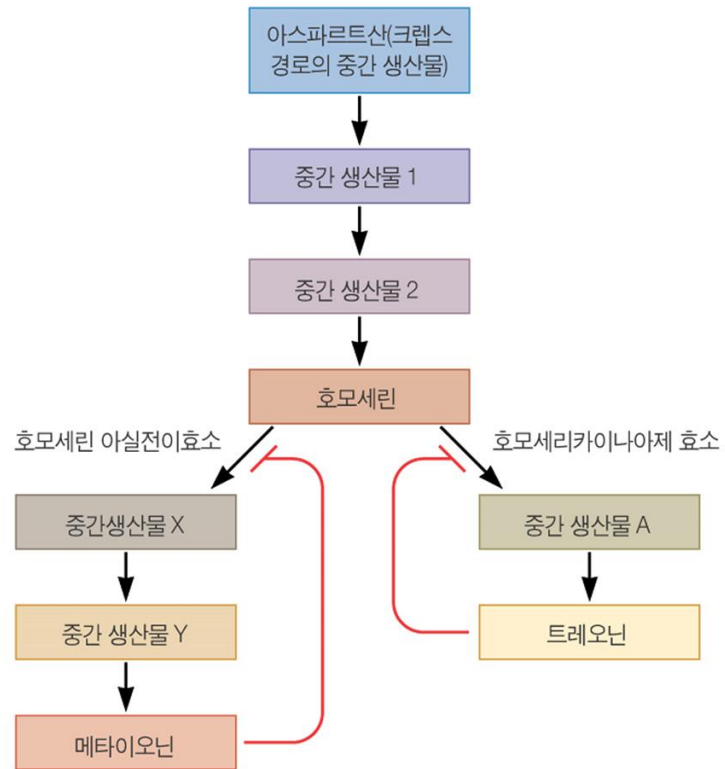


Regulation of Metabolism

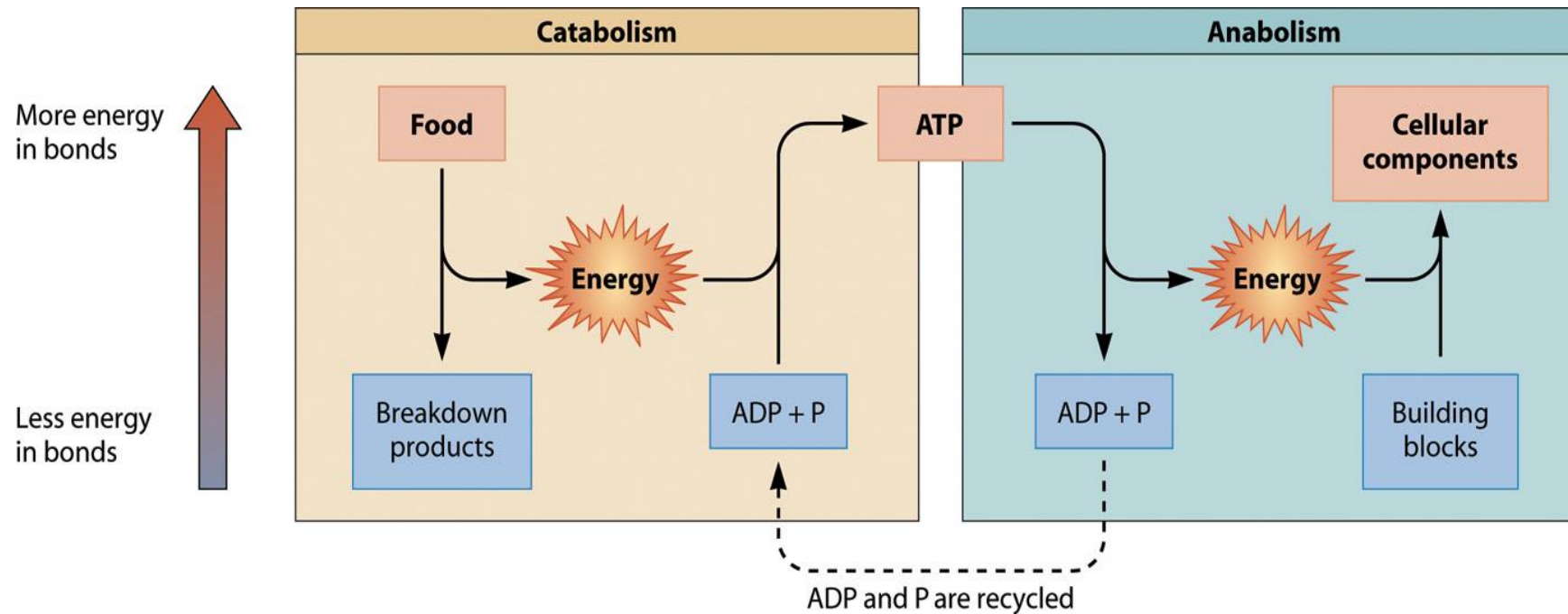
- Feedback Inhibition
 - Inhibition of enzyme activity by end product
e.g. amino acid synthesis



Feedback Inhibition

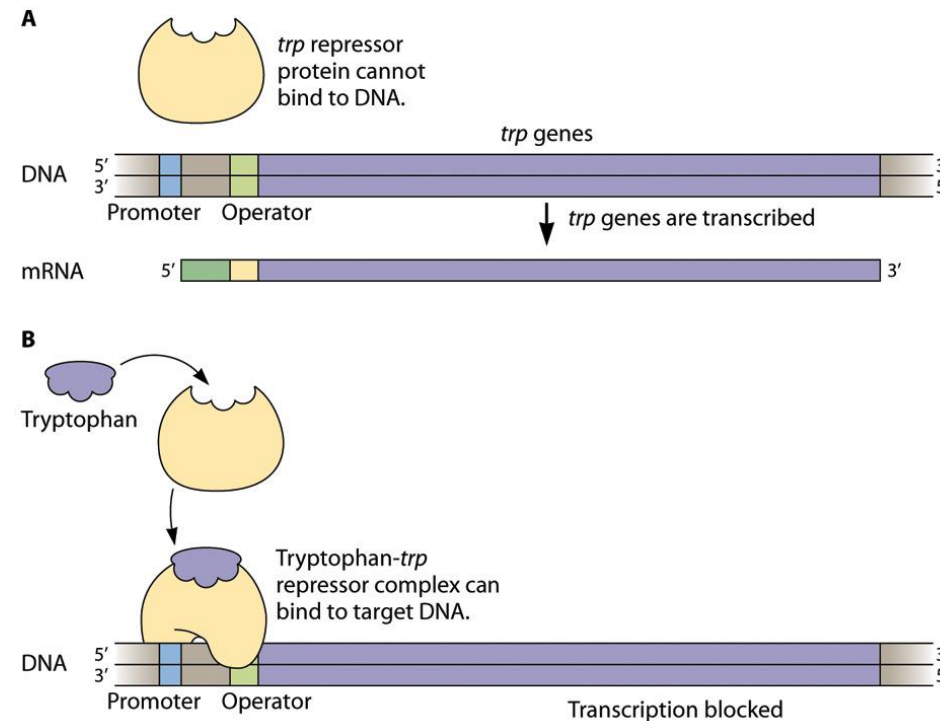


Catabolism & Anabolism

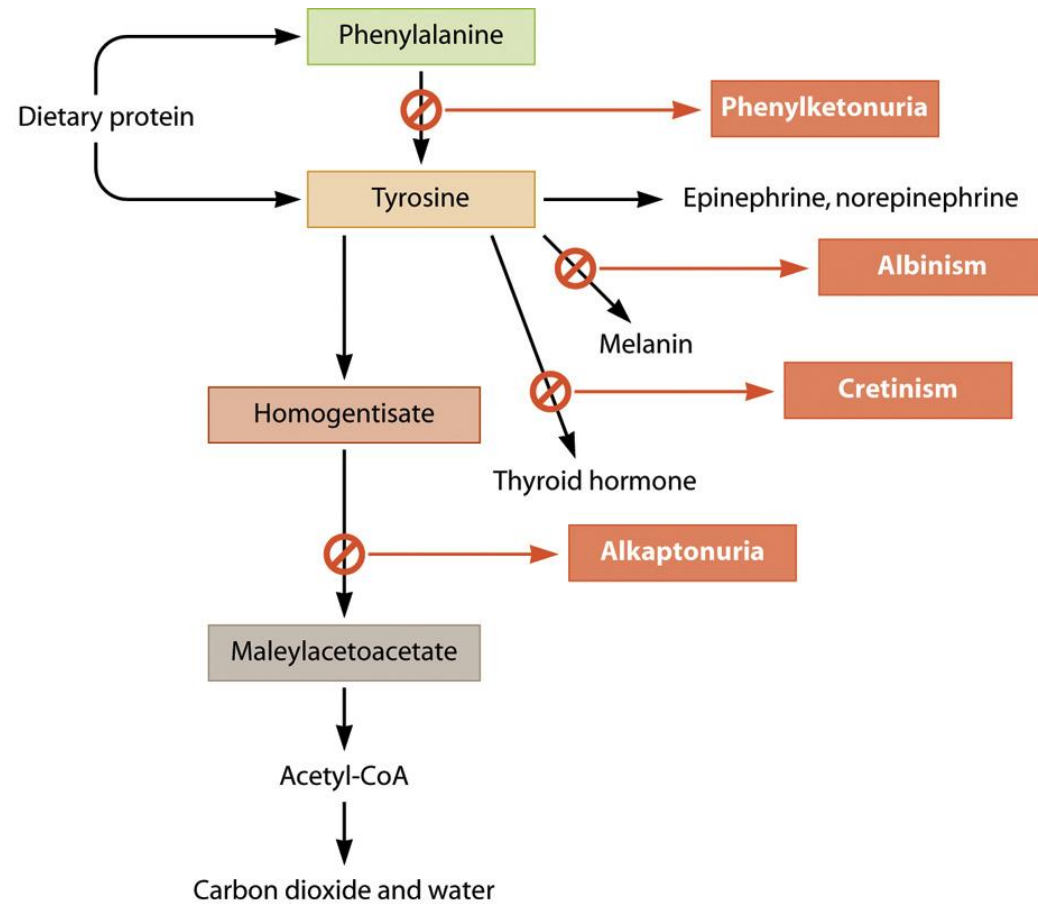


Regulation of Metabolism by Gene Expression

- Trp synthesis in *E. coli*
 - Turn off transcription of Trp genes in the presence of Trp
- Hormonal regulation in higher eukaryotes

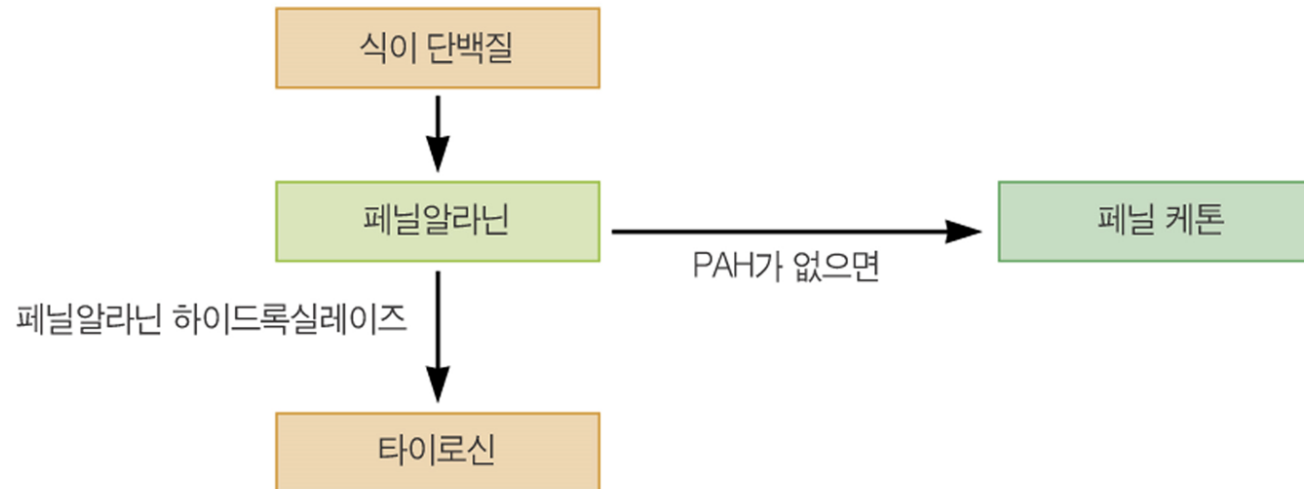


Errors in Metabolism



Phenylketonuria, PKU

- Enzyme defects and amino acid metabolism
 - Phenylketonuria (PKU)
 - Phenylalanine hydroxylase (PAH) defect
 - No conversion of phenylalanine to tyrosine
 - Production of phenylketones
 - Excretion of phenylalanine and phenylketones in the urine
 - Phenylalanine inhibit normal development of nervous system



Phenylketonuria, PKU

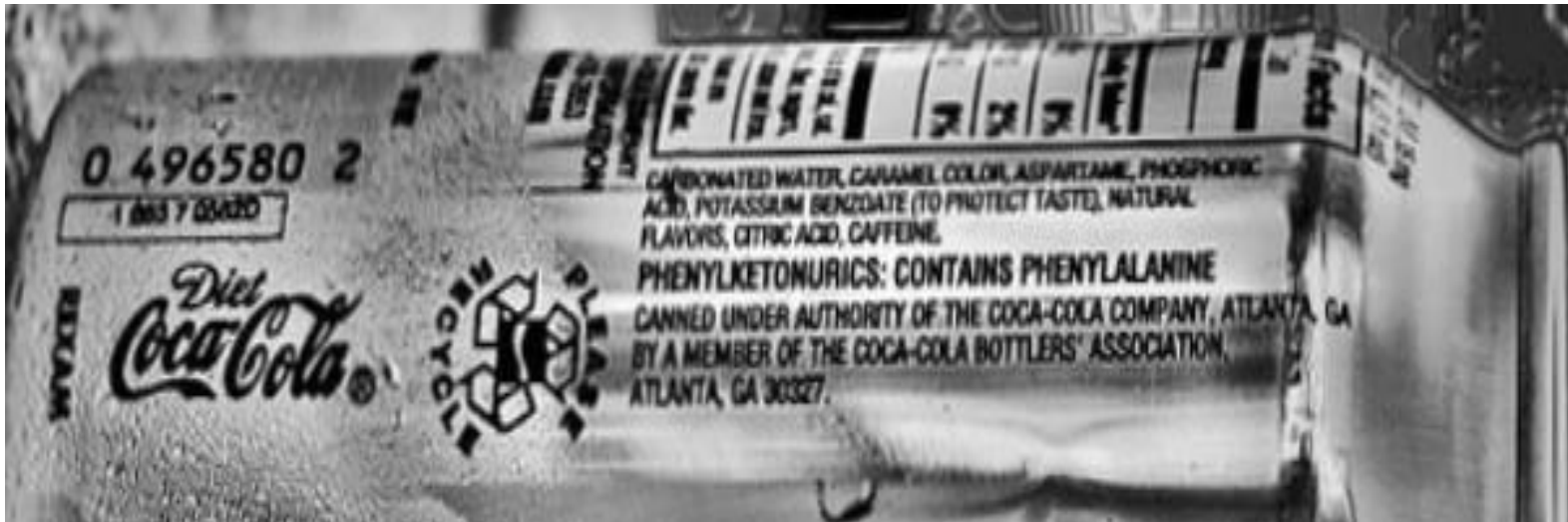
- Treatment with controlled diet

Diet drink

--- warning

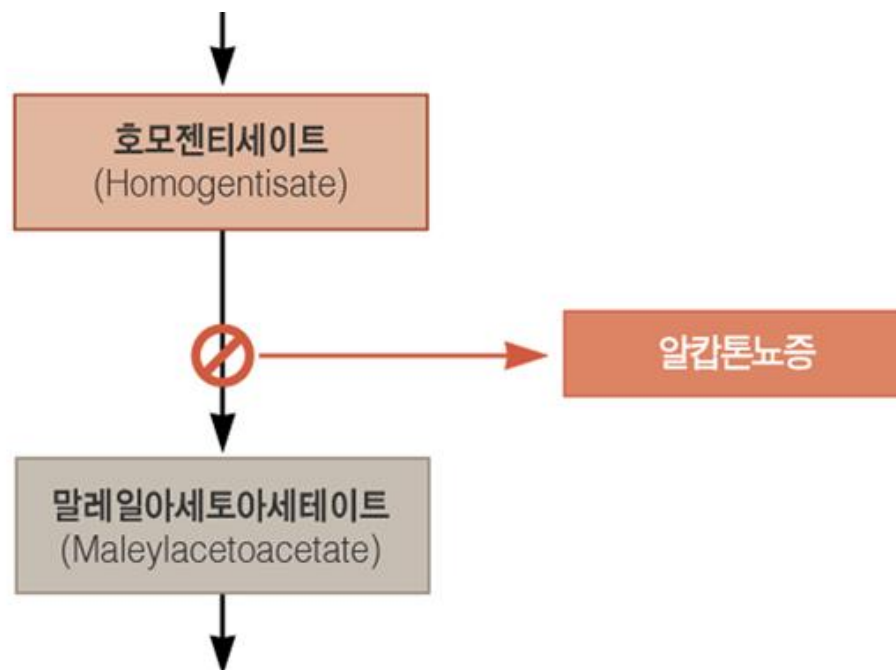
“Phenylketonurics: contains phenylalanine”

--- Aspartame(NutraSweet): Asp-Phe



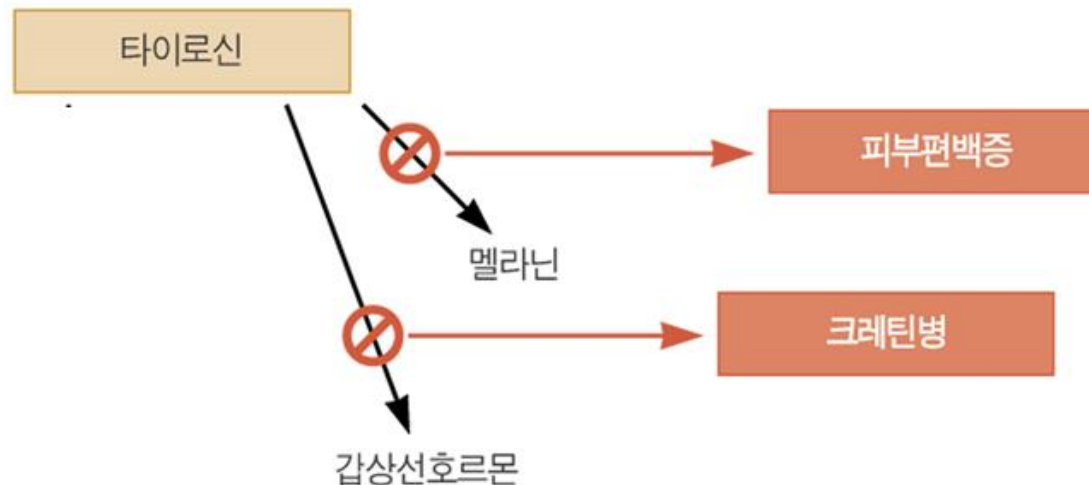
Alkaptonuria

- Defect in enzyme converting homogentisate (HG) to maleylacetoacetate (MAA)
- Oxydation of HG leads to black color → black urine
- No serious effect



Albinism, Cretinism

- Albinism
 - Lacking enzyme converting tyrosine to melanin
- Cretinism
 - Lacking enzyme converting tyrosine to thyroid hormone
 - Defect in growth and maturation of the skeletal and nervous systems



3. 대사작용 응용

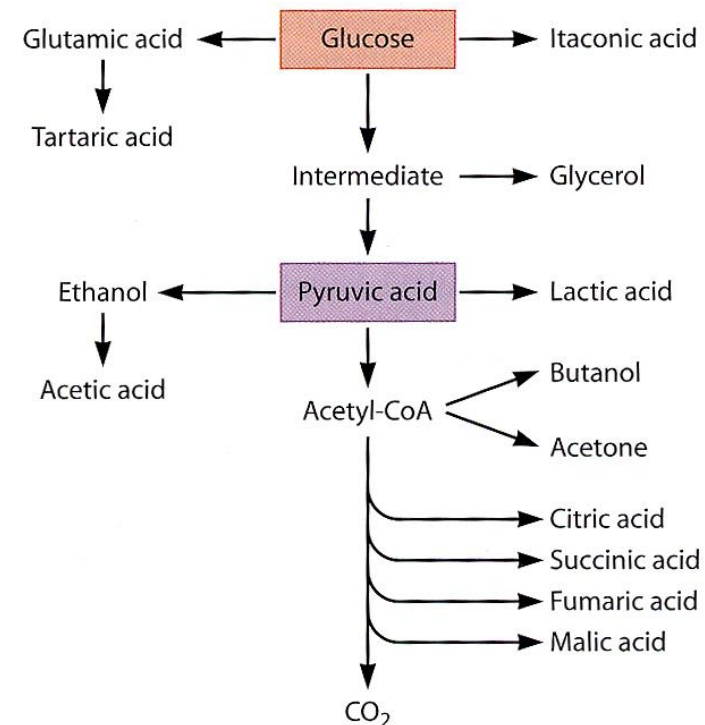


Biotechnology Applications

- Treatment of Metabolic Disorders
- Gaucher's disease (pronounced go-shay)
 - Problems
 - Defect in enzyme breaking down glucocerebroside (lipid) in RBC and WBC
 - Accumulation of enlarged macrophage (Gaucher cell) in spleen, liver, and bone marrow
 - Treatments
 - Enzyme replacement of recombinant enzymes
 - Gene therapy

Using Microbial Metabolism

- Using enzymes for manufacturing (Biocatalyst)
- Biotransformation
 - Whole cell reaction
 - e.g. production of fermented foods (wine, beer, cheese)
 - Reaction with isolated enzymes



Generation of Useful Products from Microbial Metabolism

Table 6.1 Chemicals currently produced by microbial metabolism of glucose and their industrial applications

Chemical	Microbial source	Industrial uses
Ethanol	<i>Saccharomyces</i>	Industrial solvent, fuel, beverages
Acetic acid	<i>Acetobacter</i>	Industrial solvent, rubber, plastics, food acidulant ^a (vinegar)
Citric acid	<i>Aspergillus</i>	Food, pharmaceuticals, cosmetics, detergents
Gluconic acid	<i>Aspergillus</i>	Pharmaceuticals, food, detergent
Glycerol	<i>Saccharomyces</i>	Solvent, cosmetic preparations, soaps, antifreezes
Isopropanol	<i>Clostridium</i>	Industrial solvent, cosmetic preparations, antifreeze, inks
Acetone	<i>Clostridium</i>	Industrial solvent, intermediate in many chemical synthesis reactions
Lactic acid	<i>Lactobacillus, Streptococcus</i>	Food acidulant, fruit juice, soft drinks, dyeing, leather treatment, pharmaceuticals, plastics
Butanol	<i>Clostridium</i>	Industrial solvent, intermediate in many chemical synthesis reactions
Fumaric acid	<i>Rhizopus</i>	Intermediate in synthesis of synthetic resins, dyeing, acidulant, antioxidant
Succinic acid	<i>Rhizopus</i>	Manufacture of lacquers, dyes, and esters for perfumes
Malic acid	<i>Aspergillus</i>	Perfumes
Tartaric acid	<i>Acetobacter</i>	Acidulant, tanning, commercial esters for lacquers, printing
Itaconic acid	<i>Aspergillus</i>	Textiles, paper manufacture, paint

^aAn acidulant is a substance added to food or beverages to lower pH and to impart a tart, acid taste.

Table 6.2 Useful products from microbial metabolic pathways other than glucose metabolism

Type of product	Examples	Applications
Amino acid	Glutamic acid, phenylalanine, aspartic acid, lysine	Nutritional supplements, flavor enhancers, sweeteners
Carbohydrate	Dextran, xanthan gum	Food emulsifiers and thickeners, oil recovery
Vitamin	B ₁₂ , riboflavin, β -carotene	Nutritional supplements, pigments
Metabolic enzyme	Proteases, amylases, lipases	Detergents, sweeteners, brewing, cheese making, textiles, leather softening
Nucleotide	Guanosine, inosine	Flavor enhancers

Application of Microbial Metabolism

- Bioremediation
 - Using microbes to degrade pollutants
 - e.g. Oil-eating microbes



Application of Microbial Metabolism

- Enzymes in manufacturing
 - Invertase: soft-centered chocolate
 - Cellulase: stone-washed jeans
 - Amylase: reduced-calorie beer
 - Lipase, proteinases : laundry detergents

Chapter 7

Cells Maintain Their Internal Environments



목 차

1

세포 막과 물질 전달

2

세포 막 통과

3

체내 신호 전달

4

체내 영양분 이동

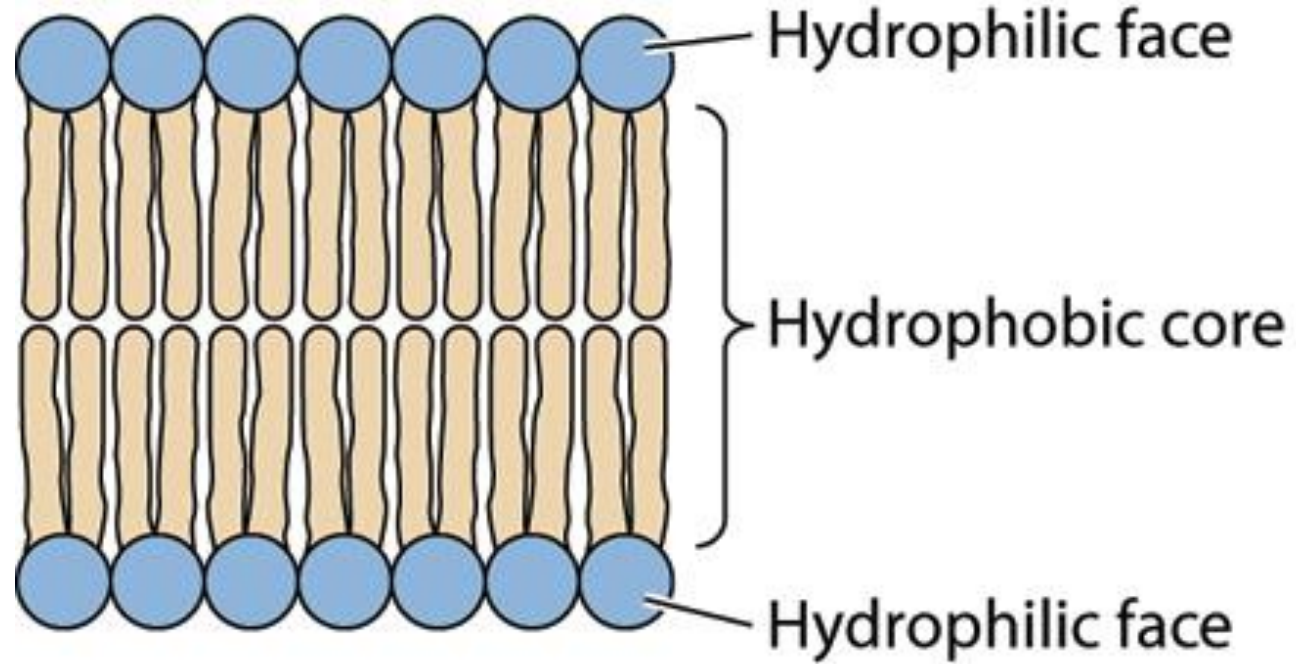
5

물 밸런스

1. Cell membrane and Mass transfer

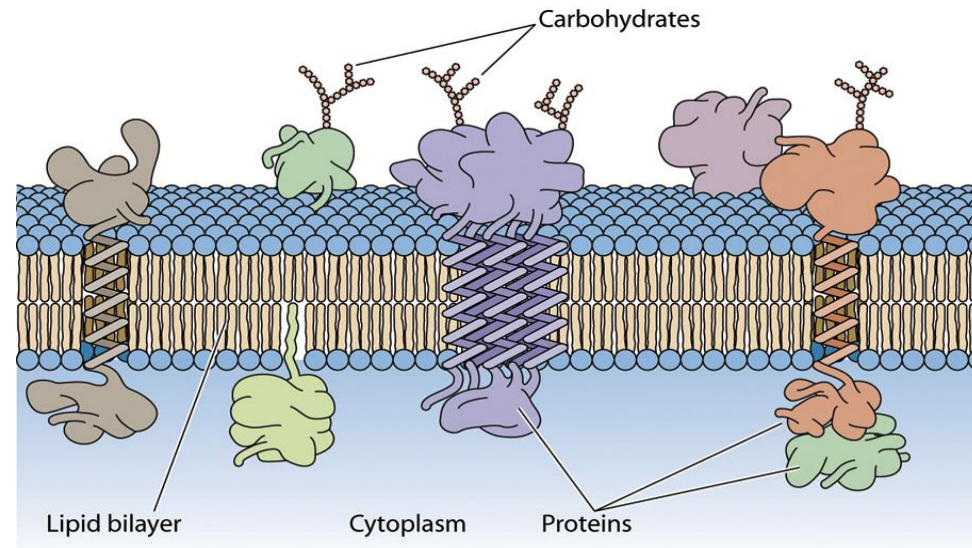


Cell Membrane



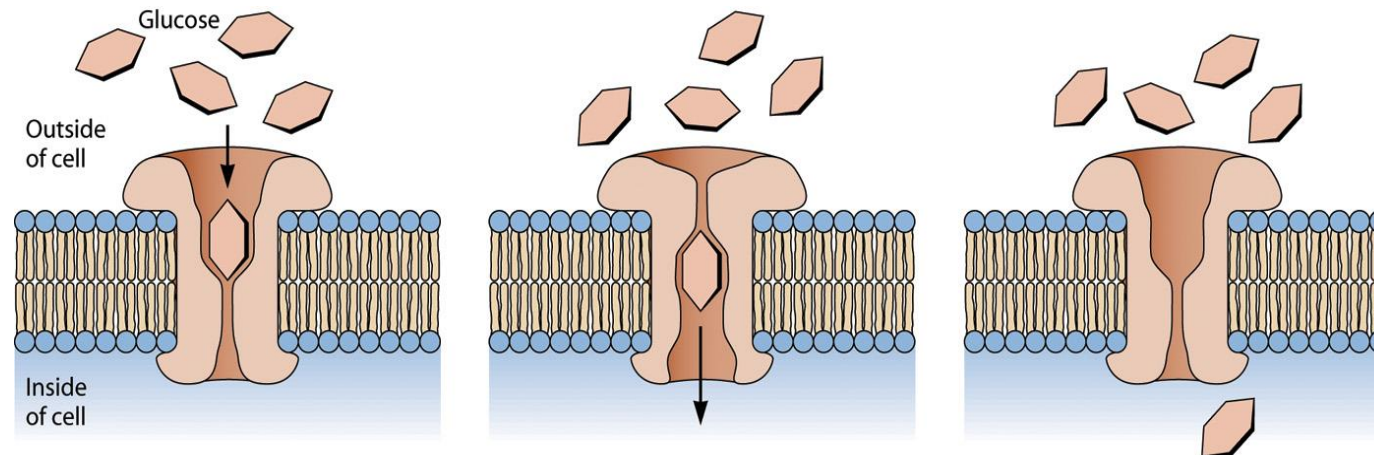
Cell Membrane

- Components of cell membrane
 - Lipid: phospholipids, sterols
 - Embedded proteins : receptor proteins, adhesion proteins, recognition proteins, transport proteins
 - Transmembrane proteins
 - Attachment to cytosolic or exterior face of membrane



Cell Membrane

- Membrane-spanning domains of membrane proteins
 - Hydrophobic surface and hydrophilic core
 - Transport of sugars, amino acids and ions (hydrophilic) through the hydrophilic core of transport proteins

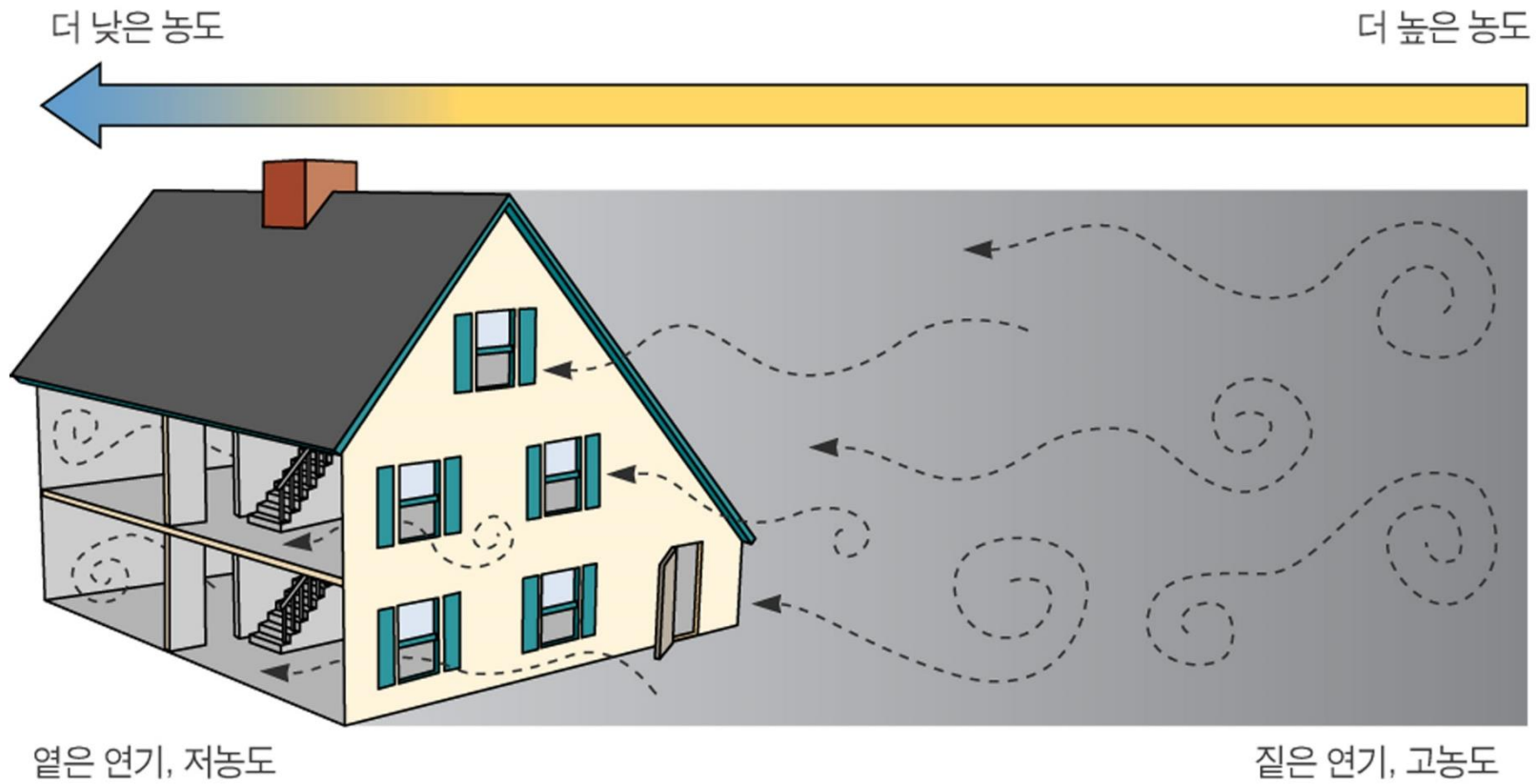


Mass Transfer

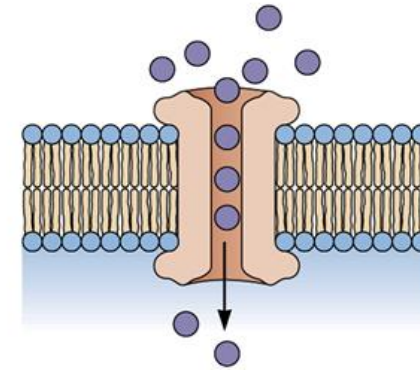
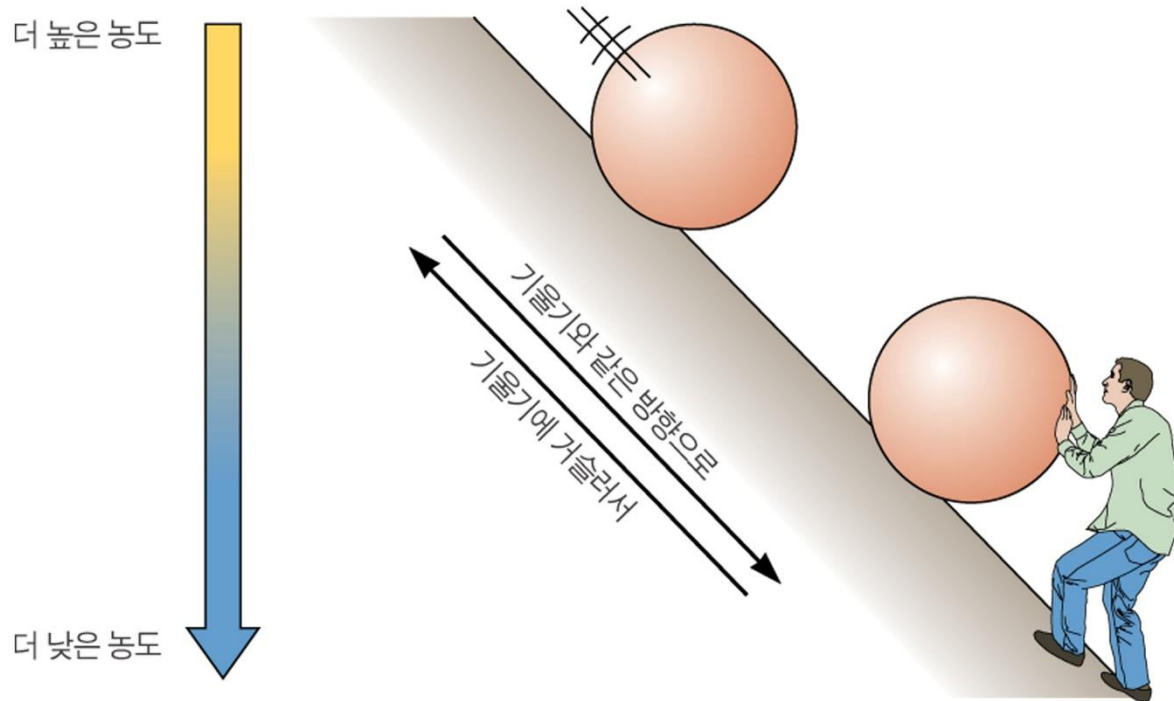
- Diffusion
 - Concentration difference
- Convection
 - Along the fluid flow
- Heat transfer
 - Conduction (temperature difference), convection, radiation



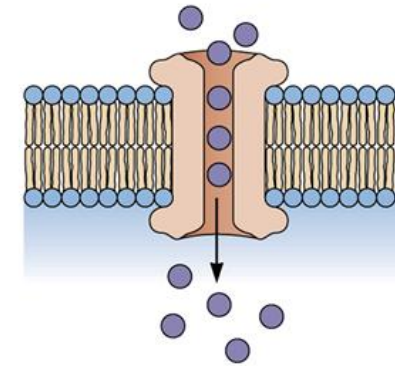
Diffusion



It takes energy to move a substance against the concentration gradient.



Along the concentration gradient



Energy is required.

2. Transport across membrane

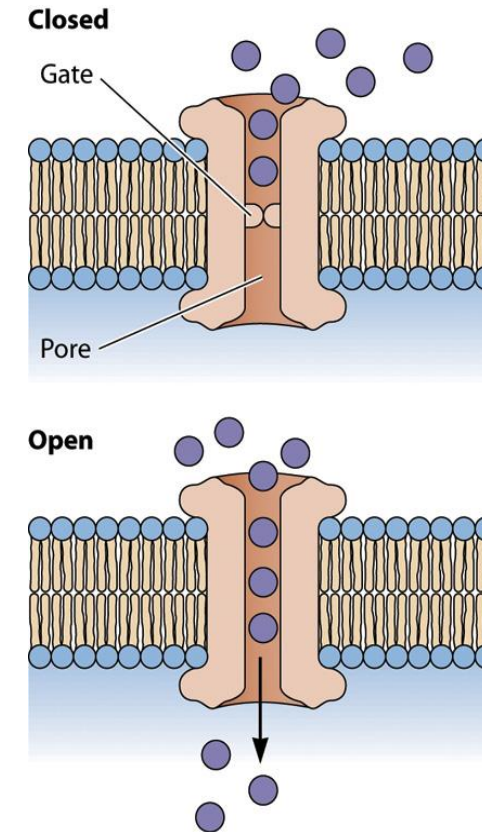


Transport Across Membrane

- Hydrophobic substances and very small molecules can cross the membrane unassisted.
- Diffusion
 - Free diffusion by concentration gradient
 - Hydrophobic substance, nonpolar molecules (O_2 , CO_2), small polar molecules (water, ethanol)

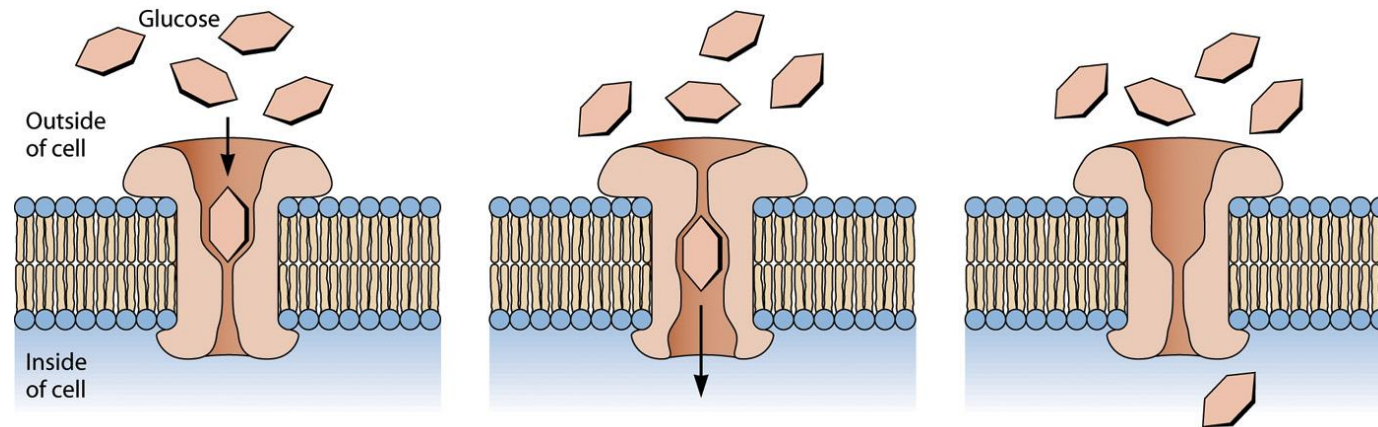
Transport Proteins

- Channel proteins
 - Transport of ions (Na^+ , K^+ , Ca^{2+} , Cl^-)
 - Along their concentration gradients
 - Aquaporin: channel for water (much faster than the diffusion across the membrane)
 - Gated channel



Transport Proteins

- Carrier proteins
 - Escort energy substrates and metabolic building blocks, such as glucose, amino acids, and nucleosides
 - Along the concentration gradient
 - Slower than simple diffusion



Active Transport

■ Pump

- One type of proteins that uses **energy** to move substances
- Transport against the concentration gradient
- Different concentrations between intracellular and extracellular fluids are maintained through pumps.

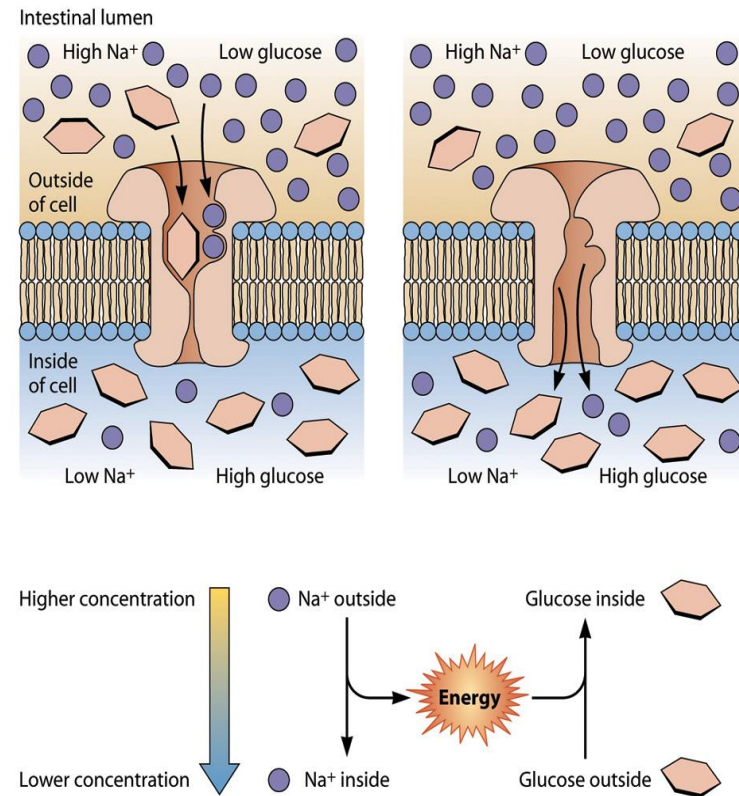
Table 7.1 Approximate concentrations of ions in intracellular and extracellular fluids

Ion ^a	Intracellular concn (mM)	Interstitial concn (mM)
Sodium (Na ⁺)	10	145
Potassium (K ⁺)	150	5
Calcium (Ca ²⁺)	0	3
Chloride (Cl ⁻)	5	110

^aThe most abundant ions in interstitial fluid are sodium and chloride ions, which are the components of table salt.

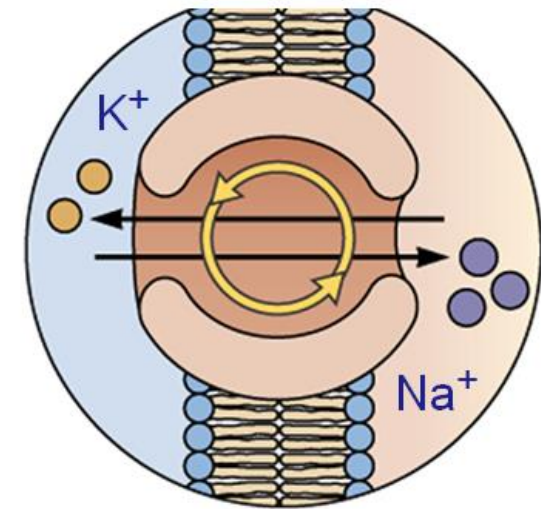
Pump

- Two different energy sources
 - ATP
 - e.g. Pumping Na^+ and K^+ against their gradients using ATP (Na^+/K^+ ATPase)
 - Energy inherent in gradient



Na⁺/K⁺ ATPase

- Pump using ATP
- Na⁺ and K⁺ are pumped against the concentration gradient.
 - Digestion process, nerve impulse
- Some cells uses 25% of total ATP for this pump.



Na⁺/K⁺ ATPase

Table 7.1 Approximate concentrations of ions in intracellular and extracellular fluids

Ion ^a	Intracellular concn (mM)	Interstitial concn (mM)
Sodium (Na ⁺)	10	145
Potassium (K ⁺)	150	5
Calcium (Ca ²⁺)	0	3
Chloride (Cl ⁻)	5	110

^aThe most abundant ions in interstitial fluid are sodium and chloride ions, which are the components of table salt.